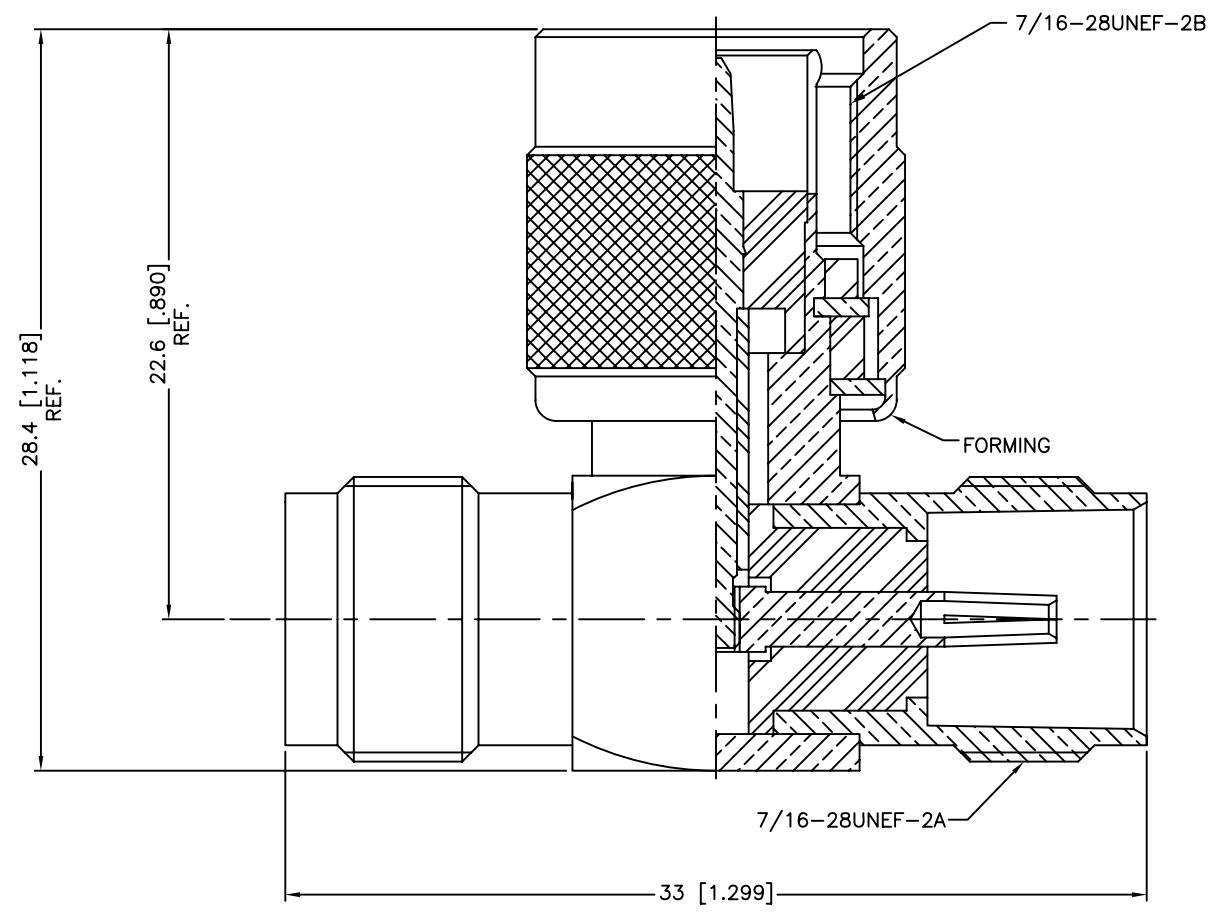


REV.	DATE	ECR NO.	DESCRIPTION
NC	07/15/11	XXXXXX	INITIAL RELEASE



12	RING	DELTRIN	NATURAL	1
11	WASHER	BRASS	NICKEL	1
10	GASKET	RUBBER	RED	1
9	SLEEVE	DELTRIN	NATURAL	1
8	RETAINER RING	BRASS	NICKEL	1
7	INSULATOR	PTFE	NATURAL	1
6	CONTACT PIN	BRASS	GOLD	1
5	CONTACT PIN	PHOSPHOR BRONZE	GOLD	1
4	INSULATOR	PTFE	NATURAL	1
3	BODY	BRASS	NICKEL	1
2	HOUSING	BRASS	NICKEL	1
1	SHELL	BRASS	NICKEL	1
	DESCRIPTION	MATERIAL	FINISH	QTY

UNLESS OTHERWISE SPECIFIED DIMENSIONS ARE IN MILLIMETERS. DIMENSIONS IN [] ARE IN INCHES AND FOR CUSTOMER REFERENCE ONLY.

UNLESS OTHERWISE SPECIFIED TOLERANCES FOR MILLIMETERS ARE:
0.5 - 8mm ± 0.20mm
8 - 30mm ± 0.40mm
30 - 120mm ± 0.50mm

UNLESS OTHERWISE SPECIFIED TOLERANCES FOR INCHES ARE:
.020 - .315 = ± 0.007"
.315 - 1.180 = ± 0.015"
1.180 - 4.724 = ± 0.020"

DO NOT SCALE DRAWING

APPROVALS		DATE
DRAWN	S.LI	07/15/11
CHECKED		
ISSUED		
SHEET	1 OF 1	
CAD FILE	C:/CONNEX/122357.DWG	

Amphenol Connex

PART DESCRIPTION
**TNC "T" ADAPTOR JACK-PLUG-JACK
(FOR 75 OHM)**

PART NO.
122357

DWG. NO.	122357.DWG	REV.	NC	SIZE	A	SCALE	NA
----------	------------	------	----	------	---	-------	----