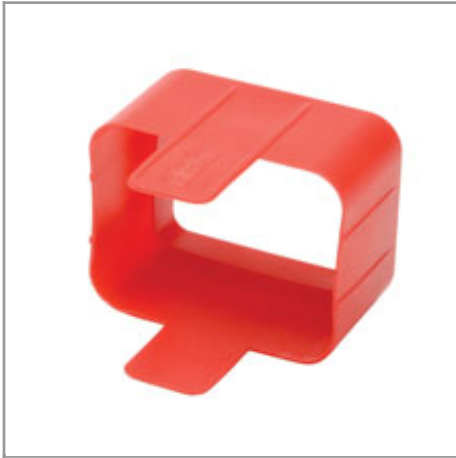


## Plug-lock Inserts keep C20 power cords solidly connected to C19 outlets, RED color, Package of 100

MODEL NUMBER: PLC19RD



### Highlights

- PLC19RD Plug-lock inserts keep C20 power cords connected to C19 outlets
- Prevents accidental disconnection of network hardware during routine rack maintenance
- Universal compatibility, no special cables, outlets or special PDU hardware required
- RED color inserts ship in packages of 100, more colors available

### Package Includes

- 100 RED color C20 plug / C19 outlet compatible Plug-lock inserts

### Description

Tripp Lite PLC19RD RED color Plug-lock inserts prevent accidental disconnection of C20 plug-in power cords from C19 output receptacles. IEC 60320 plug-in electrical cords are frequently loose-fitting and are often subject to accidental disconnection during routine network maintenance. To prevent critical equipment plugs from getting knocked loose, place a Plug-lock insert over any C20 input cord and connect it to any C19 outlet. The insert strengthens the connection of the plug to the outlet, keeping critical equipment plugged-in and running during routine rack access and maintenance. Plug-lock inserts provide a no-clutter alternative to common zip-tie cord retention schemes and a low cost answer to expensive proprietary locking plug and outlet hardware. PLC19RD Plug-lock inserts ship in packages of 100.

### Features

- Tripp Lite PLC19RD Plug-lock inserts prevent accidental disconnection of C20 plug-in power cords from C19 outlets
- RED color PLC19RD inserts ship in packages of 100 pieces
- Corrects loose-fitting IEC60320 power connections that could lead to accidental disconnection of power cables
- Plug-lock inserts strengthen the connection of your C20 plug-in device to any C19 outlet, keeping vital network equipment plugged in and running during routine rack access and maintenance
- Universal compatibility ensures proper fit and enhanced plug retention when used with any standard C20 plug and C19 outlet combination; no proprietary cables or outlets required
- Simple installation, just place a Plug-lock insert over any C20 equipment power cord and plug it in
- Pull tabs enable safe retraction of the insert from powered C19 outlets
- Plug-lock inserts provide a no-clutter alternative to common zip-tie cord retention schemes and prevents reliance on lesser elegant remedies involving duct tape, electrical tape or super glue
- High strength PA66 nylon UL94 material with V2 flame rating

## Specifications



**Tripp Lite**  
1111 W. 35th Street  
Chicago, IL 60609 USA  
Telephone: 773.869.1234  
www.tripplite.com

Accessories Type	Plug-Lock Insert
<b>PHYSICAL</b>	
Shipping Dimensions (hwd / in.)	2.6 x 11.6 x 8.5
Shipping Dimensions (hwd / cm)	6.6 x 29.5 x 21.6
Shipping Weight (lbs.)	.77
Shipping Weight (kg)	.35
Unit Dimensions (hwd / in.)	1.25 x 1.2 x .9
Unit Dimensions (hwd / cm)	3.18 x 3.05 x 2.29
Color	Red
<b>WARRANTY</b>	
Product Warranty Period (Worldwide)	2-year limited warranty

© 2017 Tripp Lite. All rights reserved. All product and company names are trademarks or registered trademarks of their respective holders. Use of them does not imply any affiliation with or endorsement by them. Tripp Lite has a policy of continuous improvement. Specifications are subject to change without notice. Tripp Lite uses primary and third-party agencies to test its products for compliance with standards. See a list of Tripp Lite's testing agencies: <https://www.tripplite.com/products/product-certification-agencies>