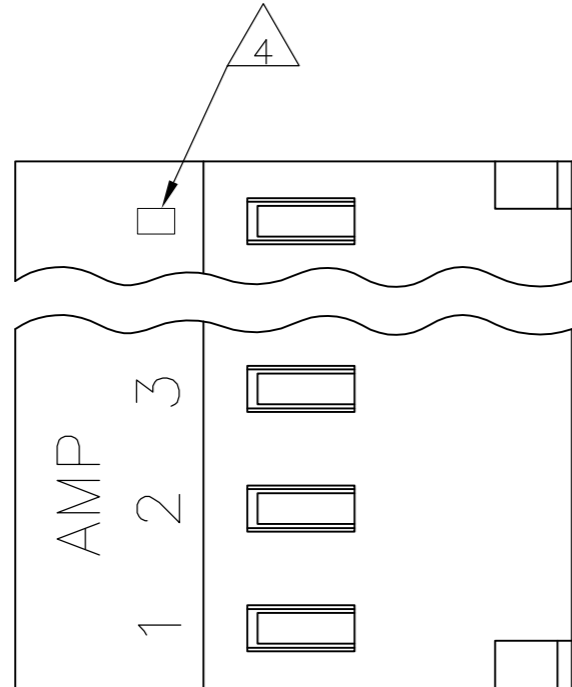
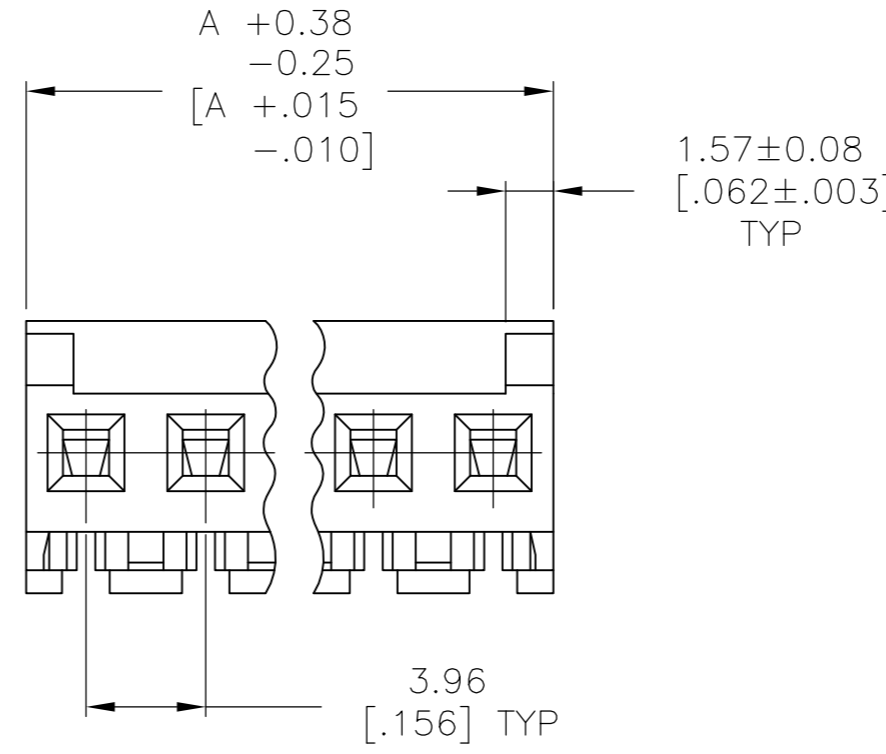
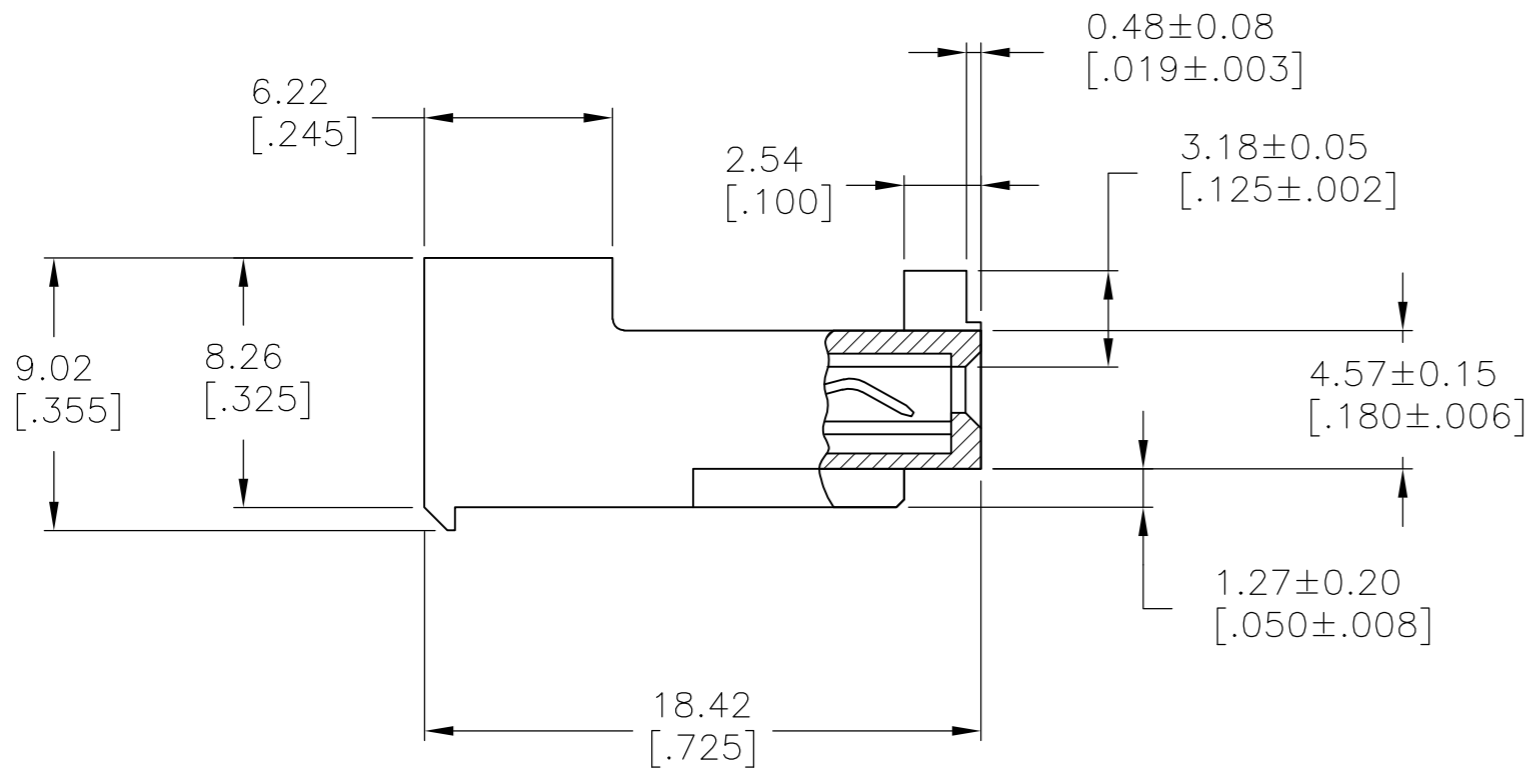


THIS DRAWING IS UNPUBLISHED. RELEASED FOR PUBLICATION
 © COPYRIGHT BY TYCO ELECTRONICS CORPORATION. ALL RIGHTS RESERVED.

LOC	DIST	REVISIONS					
		P	LTR	DESCRIPTION	DATE	DWN	APVD
CM	00		D	ECO-07-012862	12JUN07	KW	DB
			D1	REVISED PER ECO-09-023313	09OCT09	KK	AEG



- 1 MATERIAL: CONNECTOR - NYLON UL94V-2 (WHITE).
CONTACTS - 0.30 [.012] THICK COPPER ALLOY BRIGHT-TIN LEAD 0.00203 [.000080] MIN THICK FOR CONTACTS 644464-2 THRU 1-644464-4 MATTE WHISKER MITIGATED TIN 0.00203 [.000080] MIN THICKNESS OVER NICKEL UNDERPLATE FOR 3-644464-2 THRU 4-644464-4
- 2. CONTACTS ACCEPT 24 AWG WIRE WITH 2.41[.095] MAX INSULATION DIAMETER.
- 3. CONTACTS MUST ACCEPT 1.14±0.03 [.045±.001] POST AND REMAIN LOCKED IN POSITION.
- 4 IDENTIFICATION NUMBER FOR LAST CIRCUIT MAY NOT APPEAR ON ALL ASSEMBLIES.
- 5. DIMENSIONS IN BRACKETS ARE IN INCHES.
- 6. HOUSING FEATURES ARE: CLOSED END WITHOUT LOCKING RAMP AND WITH POLARIZING TAB.
- 7 OBSOLETE PARTS: OBSOLETE CIS STREAMLINING PER D.RENAUD/D.SINISI



TIN	55.47	[2.184]	14	4-644464-4	
TIN	51.51	[2.028]	13	4-644464-3	
TIN	47.55	[1.872]	12	4-644464-2	
TIN	43.59	[1.716]	11	4-644464-1	
TIN	39.62	[1.560]	10	4-644464-0	
TIN	35.66	[1.404]	9	3-644464-9	
TIN	31.70	[1.248]	8	3-644464-8	
TIN	27.74	[1.092]	7	3-644464-7	
TIN	23.77	[.936]	6	3-644464-6	
TIN	19.81	[.780]	5	3-644464-5	
TIN	15.85	[.624]	4	3-644464-4	
TIN	11.89	[.468]	3	3-644464-3	
TIN	7.92	[.312]	2	3-644464-2	
7 SUPERSEDED	TIN-LEAD	55.47	[2.184]	14	-1-644464-4-
7 SUPERSEDED	TIN-LEAD	51.51	[2.028]	13	-1-644464-3-
	TIN-LEAD	47.55	[1.872]	12	1-644464-2
7 SUPERSEDED	TIN-LEAD	43.59	[1.716]	11	-1-644464-1-
7 SUPERSEDED	TIN-LEAD	39.62	[1.560]	10	-1-644464-0-
7 SUPERSEDED	TIN-LEAD	35.66	[1.404]	9	-644464-9-
7 SUPERSEDED	TIN-LEAD	31.70	[1.248]	8	-644464-8-
7 SUPERSEDED	TIN-LEAD	27.74	[1.092]	7	-644464-7-
7 SUPERSEDED	TIN-LEAD	23.77	[.936]	6	-644464-6-
	TIN-LEAD	19.81	[.780]	5	644464-5
7 SUPERSEDED	TIN-LEAD	15.85	[.624]	4	-644464-4-
7 SUPERSEDED	TIN-LEAD	11.89	[.468]	3	-644464-3-
	TIN-LEAD	7.92	[.312]	2	644464-2
	FINISH	DIM A	NO OF CIRCUITS	PART NO	

THIS DRAWING IS A CONTROLLED DOCUMENT.

DWN B. LEWIS 12 FEB 91
 CHK R. SWING 12 FEB 91
 APVD D. CLARK 20 FEB 91

Tyco Electronics Tyco Electronics Corporation
 Harrisburg, Pa 17105-3608

DIMENSIONS: mm [INCHES] TOLERANCES UNLESS OTHERWISE SPECIFIED:
 0 PLC ± -
 1 PLC ± -
 2 PLC ± -
 3 PLC ± 0.13 [.005]
 4 PLC ± -
 ANGLES ± -

PRODUCT SPEC 108-1051
 APPLICATION SPEC 114-1020

MATERIAL 1 FINISH 1

NAME MTA-156 CONNECTOR ASSEMBLY, 24 AWG, STANDARD

SIZE A2 CAGE CODE 00779 DRAWING NO C=644464 RESTRICTED TO -

WEIGHT - SCALE 4:1 SHEET 1 OF 1 REV D1

CUSTOMER DRAWING

