

## DETAILS

<b>Product Number</b>	CA11173_TINA2-O
<b>Family</b>	Tina
<b>Type</b>	Assembly
<b>Color</b>	black
<b>Diameter</b>	16,1 mm
<b>Height</b>	11 mm
<b>Style</b>	round
<b>Optic Material</b>	PMMA
<b>Holder Material</b>	
<b>Fastening</b>	tape
<b>Status</b>	production ready
<b>ROHS Compliant</b>	Yes
<b>Date Updated</b>	20/11/2012



## OPTICAL PROPERTIES

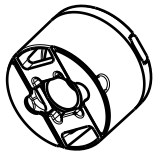
LED	Viewing Angle	Light Beam	Efficiency	cd/lm	Connector
MX-6	34+21 deg	Oval	85 %	2.500	-
NS6x83	34+22 deg	Oval	87 %	2.700	-
NS3x83	36+22 deg	Oval	83 %	2.190	-

D

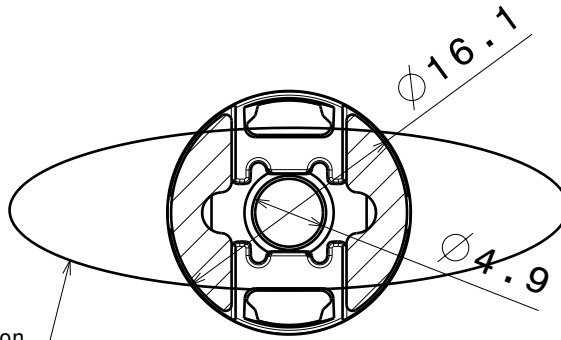
C

B

A



Isometric view  
Scale: 1:1



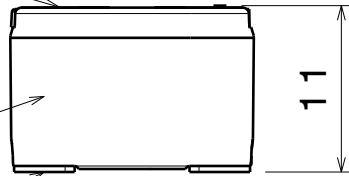
Bottom view

Oval beam direction  
90dg version has opposite direction

Lens

Holder

Tape



Front view

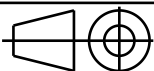
MATERIALS  
Lens: PMMA  
Holder: PC  
Tape: PU Foam

Tolerances if not otherwise shown  
According to DIN ISO 2768-1  
Linear measures:  
Up to 30mm class M, otherwise class C.  
According to DIN ISO 2768-2  
Form and position: class L  
Control for SPC marked dimensions.

LEDiL

Ledil Oy  
Salorankatu 10  
FIN 24240 SALO  
Finland

THIRD ANGLE PROJECTION:



DRAWING TITLE

Datasheet Tina2-oval assy

20121120

ah

SIZE

PART NUMBER

-

-

SCALE

1:1

WEIGHT

-

SHEET

-

D

A

4

4

3

3

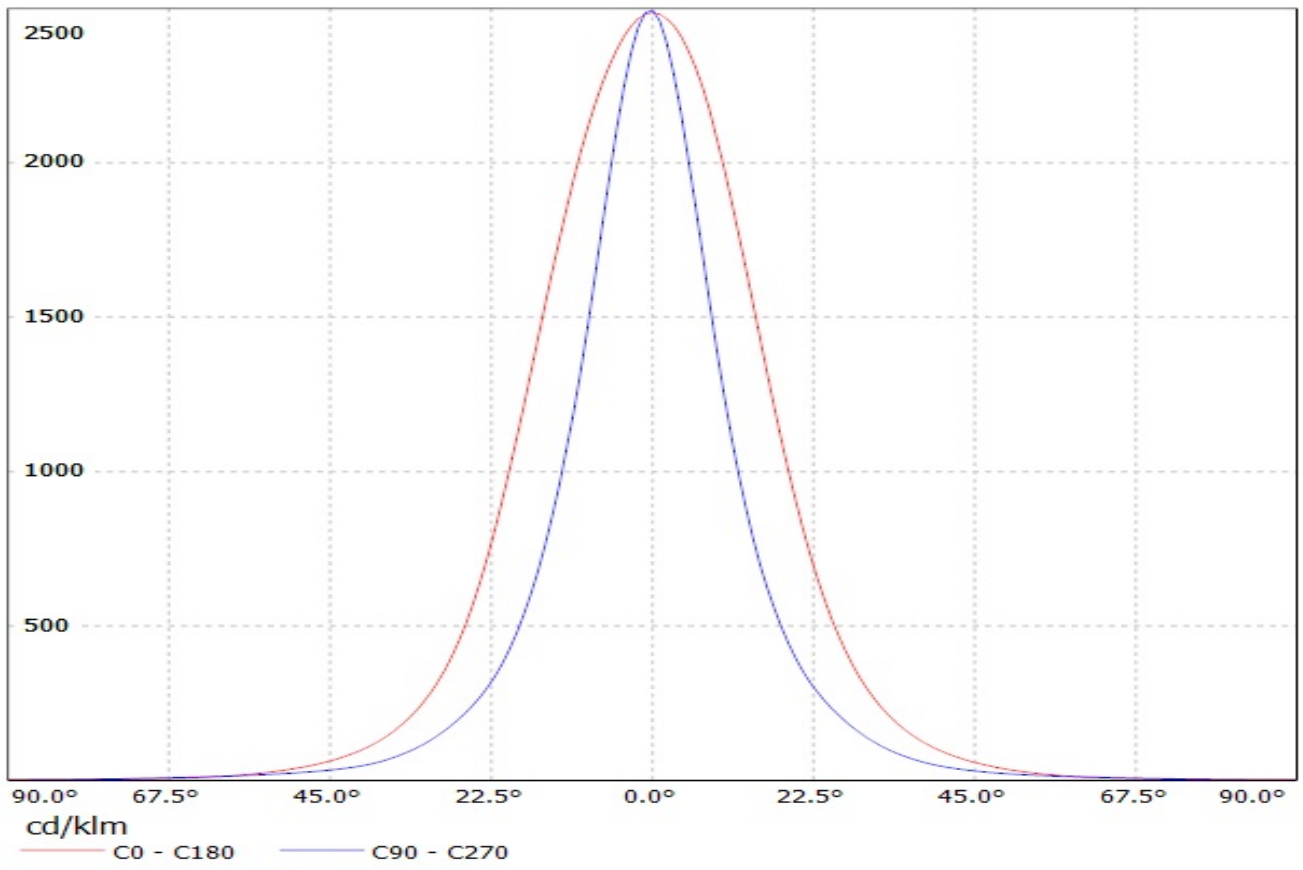
2

2

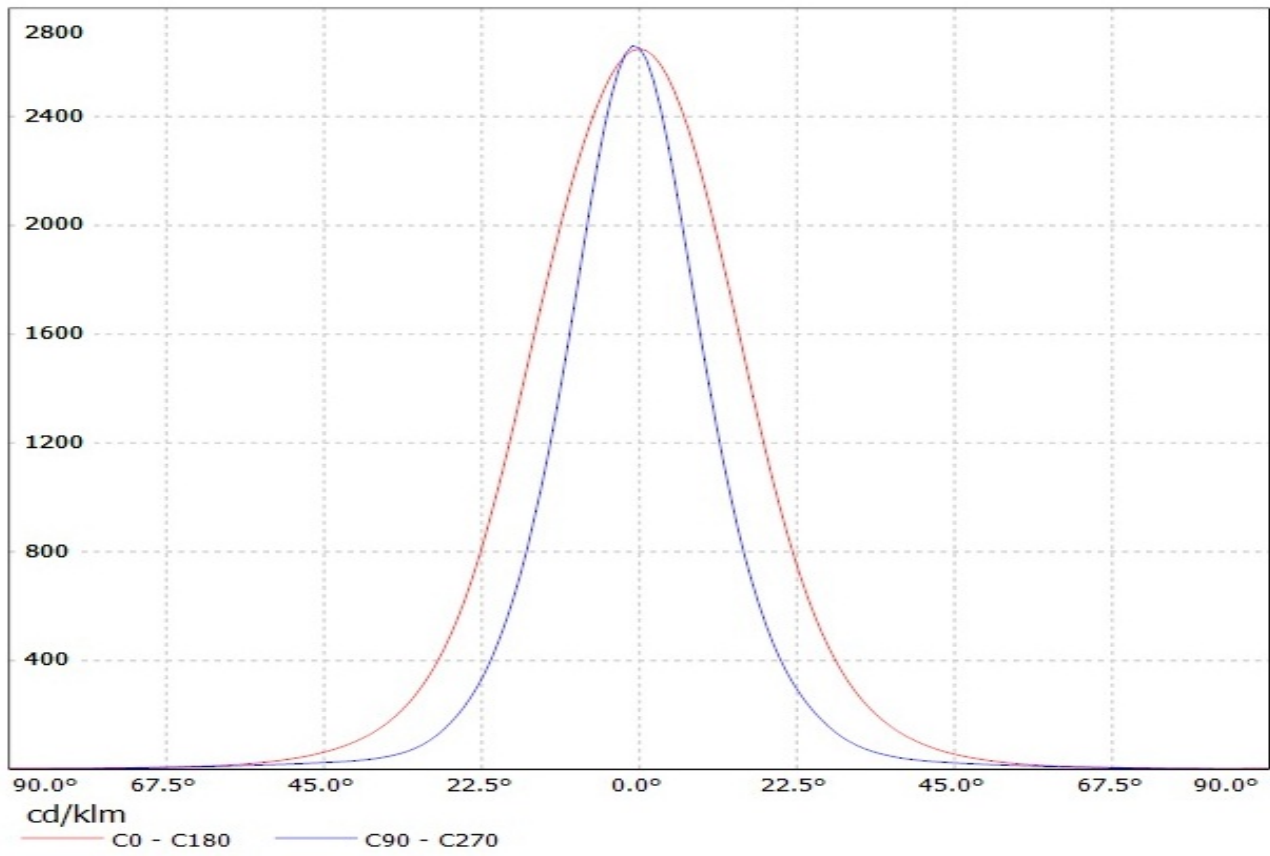
1

1

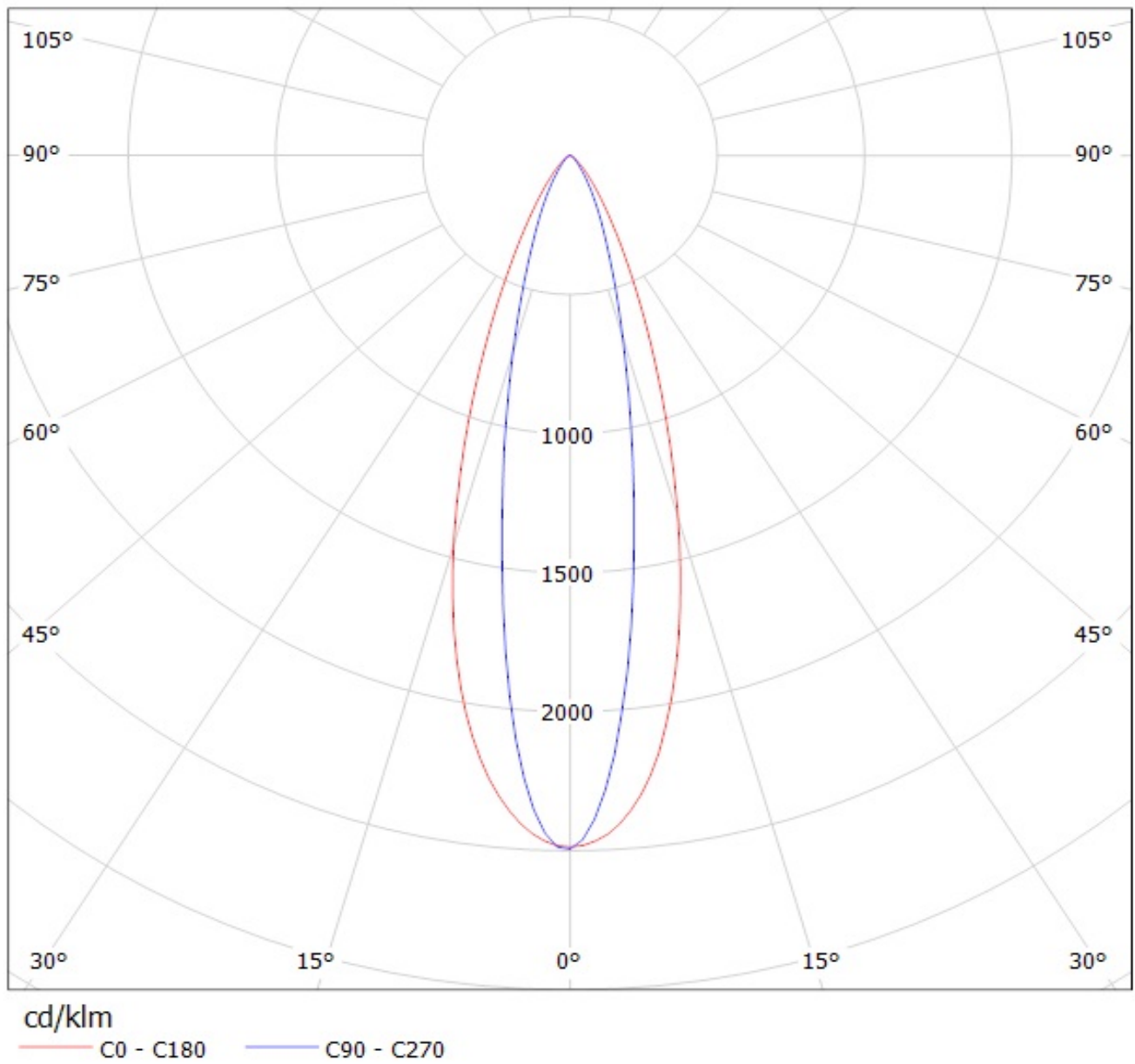
Luminaire: LEDIL OY CP12684\_TINA2-O / CA11173\_TINA2-O (Cree MX-6) Efficiency=85%  
Lamps: 1 x Cree MX-6 (67lm @ 250mA)



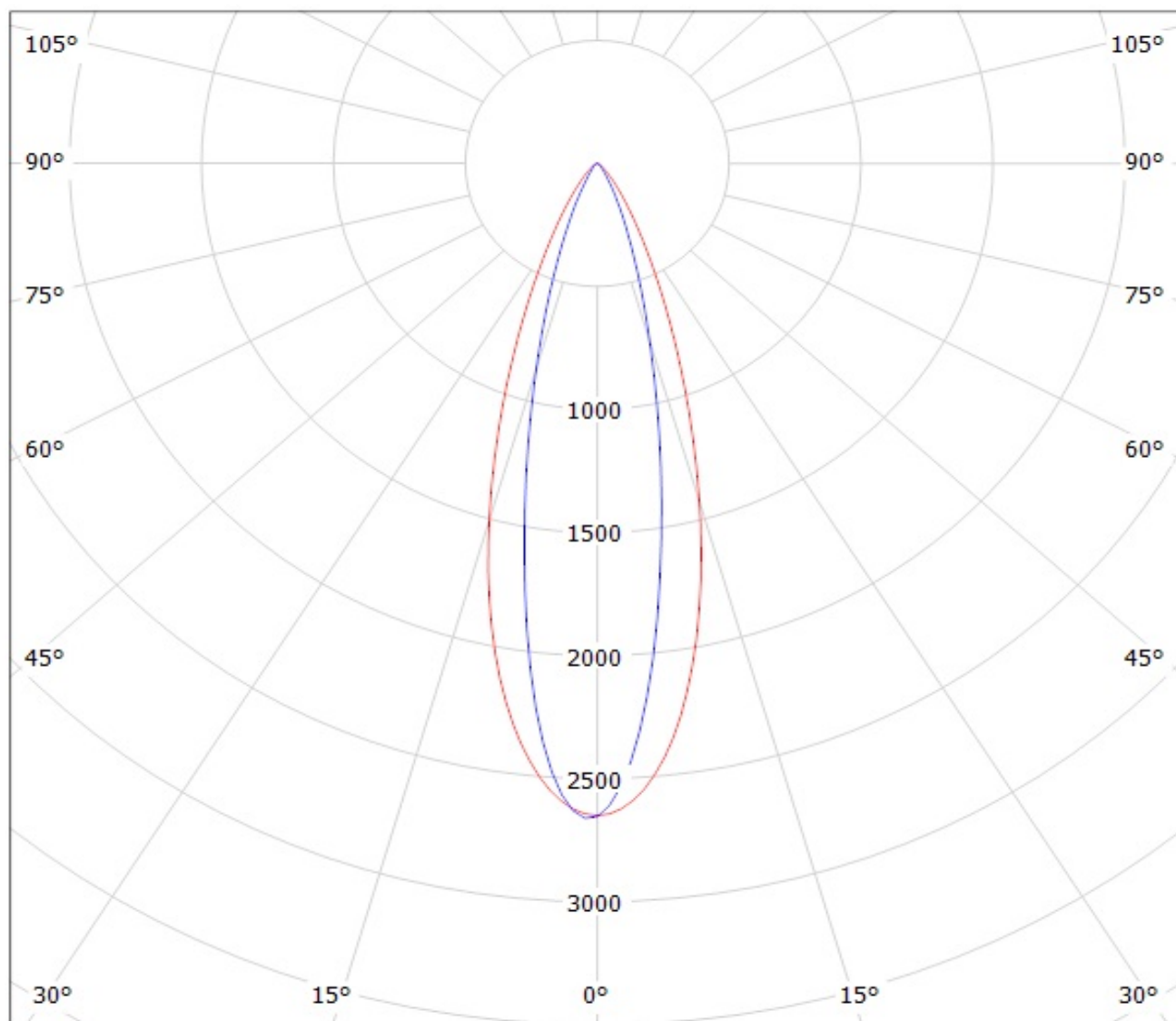
Luminaire: LEDIL OY CP12684\_TINA2-O / CA11173\_TINA2-O (Nichia NS6x83) Efficiency=87%  
Lamps: 1 x Nichia NS6x83 (76lm @ 250mA)



Luminaire: LEDIL OY CP12684\_TINA2-O / CA11173\_TINA2-O (Cree MX-6) Efficiency=85%  
Lamps: 1 x Cree MX-6 (67lm @ 250mA)



Luminaire: LEDIL OY CP12684\_TINA2-O / CA11173\_TINA2-O (Nichia NS6x83) Efficiency=87%  
Lamps: 1 x Nichia NS6x83 (76lm @ 250mA)



cd/klm

— C0 - C180

— C90 - C270

**NOTE: The typical divergence will be changed by different color, chip size and chip position tolerance. The typical total divergence is the full angle measured where the luminous intensity is half of the peak value.**