

DETAILS

Product Number	CA14367_FLARE-MAXI-D-TAPE
Family	Flare
Type	Assembly
Color	clear
Diameter	33,9 + 33,3 mm
Height	16,9 mm
Style	rectang
Optic Material	PMMA
Holder Material	
Fastening	pin, tape
Status	production ready
ROHS Compliant	Yes
Date Updated	9/05/2014



OPTICAL PROPERTIES

LED	Viewing Angle	Light Beam	Efficiency	cd/lm	Connector
XM-L	110+15 deg	REC-class	94 %	1.700	-
XP-G	115+15 deg	REC-class	94 %	1.900	-
MK-R	100+23 deg	REC-class	92 %	1.200	-
XP-G2	106+14 deg	REC-class	94 %	2.000	-
XM-L2	101+17 deg	REC-class	94 %	1.900	-
XT-E	117+14 deg	REC-class	94 %	1.900	-
XP-L	119+16 deg	REC-class	94 %	1.500	-
XHP50	109+20 deg	REC-class	92 %	1.300	-
XHP70	107+27 deg	REC-class	94 %	1.000	-
XHP35 HD	sim: 92+15	REC-class	sim: 92 %	sim: 1.900	-
XHP35 HI	sim: 86+11	REC-class	sim: 93 %	sim: 2.600	-
XP-L2	107+16 deg	REC-class	92 %	1.500	-
LUXEON T	102+13 deg	REC-class	92 %	1.800	-
LUXEON A	104+12 deg	REC-class	94 %	2.100	-
LUXEON H50-2	sim: 10+65	REC-class	sim: 92 %	sim: 3.300	-
LUXEON M/MX	102+25 deg	REC-class	94 %	1.400	-
LUXEON Rebel ES	104+13 deg	REC-class	94 %	2.000	-
LUXEON TX	103+13 deg	REC-class	93 %	2.060	-
NCSxx19B	107+13 deg	REC-class	94 %	2.100	-
NS9x383	110+16 deg	REC-class	93 %	1.500	-
NVSxx19B/NVSxx19C	116+13 deg	REC-class	94 %	1.700	-
Oslon Square PC	104+12 deg	REC-class	94 %	2.000	-
Oslon Square EC	99+14 deg	REC-class	94 %	2.000	-
Duris S10	92+21 deg	REC-class	93 %	1.400	-
Duris P10	sim: 88+17	REC-class	sim: 93 %	sim: 1.760	-



PRODUCT DATASHEET

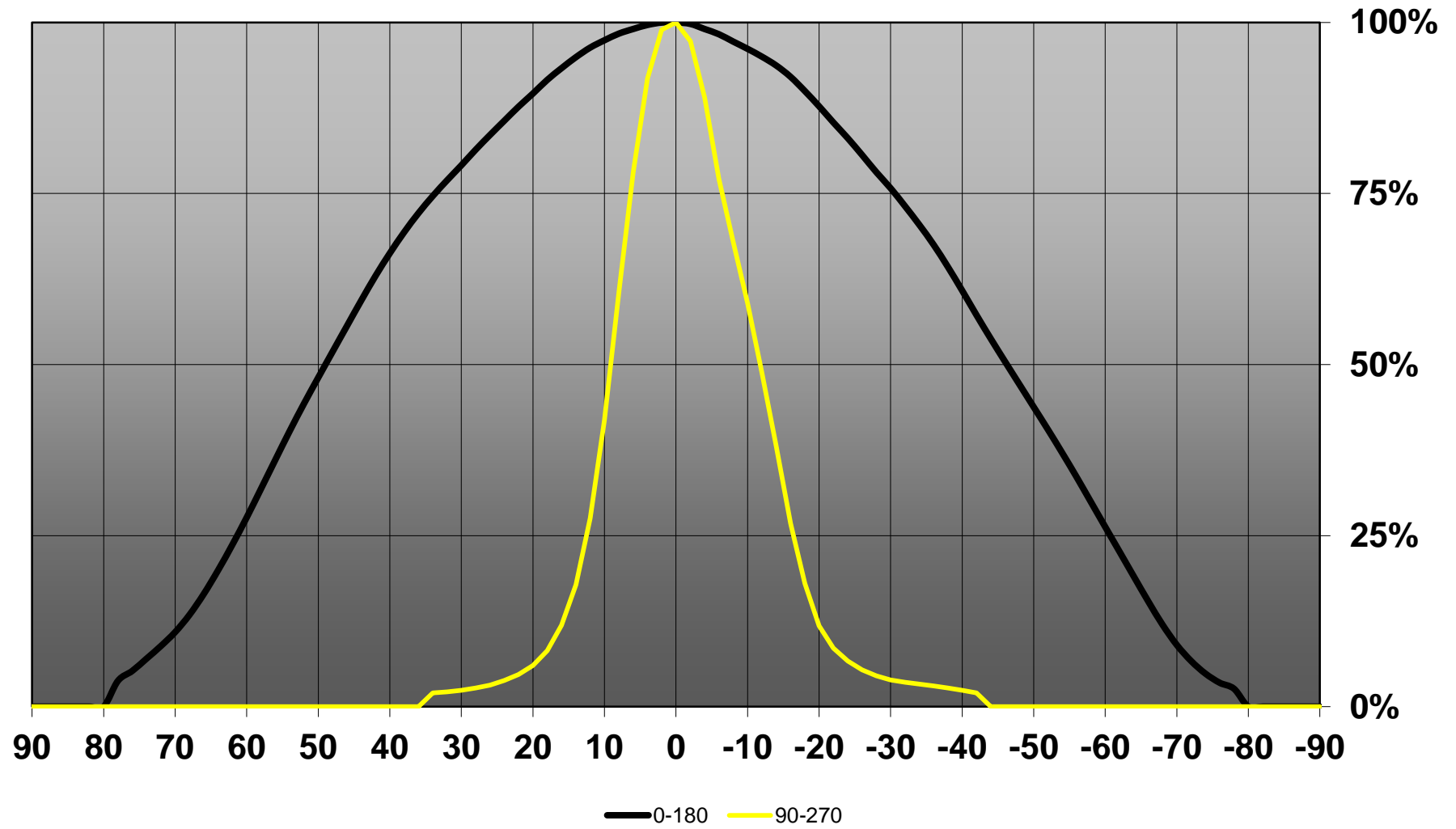
Flare series

last update 9/5/2014

OPTICAL PROPERTIES

LED	Viewing Angle	Light Beam	Effi- ciency	cd/lm	Connector
LH351Z	97+13 deg	REC-class	94 %	2.200	-
Z5M1/Z5M2	104 + 14 deg	REC-class	94 %	2.100	-

Relative intensity of CA14367_FLARE-MAXI-D-TAPE_(Duris_S10)

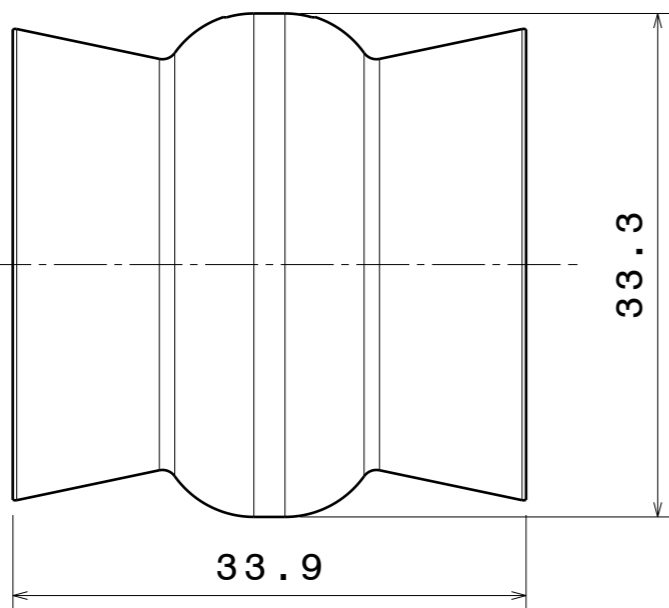
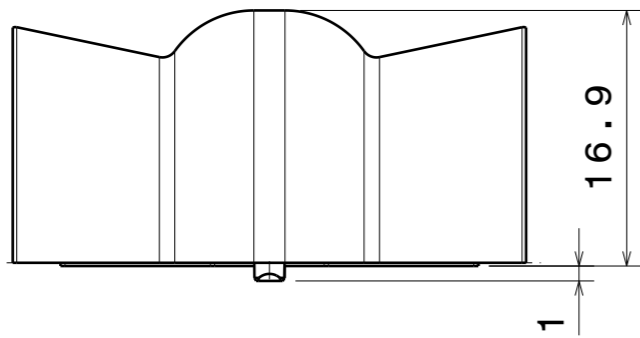
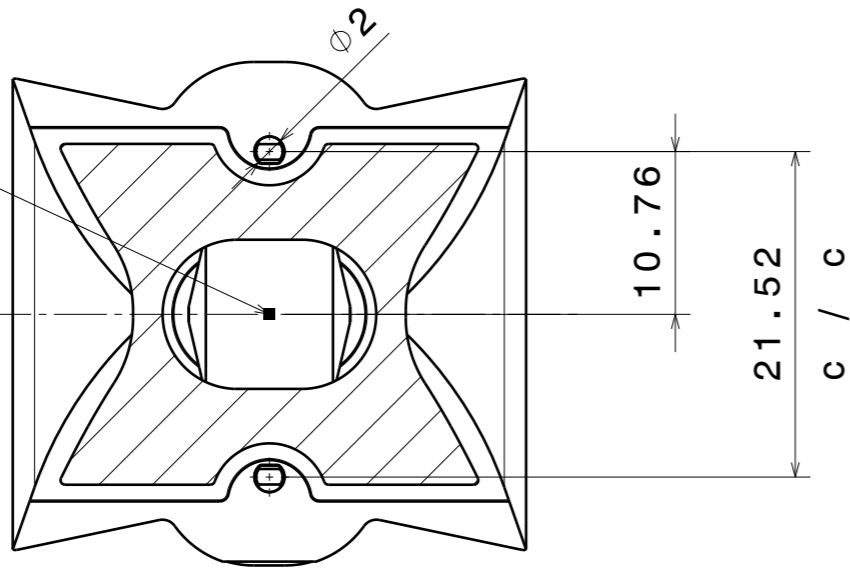


Led position

Bottom view

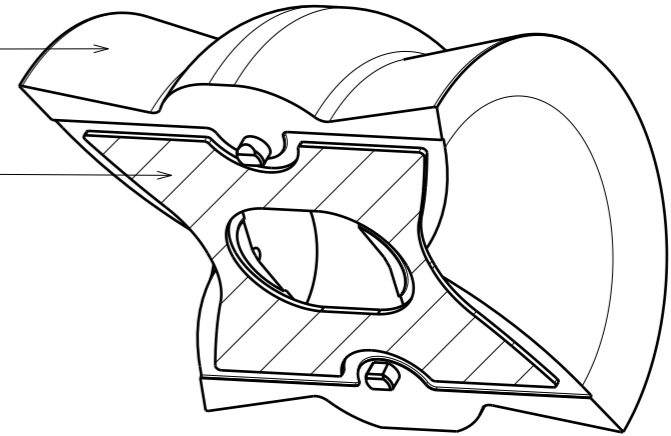
Front view

Top view



Lens

Tape



Isometric view

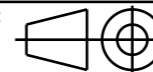
Material: PMMA 8N / PU 2-SIDED ADHESIVE FOAM TAPE

Tolerances if not otherwise shown
 According to DIN ISO 2768-1
 Linear measures:
 Up to 30mm class M, otherwise class C.
 According to DIN ISO 2768-2
 Form and position: class L



Ledil Oy
 Salorankatu 10
 FIN 24240 SALO
 Finland

THIRD ANGLE PROJECTION:



DRAWING TITLE

FLARE-MAXI (WITH TAPE)

SIZE

PART NUMBER

A3

FLARE-MAXI (WITH TAPE)

SCALE

1:1

WEIGHT

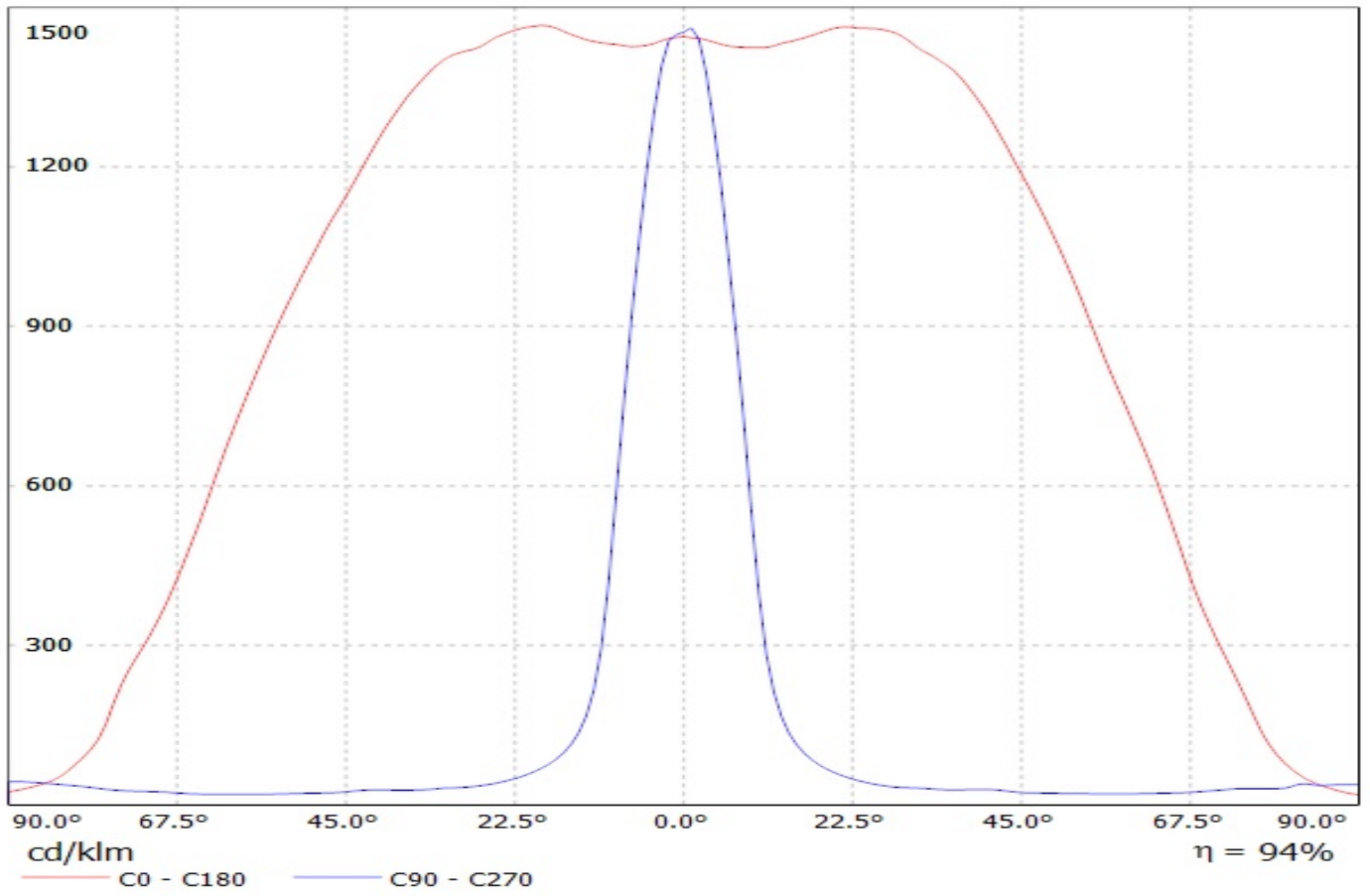
-

SHEET

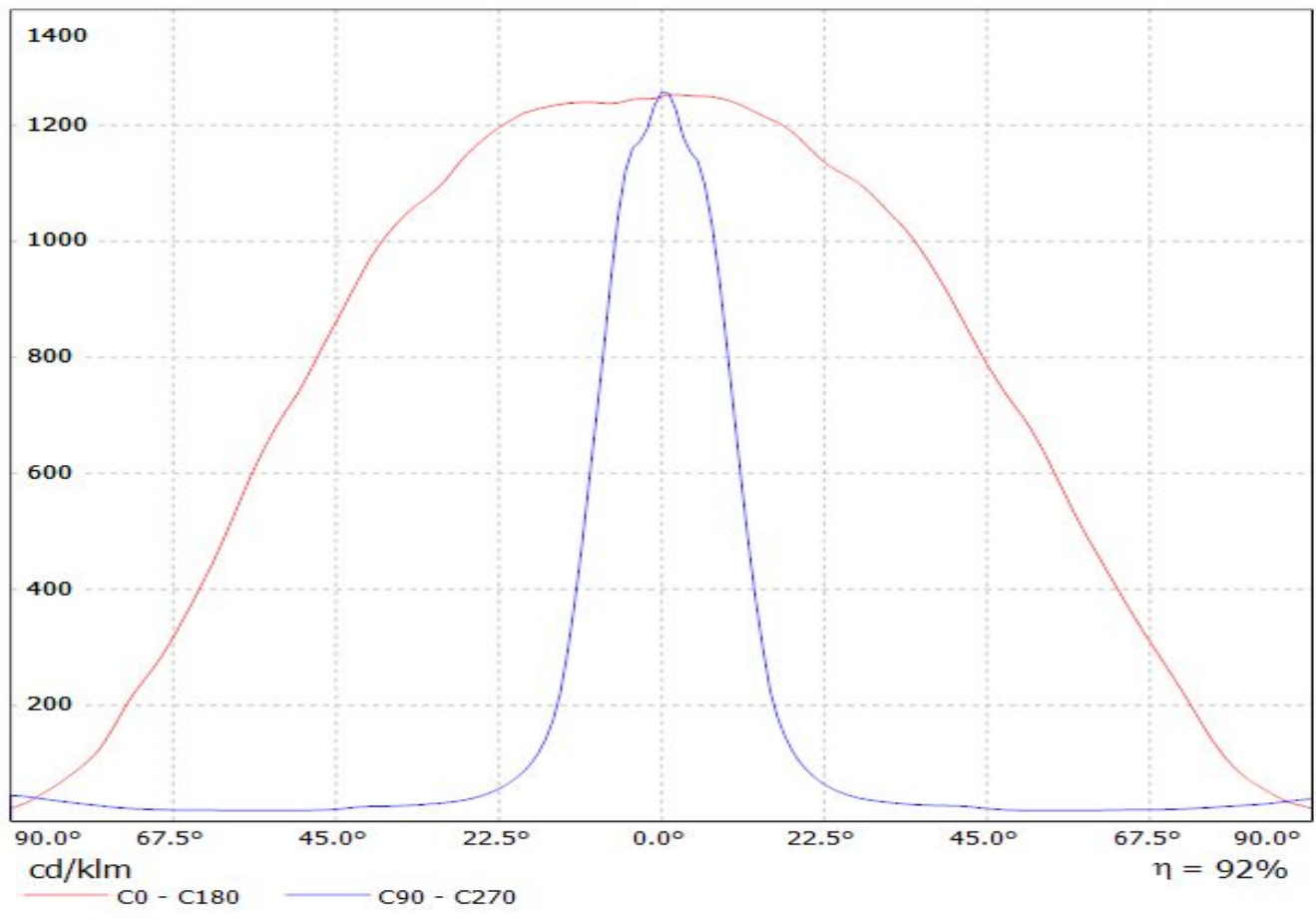
1/1

This drawing is the property
 of LEDiL Oy. It may not be
 reproduced, copied or
 communicated without a written
 agreement with LEDiL Oy.

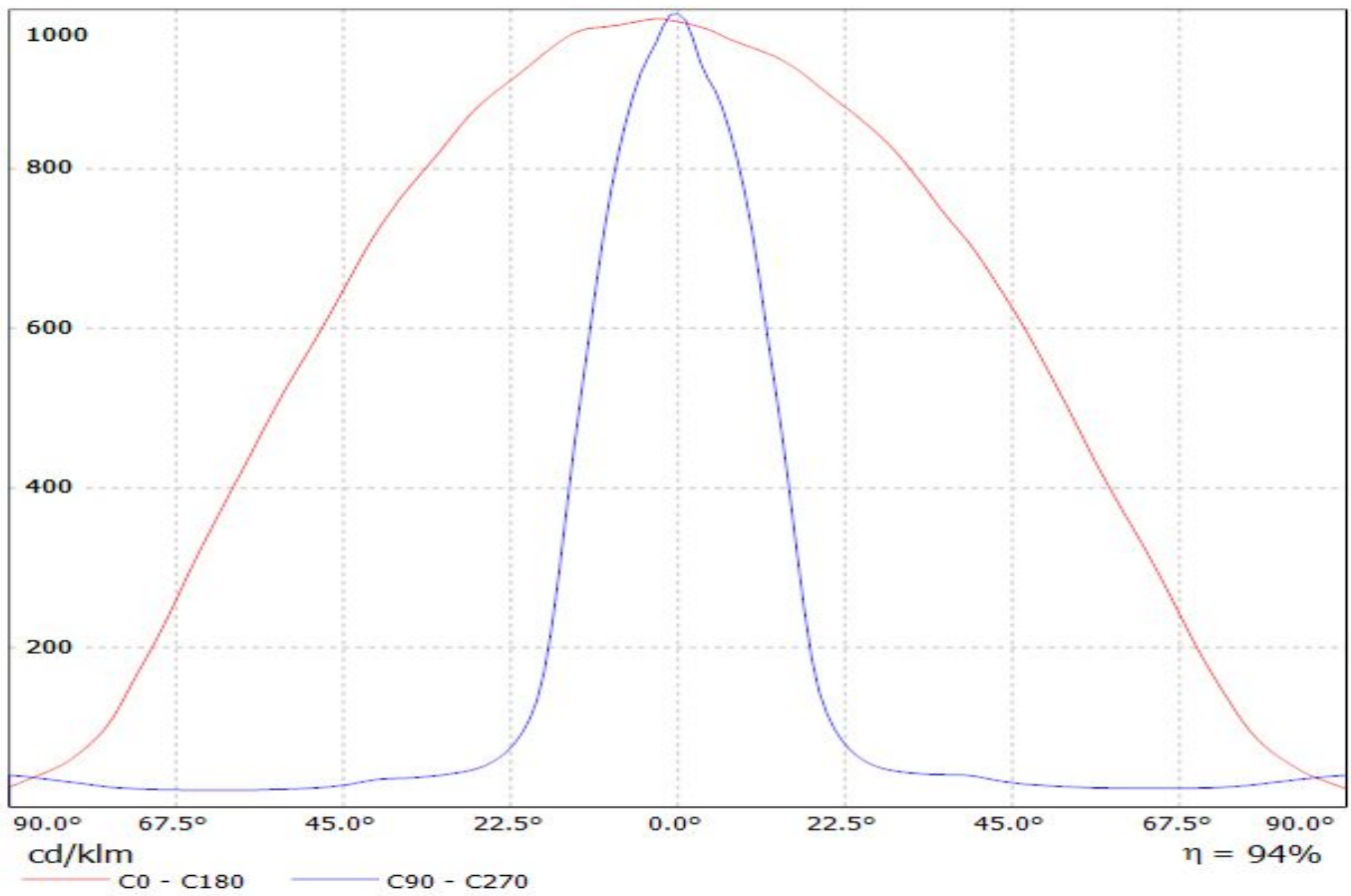
Luminaire: LEDiL Oy CA14367_FLARE-MAXI-D-TAPE_(XP-L)
Lamps: 1 x Cree_XP-L_129.7lm@250mA_P=0.73723W_I=249.9mA



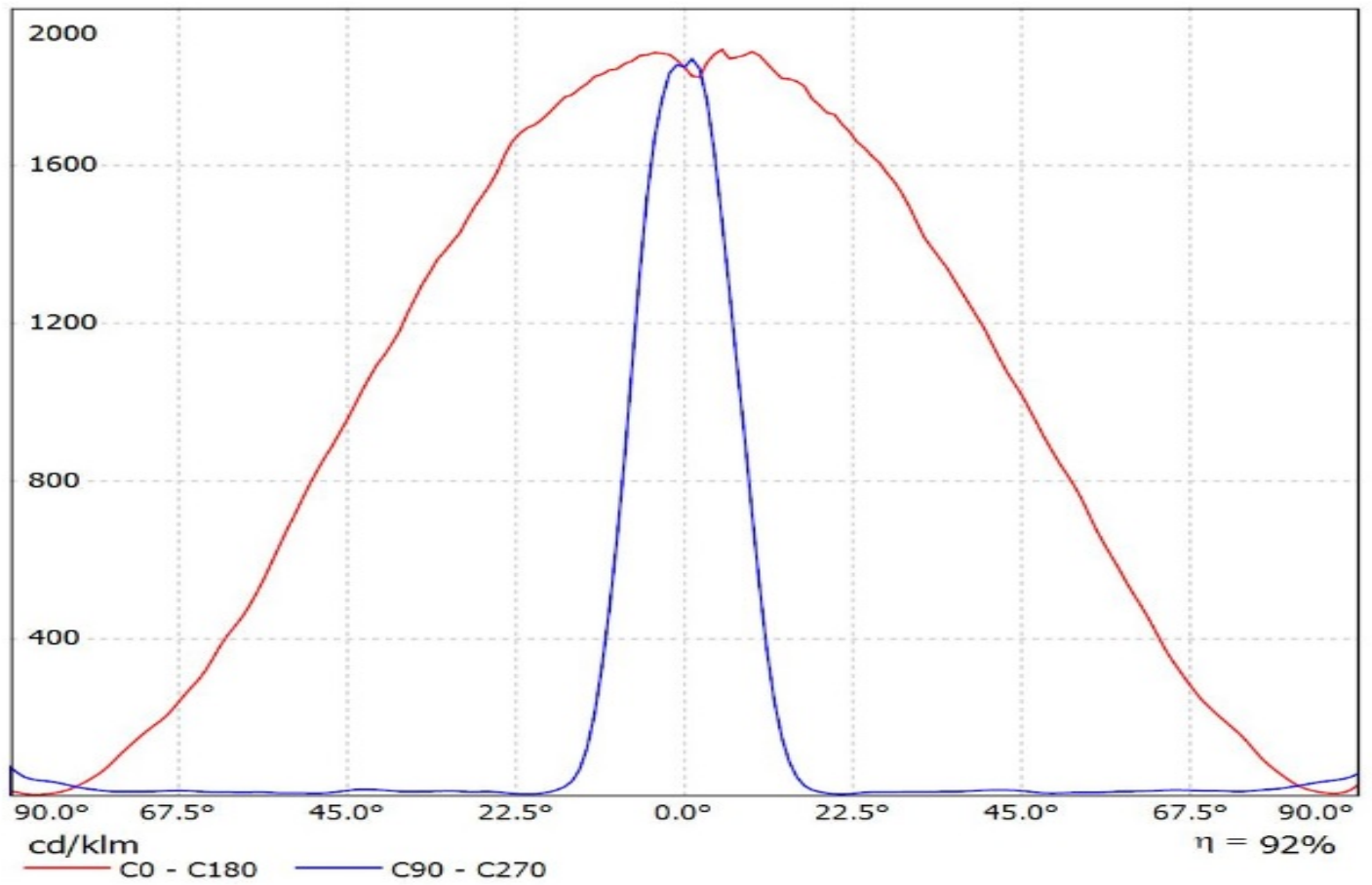
Luminaire: LEDiL Oy CA14367_FLARE-MAXI-D-TAPE_(CREE_XHP50_COOL_WHITE)
Lamps: 1 x CREE_XHP50_COOL_WHITE_242.068lm@250mA_CCT=COOLWHITE_I=02499mA_P=1.42958



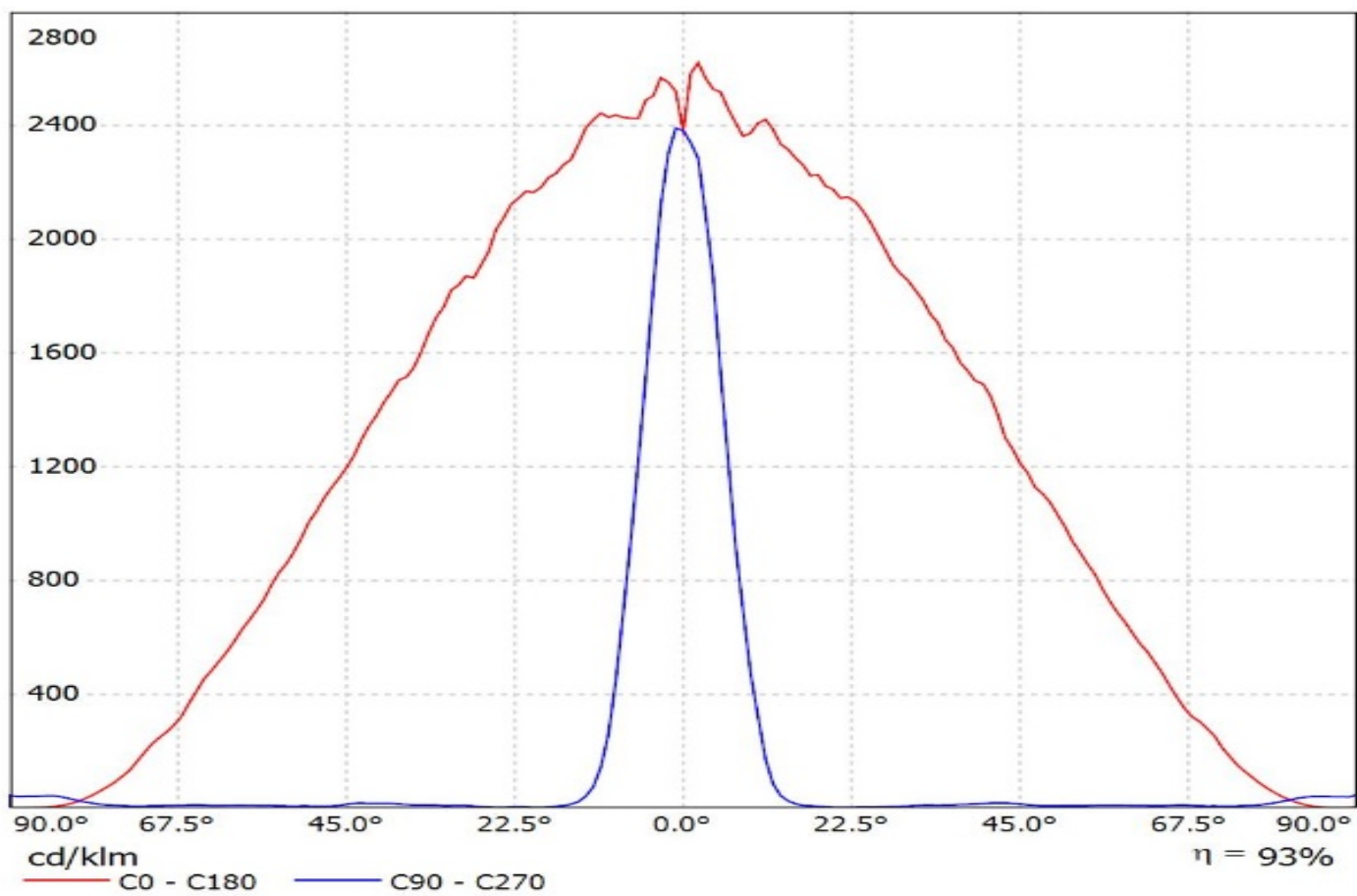
Luminaire: EVERFINE CA14367_FLARE-MAXI-D-TAPE_(CREE_XHP70)
Lamps: 1 x CREE_XHP70_288.639lm@250mA_P=2.69892W_I=0.2499A



Luminaire: Ledil Oy CA14367_FLARE-MAXI-D-TAPE_(XHP35_HD)_SIMULATED
Lamps: 1 x Cree XHP35 HD

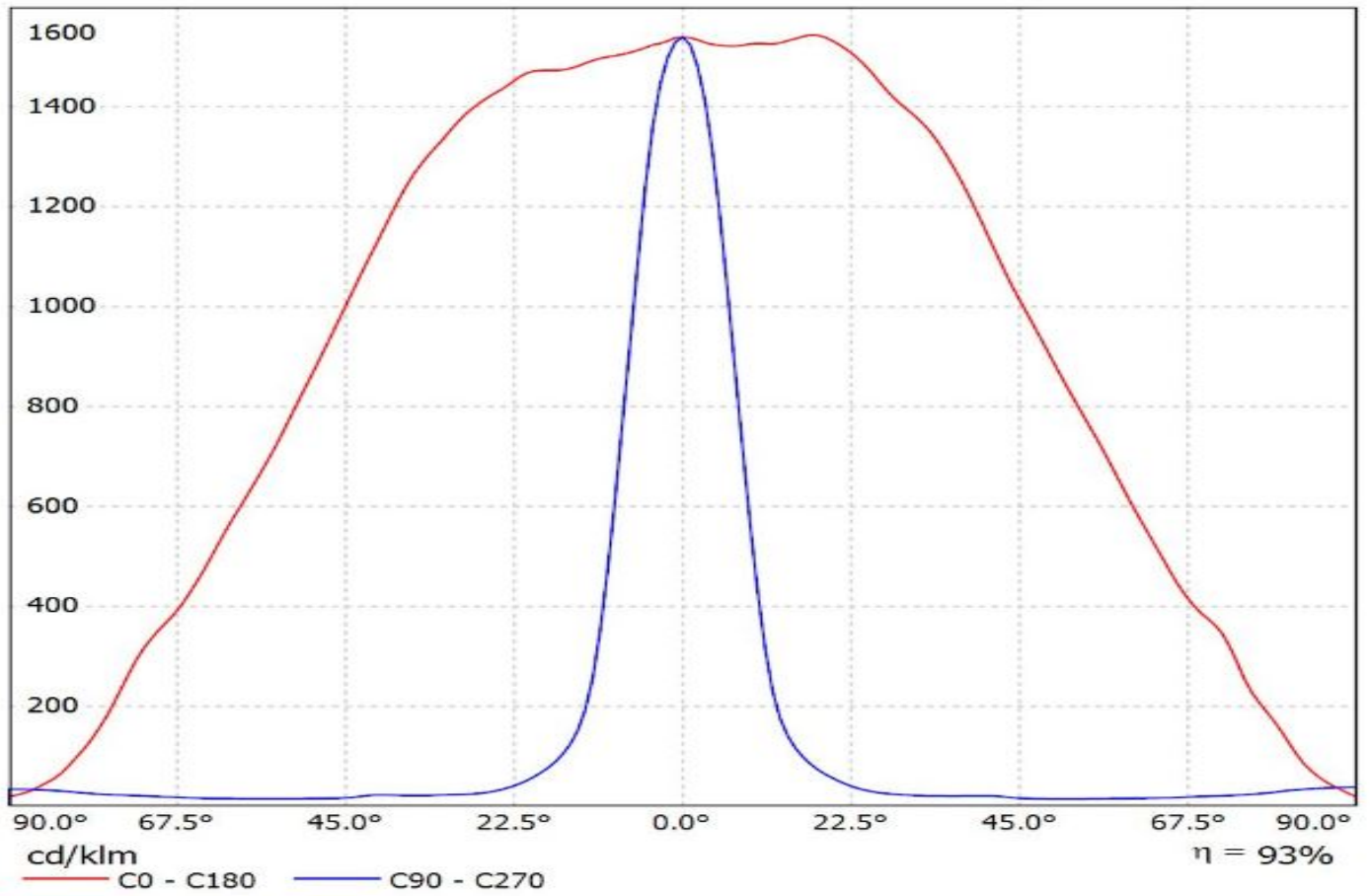


Luminaire: Ledil Oy CA14367_FLARE-MAXI-D-TAPE_(XHP35_HI)_SIMULATED
Lamps: 1 x Cree XHP35 HI

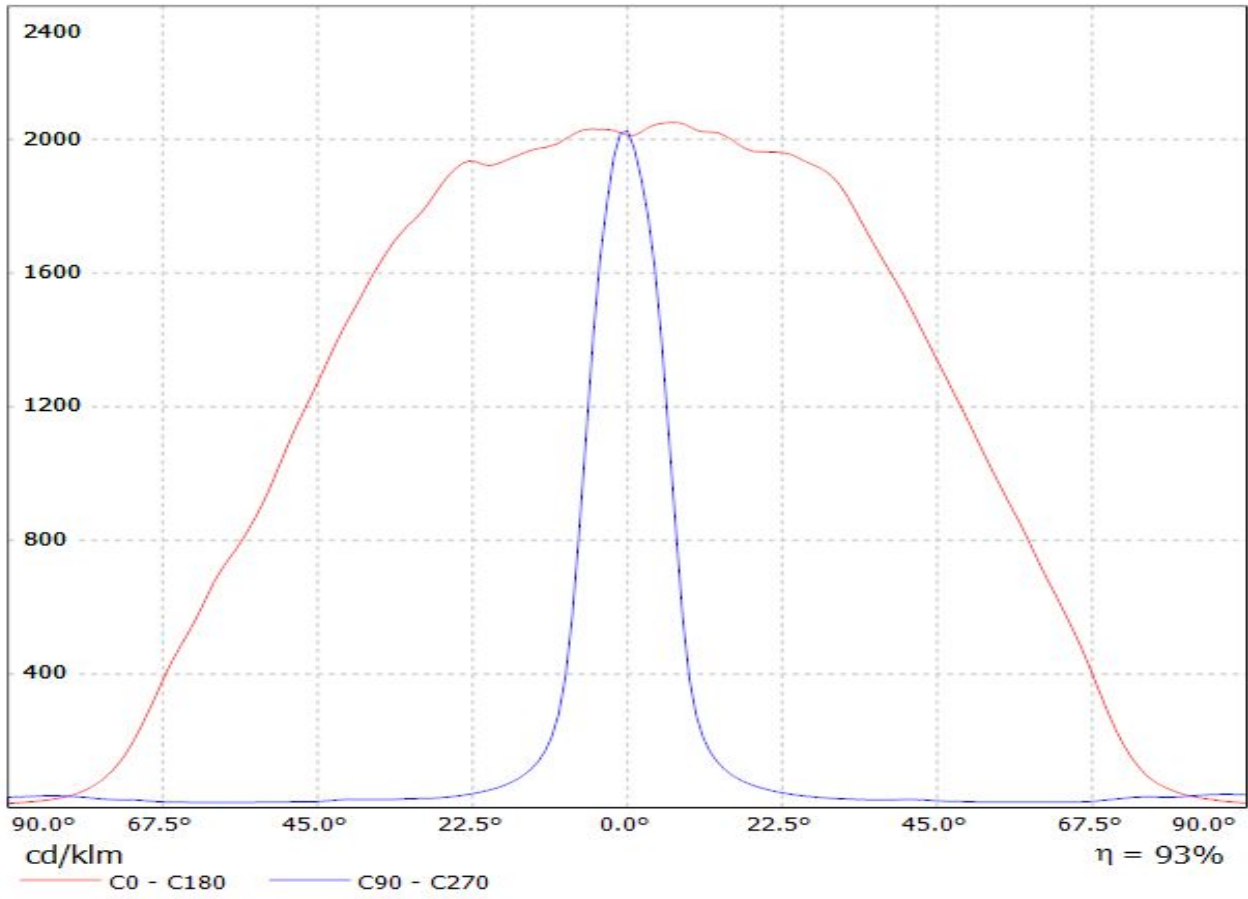


Luminaire: Ledil CA14367_FLARE-MAXI-D-TAPE_(XP-L2)

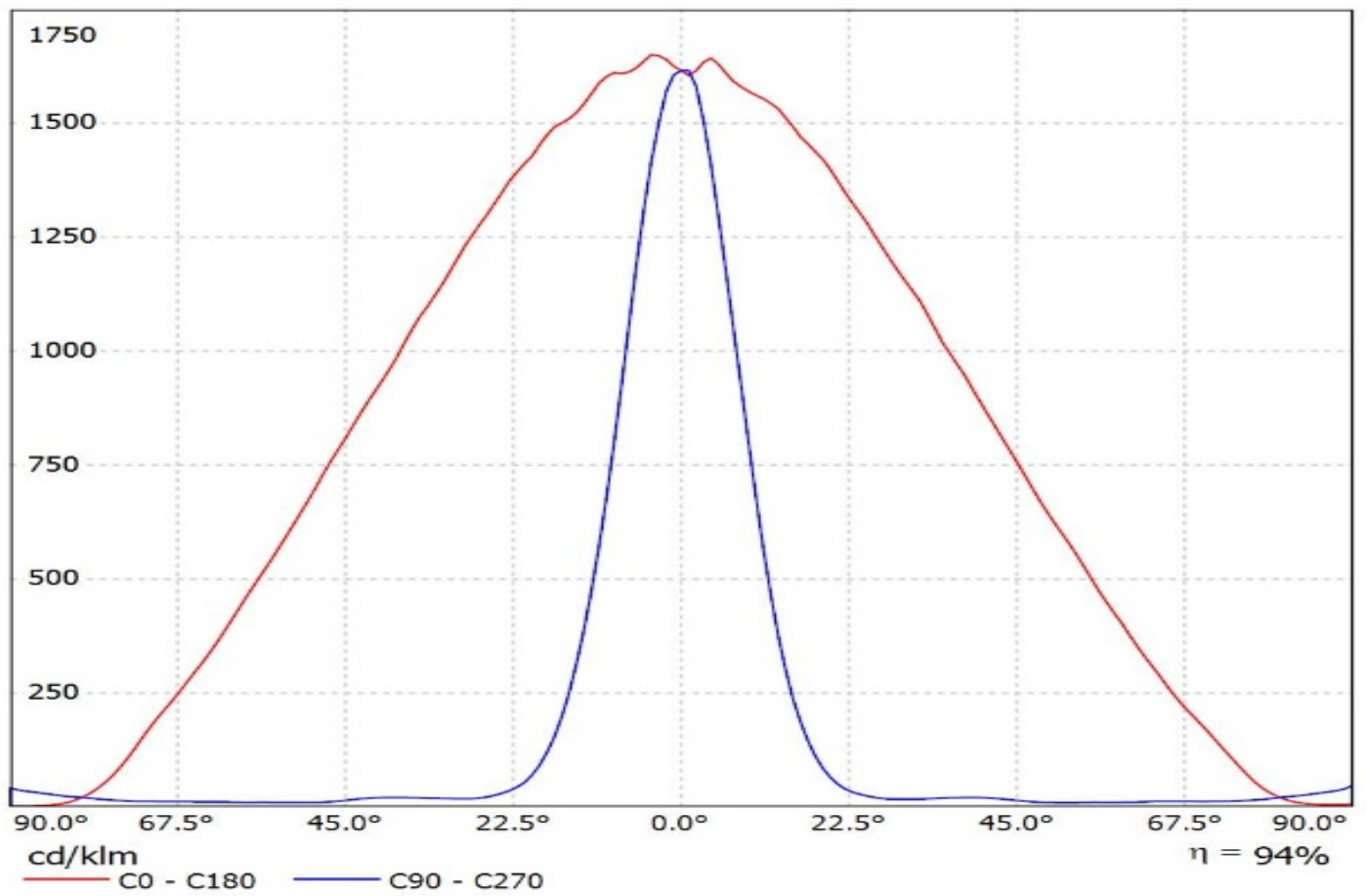
Lamps: 1 x Cree_XP-L2_(XPLWT-00-0000-000HU630G)_115.75lm@250mA_P=0.721375W_I=0.25A



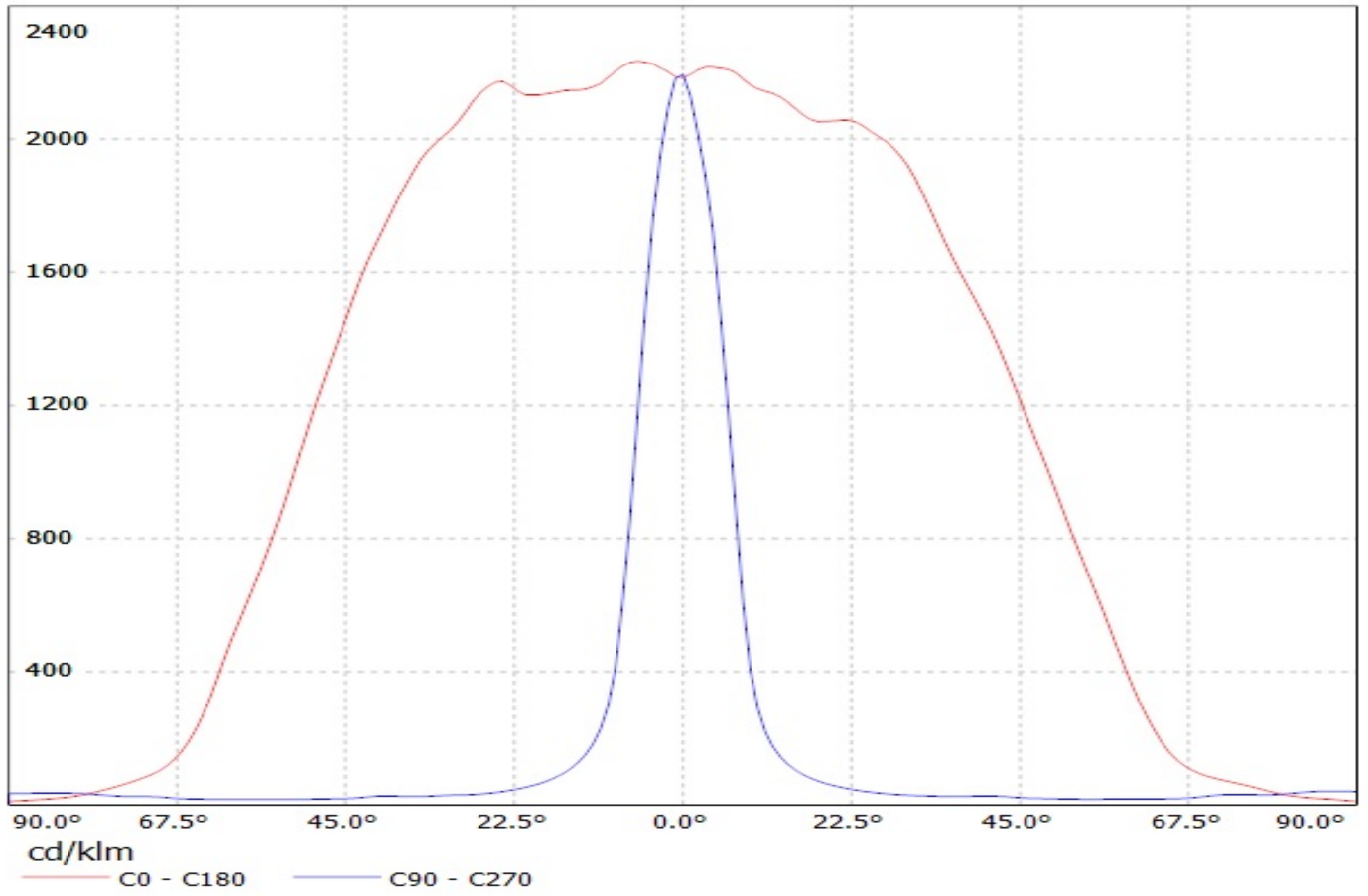
Luminaire: LEDiL Oy CA14367_FLARE-MAXI-D-TAPE_(Luxeon_TX) Eff.93.3%
Lamps: 1 x Luxeon_TX_(L1T2-3585)_80.1801lm@250mA_CCT=3500K_P=0.731482W_I=249.9mA



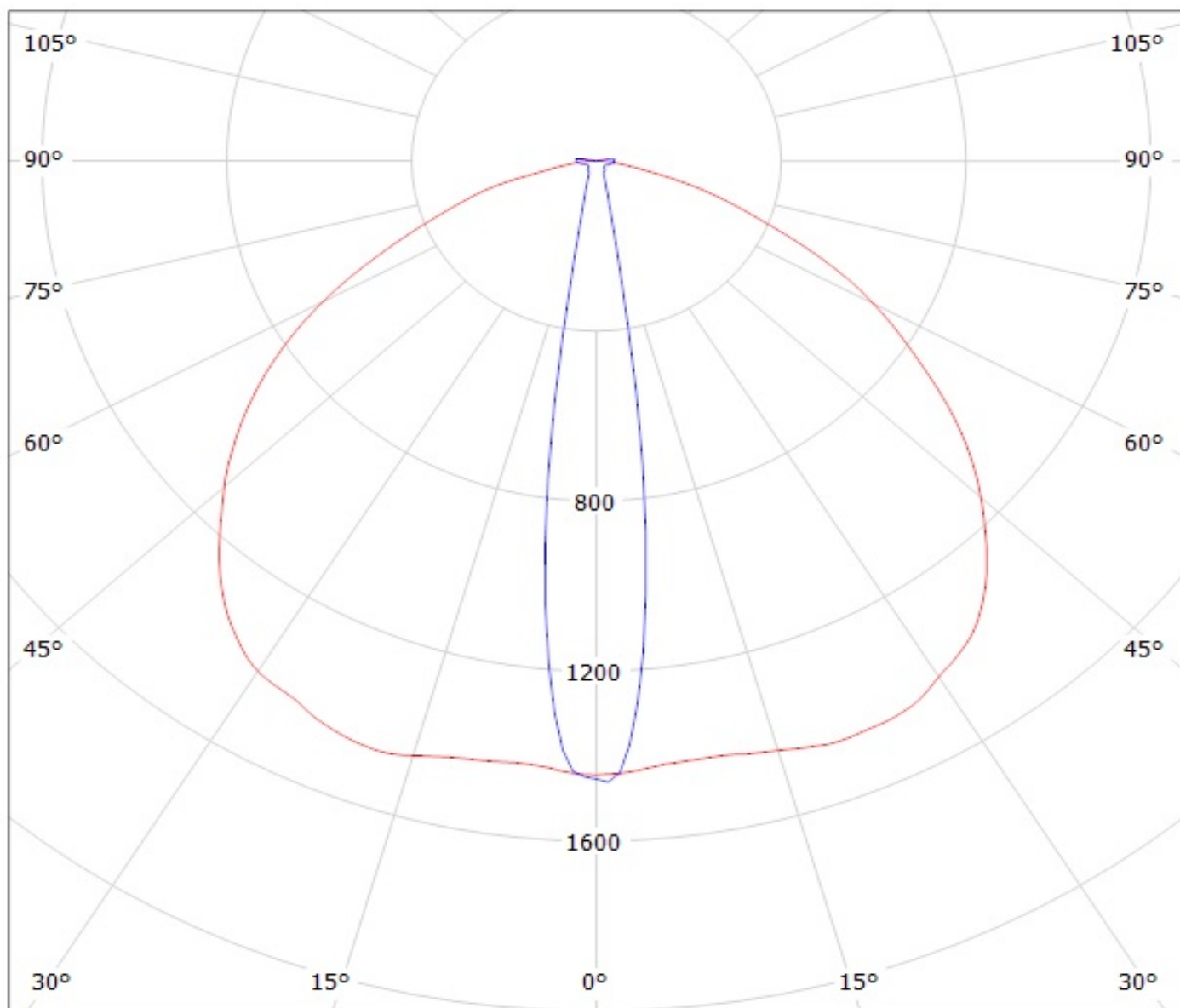
Luminaire: Ledil Oy CA14367_FLARE-MAXI-D-TAPE_(Duris_S10)_SIMULATED
Lamps: 1 x Osram Duris S10 (GW P7LM32.EM)



Luminaire: LEDiL Oy CA14367_FLARE-MAXI-D-TAPE_(LH351Z) Eff.93.6%
Lamps: 1 x SAMSUNG_LH351Z_90.8111lm@250mA_P=0.748076W_I=249.9mA



Luminaire: LEDiL Oy CA14367_FLARE-MAXI-D-TAPE_(XP-L)
Lamps: 1 x Cree_XP-L_129.7lm@250mA_P=0.73723W_I=249.9mA



cd/klm

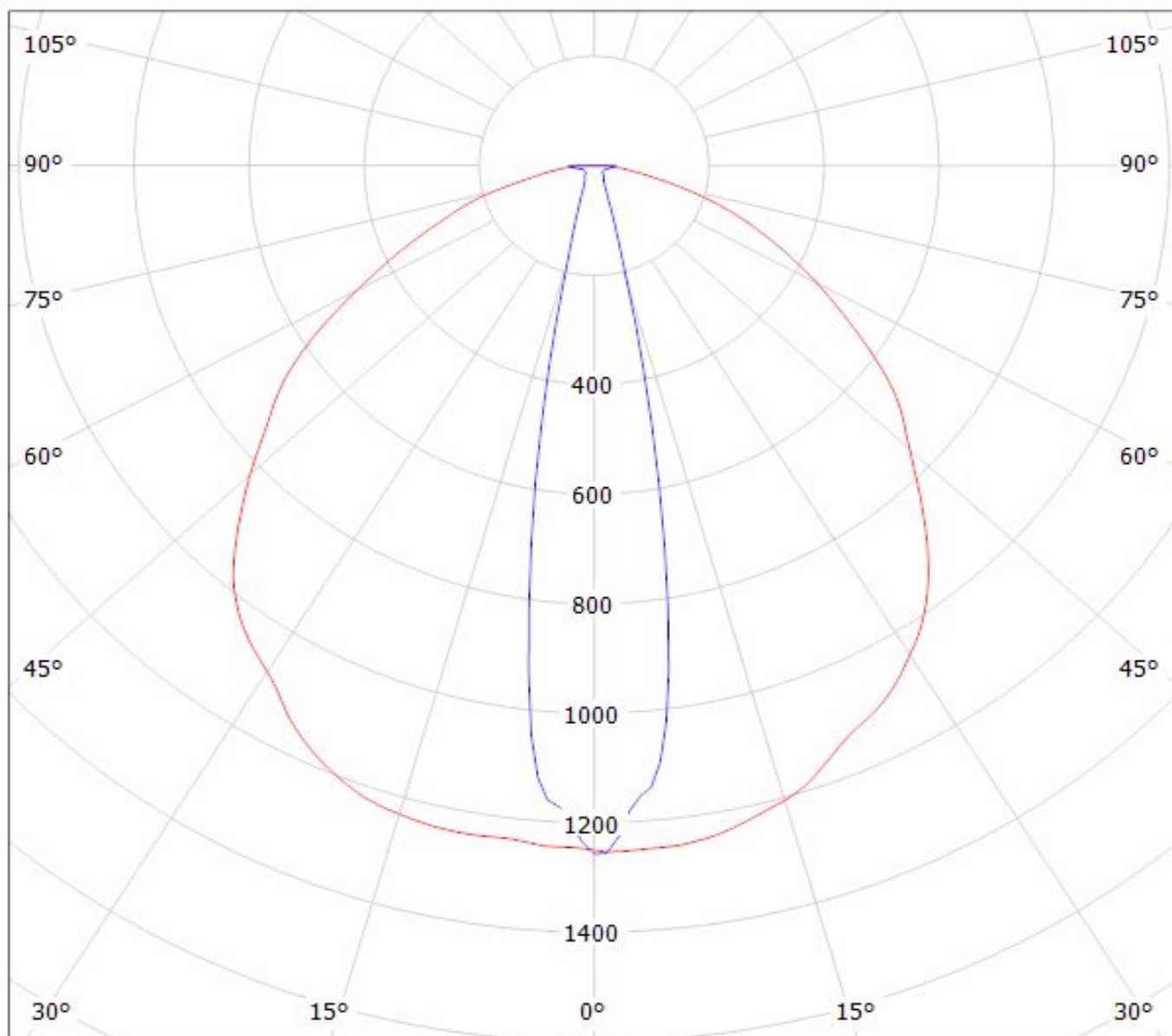
— C0 - C180

— C90 - C270

$\eta = 94\%$

Luminaire: LEDiL Oy CA14367_FLARE-MAXI-D-TAPE_(CREE_XHP50_COOL_WHITE)

Lamps: 1 x CREE_XHP50_COOL_WHITE_242.068lm@250mA_CCT=COOLWHITE_I=02499mA_P=1.42958



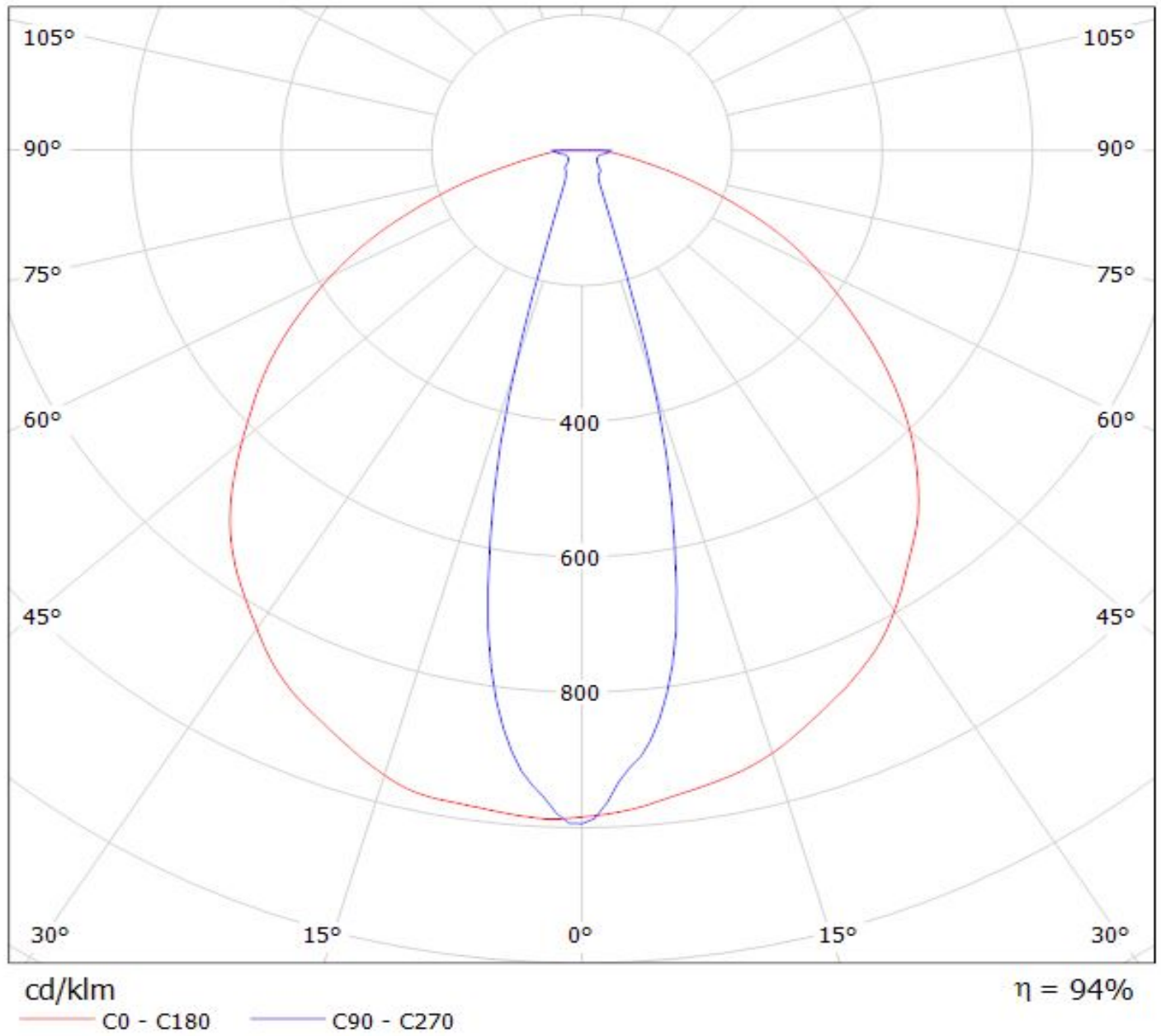
cd/klm

— C0 - C180

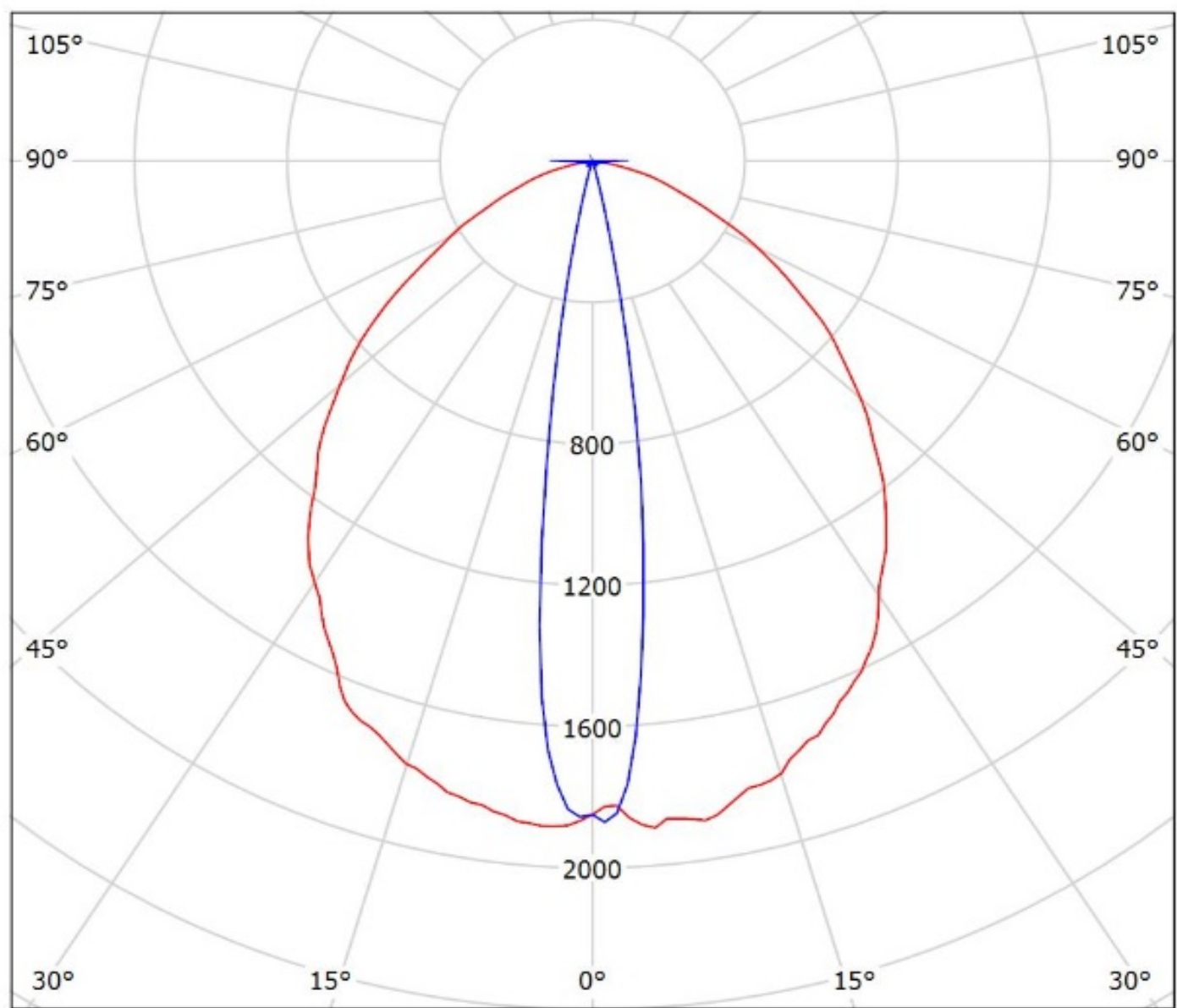
— C90 - C270

$\eta = 92\%$

Luminaire: EVERFINE CA14367_FLARE-MAXI-D-TAPE_(CREE_XHP70)
Lamps: 1 x CREE_XHP70_288.639lm@250mA_P=2.69892W_I=0.2499A



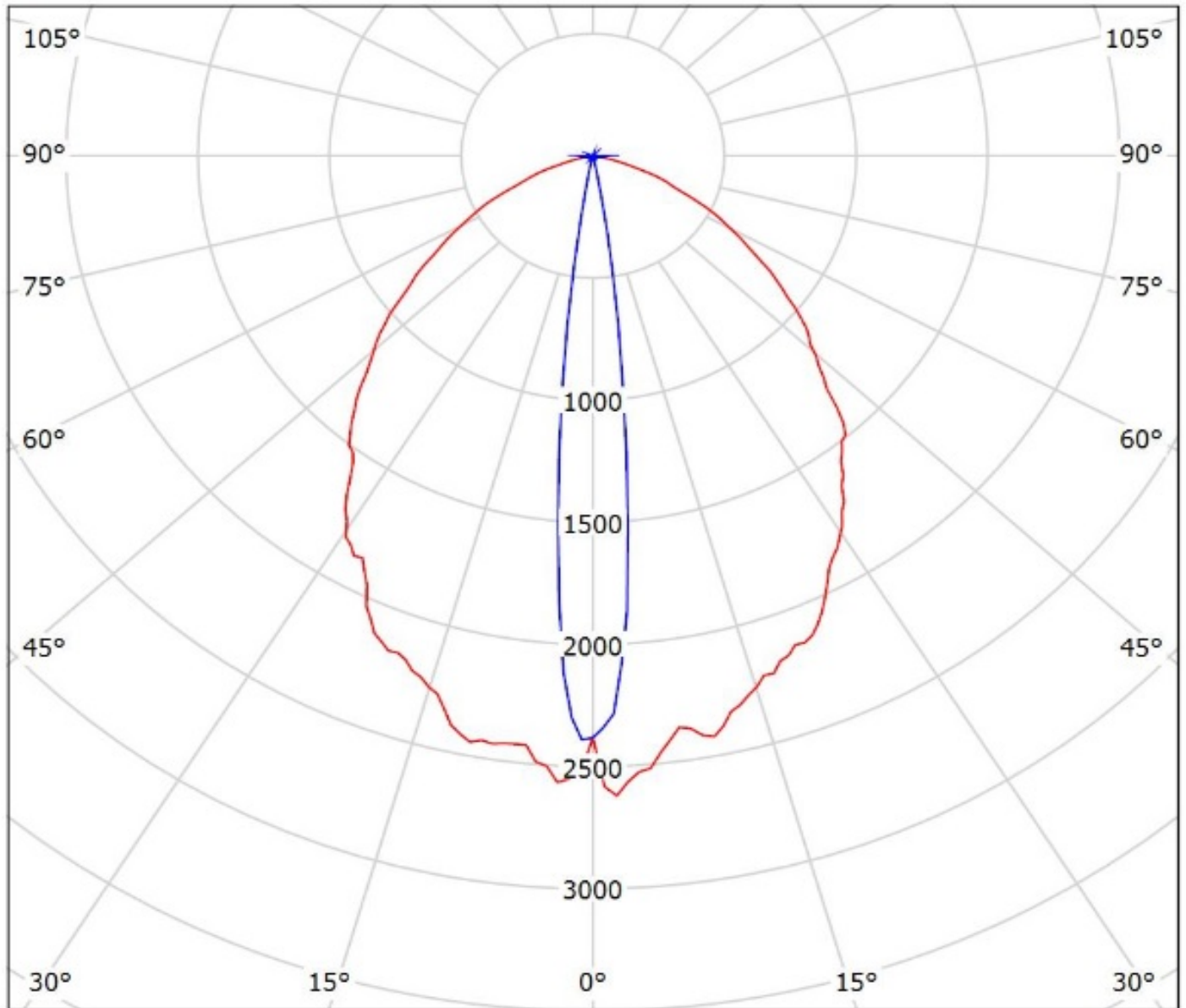
Luminaire: Ledil Oy CA14367_FLARE-MAXI-D-TAPE_(XHP35_HD)_SIMULATED
Lamps: 1 x Cree XHP35 HD



cd/klm
— C0 - C180 — C90 - C270

$\eta = 92\%$

Luminaire: Ledil Oy CA14367_FLARE-MAXI-D-TAPE_(XHP35_HI)_SIMULATED
Lamps: 1 x Cree XHP35 HI



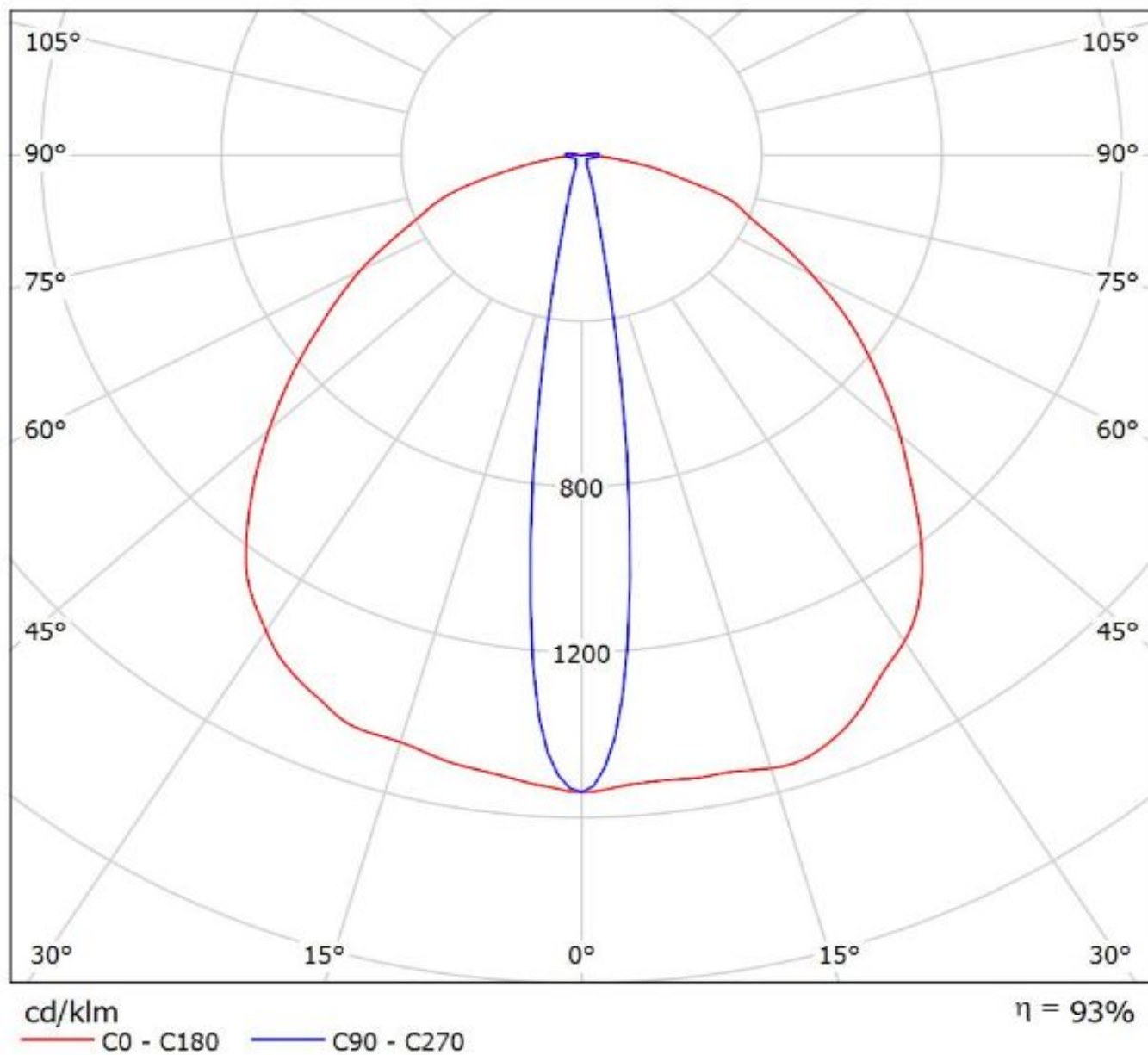
cd/klm

— C0 - C180 — C90 - C270

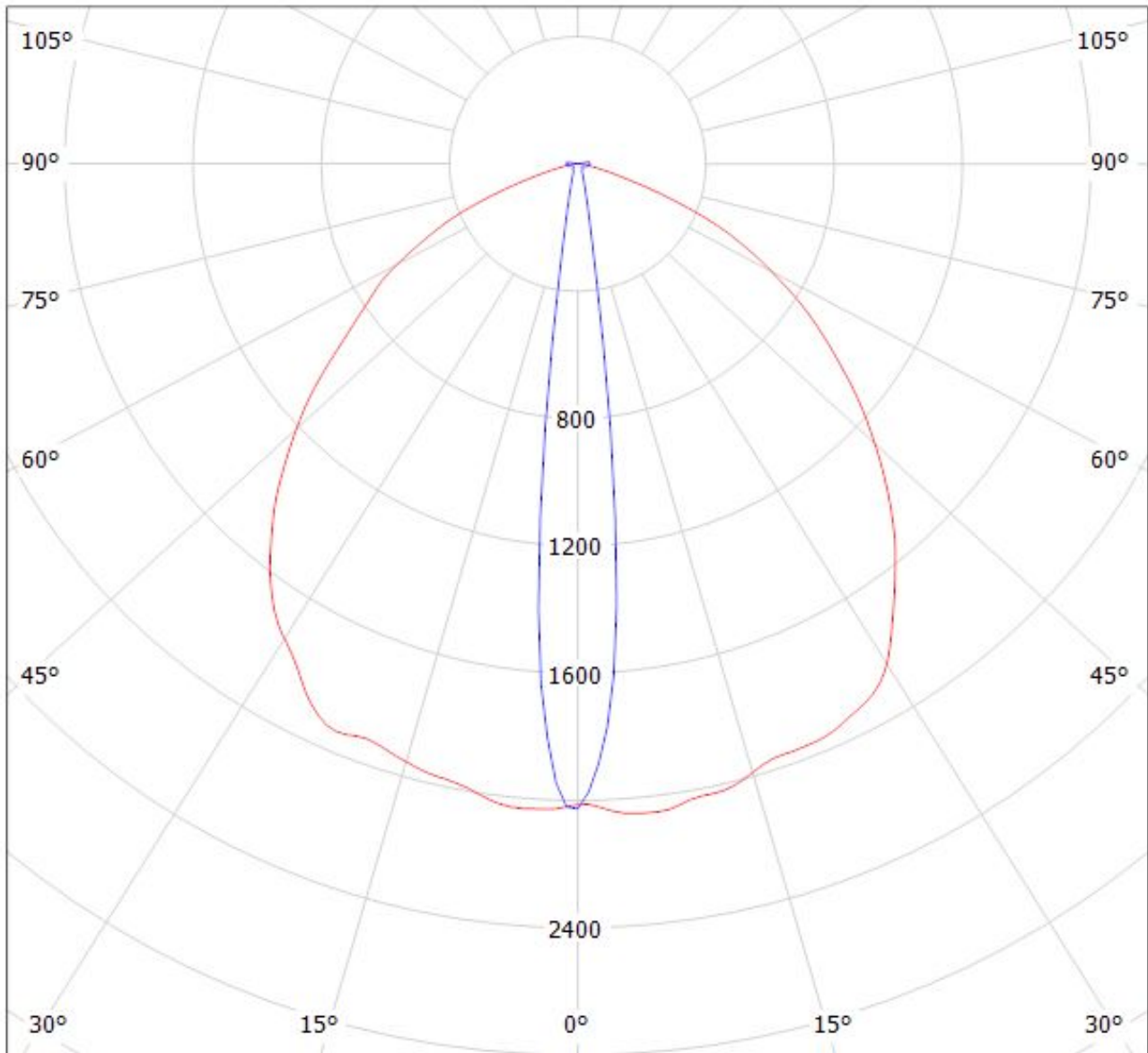
$\eta = 93\%$

Luminaire: Ledil CA14367_FLARE-MAXI-D-TAPE_(XP-L2)

Lamps: 1 x Cree_XP-L2_(XPLWT-00-0000-000HU630G)_115.75lm@250mA_P=0.721375W_I=0.25A



Luminaire: LEDiL Oy CA14367_FLARE-MAXI-D-TAPE_(Luxeon_TX) Eff.93.3%
Lamps: 1 x Luxeon_TX_(L1T2-3585)_80.1801lm@250mA_CCT=3500K_P=0.731482W_I=249.9mA

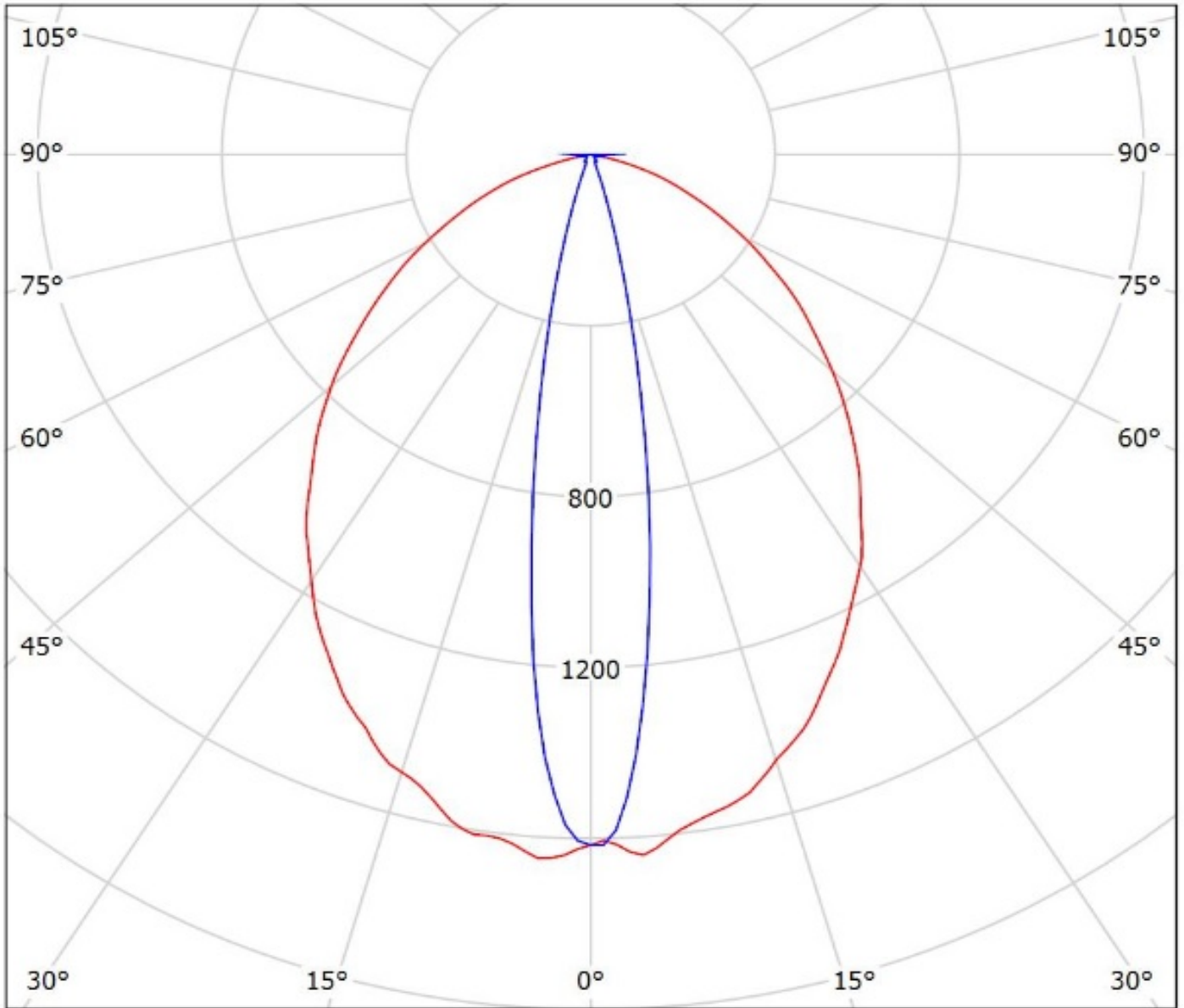


cd/klm

— C0 - C180 — C90 - C270

$\eta = 93\%$

Luminaire: Ledil Oy CA14367_FLARE-MAXI-D-TAPE_(Duris_S10)_SIMULATED
Lamps: 1 x Osram Duris S10 (GW P7LM32.EM)

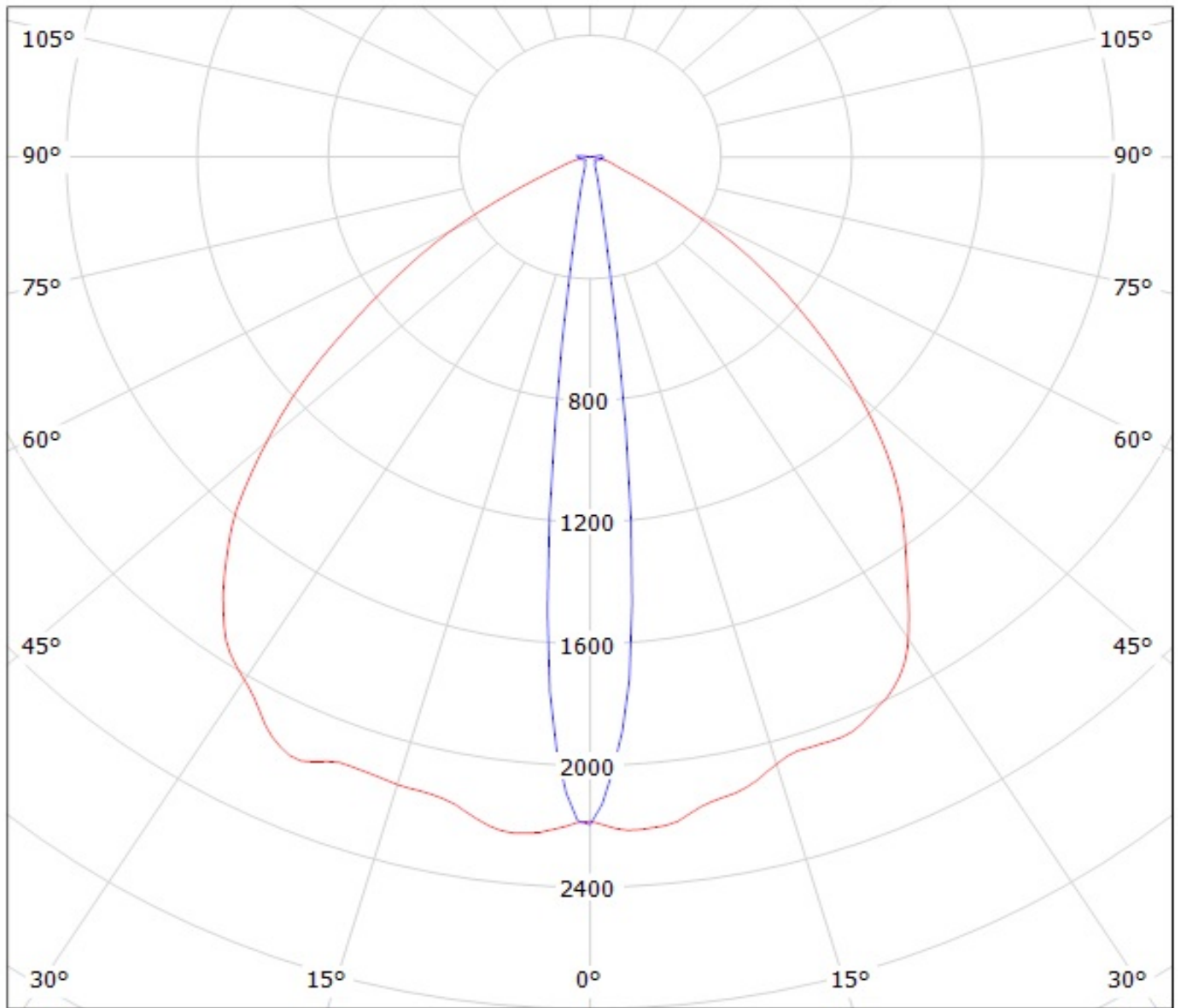


cd/klm

— C0 - C180 — C90 - C270

$\eta = 94\%$

Luminaire: LEDiL Oy CA14367_FLARE-MAXI-D-TAPE_(LH351Z) Eff.93.6%
Lamps: 1 x SAMSUNG_LH351Z_90.8111lm@250mA_P=0.748076W_I=249.9mA



cd/klm
— C0 - C180 — C90 - C270

NOTE: The typical divergence will be changed by different color, chip size and chip position tolerance. The typical total divergence is the full angle measured where the luminous intensity is half of the peak value.