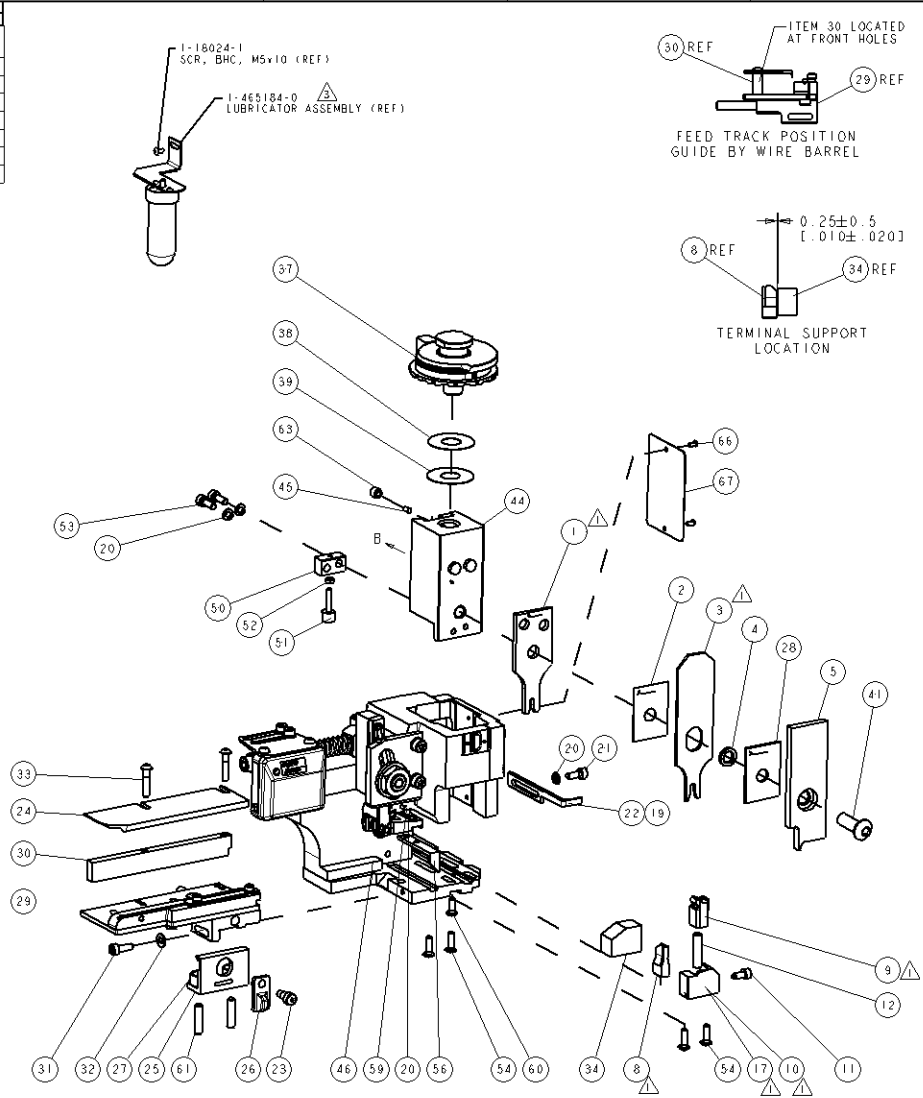
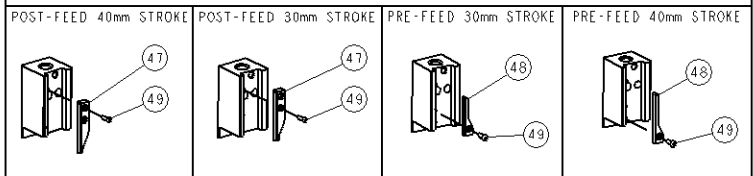


| PART NUMBER | REV | TERMINATOR | FEED TYPE      | DESCRIPTION        |
|-------------|-----|------------|----------------|--------------------|
| 1528741-1   | A   | LEADMAKER  | MECH POST FEED | CUTS CARRIER       |
| 1528741-2   | A   | BENCH      | MECH PRE FEED  | CUTS CARRIER       |
| 1528741-6   | A   | LEADMAKER  | MECH POST FEED | CONTINUOUS CARRIER |
| 7-1528741-1 | A   | LEADMAKER  | MECH POST FEED | -1 AND SPARE PARTS |
| 7-1528741-2 | A   | BENCH      | MECH PRE FEED  | -2 AND SPARE PARTS |
| 7-1528741-6 | A   | LEADMAKER  | MECH POST FEED | -6 AND SPARE PARTS |
| 7-1528741-7 | A   | -          | -              | SPARE PARTS KIT    |

| CRIMP DATA                                 |                                       | LEAR/GHW TERMINAL         | LEAR CRIMP SPECS |
|--|---------------------------------------|---------------------------|------------------|
| TERMINAL NAME: MAK 28 RECEPTACLE 2.8 X 0.8 |                                       |                           |                  |
| CRIMP SIZE                                 | TYPE                                  | RANGE                     |                  |
| WIRE 2.54 (.100 IN)                        | F                                     | 1.50-2.50mm <sup>2</sup>  |                  |
| INSUL 3.56 (.140 IN)                       | F                                     | 1.80-3.20 (.071- .126 IN) |                  |
| WIRE STRIP LENGTH 5.00 (.197 IN)           | APPL INSTRUCTIONS 408-8322 & 408-8490 |                           |                  |
| TERMINAL APPL SPEC 28273                   | FEED 11.68 (.460 IN)                  |                           |                  |
| TERMINALS APPLIED                          |                                       |                           |                  |
| TYCO TERM PN                               | MANUF TERM PN                         | -                         | -                |
| 1949213-1                                  | 28273 306 185                         | -                         | -                |
| -  | -                                     | -                         | -                |
| -  | -                                     | -                         | -                |
| -  | -                                     | -                         | -                |
| WIRE SIZE                                  | CRIMP HEIGHT                          | REF SETTING               |                  |
| 2.50mm <sup>2</sup>                        | 1.60 ± 0.05 (.063 ± .002 IN)          | B8                        |                  |
| 1.50mm <sup>2</sup>                        | 1.40 ± 0.05 (.055 ± .002 IN)          | D2                        |                  |
| -  | -                                     | -                         | -                |
| -  | -                                     | -                         | -                |
| -  | -                                     | -                         | -                |
| -  | -                                     | -                         | -                |
| -  | -                                     | -                         | -                |
| -  | -                                     | -                         | -                |
| -  | -                                     | -                         | -                |
| -  | -                                     | -                         | -                |
| -  | -                                     | -                         | -                |

- △ RECOMMENDED SPARE PARTS.
  - 2. GREASE RAM, CAM, CAM FOLLOWER AND FEED ROD LIGHTLY.
  - △ CERTAIN TERMINALS REQUIRE LUBRICATION. REFER TO THE APPLICATOR INSTRUCTION SHEET FOR MORE INFORMATION.
  - 4. LUBRICATE DAILY PER THE APPLICATOR INSTRUCTION SHEET SUPPLIED WITH THE APPLICATOR.
  - △ ALL CRIMP DATA SUPPLIED BY TERMINAL MANUFACTURER.
  - △ INSULATION CRIMP HEIGHTS NOT RECOMMENDED FOR USE BY TYCO ELECTRONICS UK LTD.
- \* WARNING  
ON INSTALLATION, SET WIRE DISC TO LARGEST WIRE SIZE SETTING. USE OF SETTINGS BELOW MIN. REQUIRED CRIMP HEIGHT SETTING WILL CAUSE DAMAGE TO CRIMP TOOLING.

VIEW B ROTATED 180°



SET UP GAGE  
458637-3

| REVOLUTIONS |                   | DATE     | BY | CHKD |
|-------------|-------------------|----------|----|------|
| A           | SET ECR-08-929760 | 20020808 | DP | MC   |
| AI          | ECR-11-003485     | 10/02/01 | CC | SK   |

| QTY | REV | DESCRIPTION | DATE | BY | CHKD        |                                 |         |             |         |
|-----|-----|-------------|------|----|-------------|---------------------------------|---------|-------------|---------|
| -   | -   | -           | -    | -  | 73          |                                 |         |             |         |
| -   | -   | -           | -    | -  | 72          |                                 |         |             |         |
| -   | 1   | 1           | 1    | 1  | 1338705-3   | DOCUMENTATION PACKAGE           | 71      |             |         |
| -   | -   | -           | -    | -  | -           | -                               | 70      |             |         |
| -   | -   | -           | -    | -  | -           | -                               | 69      |             |         |
| -   | -   | -           | -    | -  | -           | -                               | 68      |             |         |
| -   | 1   | 1           | 1    | 1  | 461264-5    | PLATE, IDENTIFICATION           | 67      |             |         |
| -   | 2   | 2           | 2    | 2  | 21017-2     | SCREW, DRIVE                    | 66      |             |         |
| -   | -   | -           | -    | -  | -           | -                               | 65      |             |         |
| -   | -   | -           | -    | -  | -           | -                               | 64      |             |         |
| -   | 1   | 1           | 1    | 1  | 3-18031-0   | SCR, SET, CUP POINT M6 X 6.0    | 63      |             |         |
| -   | -   | -           | -    | -  | -           | -                               | 62      |             |         |
| -   | 2   | 2           | 2    | 2  | 2-18032-5   | SCR, SET, FLT POINT M5 X 20.0   | 61      |             |         |
| -   | 1   | 1           | 1    | 1  | 18024-7     | SCR, BTN SKT HD CAP 1M4 X 10.0  | 60      |             |         |
| -   | 1   | 1           | 1    | 1  | 6-18022-2   | SCR, HEX HD CAP M4 X 8.0        | 59      |             |         |
| -   | -   | -           | -    | -  | -           | -                               | 58      |             |         |
| -   | -   | -           | -    | -  | -           | -                               | 57      |             |         |
| -   | 1   | 1           | 1    | 1  | 1338685-1   | PAWL, FEED                      | 56      |             |         |
| -   | -   | -           | -    | -  | -           | -                               | 55      |             |         |
| -   | 4   | 4           | 4    | 4  | 18024-8     | SCR, BTN SKT HD CAP 1M4 X 12.0  | 54      |             |         |
| -   | 2   | 2           | 2    | 2  | 1-18023-2   | SCR, SKT HD CAP M4 X 12.0       | 53      |             |         |
| -   | 1   | 1           | 1    | 1  | 18030-1     | NUT, HEX, REG M3                | 52      |             |         |
| -   | 1   | 1           | 1    | 1  | 811242-5    | BUMPER, HOLD DOWN               | 51      |             |         |
| -   | 1   | 1           | 1    | 1  | 690753-2    | SPACER, TONKER                  | 50      |             |         |
| -   | 1   | 1           | 1    | 1  | 18024-3     | SCR, BTN SKT HD CAP 1M3 X 10.0  | 49      |             |         |
| -   | 1   | 1           | 1    | 1  | 1338675-1   | CAM, UNIVERSAL PRE FEED         | 48      |             |         |
| -   | 1   | 1           | 1    | 1  | 1338676-1   | CAM, UNIVERSAL POST-FEED        | 47      |             |         |
| -   | 1   | 1           | 1    | 1  | 1320999-3   | APPLICATOR SUBASSEMBLY, HD1     | 46      |             |         |
| -   | 1   | 1           | 1    | 1  | 690191-1    | PLUS, NYLON                     | 45      |             |         |
| -   | 1   | 1           | 1    | 1  | 1338660-1   | RAM                             | 44      |             |         |
| -   | -   | -           | -    | -  | -           | -                               | 43      |             |         |
| -   | -   | -           | -    | -  | -           | -                               | 42      |             |         |
| -   | 1   | 1           | 1    | 1  | 2-18024-6   | SCR, BTN SKT HD CAP 1M6 X 26.0  | 41      |             |         |
| -   | -   | -           | -    | -  | -           | -                               | 40      |             |         |
| -   | 1   | 1           | 1    | 1  | 690125-1    | SHIM SUB-ASSY                   | 39      |             |         |
| -   | 1   | 1           | 1    | 1  | 469367-1    | SHIM                            | 38      |             |         |
| -   | 1   | 1           | 1    | 1  | 879103-2    | FINE ADJUST HEAD ASSEMBLY       | 37      |             |         |
| -   | -   | -           | -    | -  | -           | -                               | 36      |             |         |
| -   | -   | -           | -    | -  | -           | -                               | 35      |             |         |
| -   | 1   | 1           | 1    | 1  | 1320934-4   | SUPPORT, TERMINAL               | 34      |             |         |
| -   | 2   | 2           | 2    | 2  | 1-18024-0   | SCR, BTN SKT HD CAP 1M4 X 20.0  | 33      |             |         |
| -   | 1   | 1           | 1    | 1  | 18027-2     | WASHER, FLAT, REG M4            | 32      |             |         |
| -   | 1   | 1           | 1    | 1  | 1-18023-2   | SCR, SKT HD CAP M4 X 12.0       | 31      |             |         |
| -   | 1   | 1           | 1    | 1  | 1320908-2   | SPACER, STRIP GUIDE             | 30      |             |         |
| -   | 1   | 1           | 1    | 1  | 1635075-2   | STRIP GUIDE ASSEMBLY            | 29      |             |         |
| -   | 1   | 1           | 1    | 1  | 1-455888-5  | SPACER, CRIMPER                 | 28      |             |         |
| -   | 2   | 2           | 2    | 2  | 1-22284-0   | SPRING, COMPRESSION             | 27      |             |         |
| -   | 1   | 1           | 1    | 1  | 356885-1    | LEVER, DRAG RELEASE             | 26      |             |         |
| -   | 1   | 1           | 1    | 1  | 240792-1    | DRAG, TERMINAL                  | 25      |             |         |
| -   | 1   | 1           | 1    | 1  | 1320928-1   | PLATE, STRIP GUIDE              | 24      |             |         |
| -   | 1   | 1           | 1    | 1  | 880371-4    | SCR, SKT HD SHLDR 5.0 DIA X 6.0 | 23      |             |         |
| -   | 1   | 1           | 1    | 1  | 690472-2    | STRIPPER                        | 22      |             |         |
| -   | 1   | 1           | 1    | 1  | 1-18023-1   | SCR, SKT HD CAP M4 X 10.0       | 21      |             |         |
| -   | 4   | 4           | 4    | 4  | 18025-2     | WASHER, SPRNG LOCK, REG M4      | 20      |             |         |
| -   | -   | -           | -    | -  | 690472-1    | STRIPPER                        | 19      |             |         |
| -   | -   | -           | -    | -  | -           | -                               | 18      |             |         |
| -   | 1   | 1           | 1    | 1  | 1338684-1   | SHEAR HOLDER, FRONT             | 17      |             |         |
| -   | -   | -           | -    | -  | -           | -                               | 16      |             |         |
| -   | -   | -           | -    | -  | -           | -                               | 15      |             |         |
| -   | -   | -           | -    | -  | -           | -                               | 14      |             |         |
| -   | -   | -           | -    | -  | -           | -                               | 13      |             |         |
| -   | 1   | 1           | 1    | 1  | 3-22280-3   | SPRING, COMPRESSION             | 12      |             |         |
| -   | 1   | 1           | 1    | 1  | 356885-4    | STOP, SHEAR                     | 11      |             |         |
| -   | 1   | 1           | 1    | 1  | 1320921-1   | SHEAR HOLDER, FRONT, CUT        | 10      |             |         |
| -   | 1   | 1           | 1    | 1  | 454276-1    | FLOATING SHEAR, FRONT           | 9       |             |         |
| -   | 1   | 2           | 2    | 2  | 1-1633133-4 | ANVIL, COMBINATION .100         | 8       |             |         |
| -   | -   | -           | -    | -  | -           | -                               | 7       |             |         |
| -   | -   | -           | -    | -  | -           | -                               | 6       |             |         |
| -   | 1   | 1           | 1    | 1  | 2-455888-0  | DEPRESSOR, SHEAR                | 5       |             |         |
| -   | 1   | 1           | 1    | 1  | 2-238011-2  | BLOCK, CRIMPER SPACER           | 4       |             |         |
| -   | 1   | 2           | 2    | 2  | 8-456134-2  | CRIMPER, INSULATION PREMIUM     | 3       |             |         |
| -   | 1   | 1           | 1    | 1  | 455888-3    | SPACER, CRIMPER                 | 2       |             |         |
| -   | 1   | 2           | 2    | 2  | 2-456407-2  | CRIMPER, WIRE PREMIUM           | 1       |             |         |
| -77 | -76 | -72         | -71  | -6 | -2          | -1                              | PART NO | DESCRIPTION | ITEM NO |