

MADE IN THIRD ANGLE PROJECTION

3

2

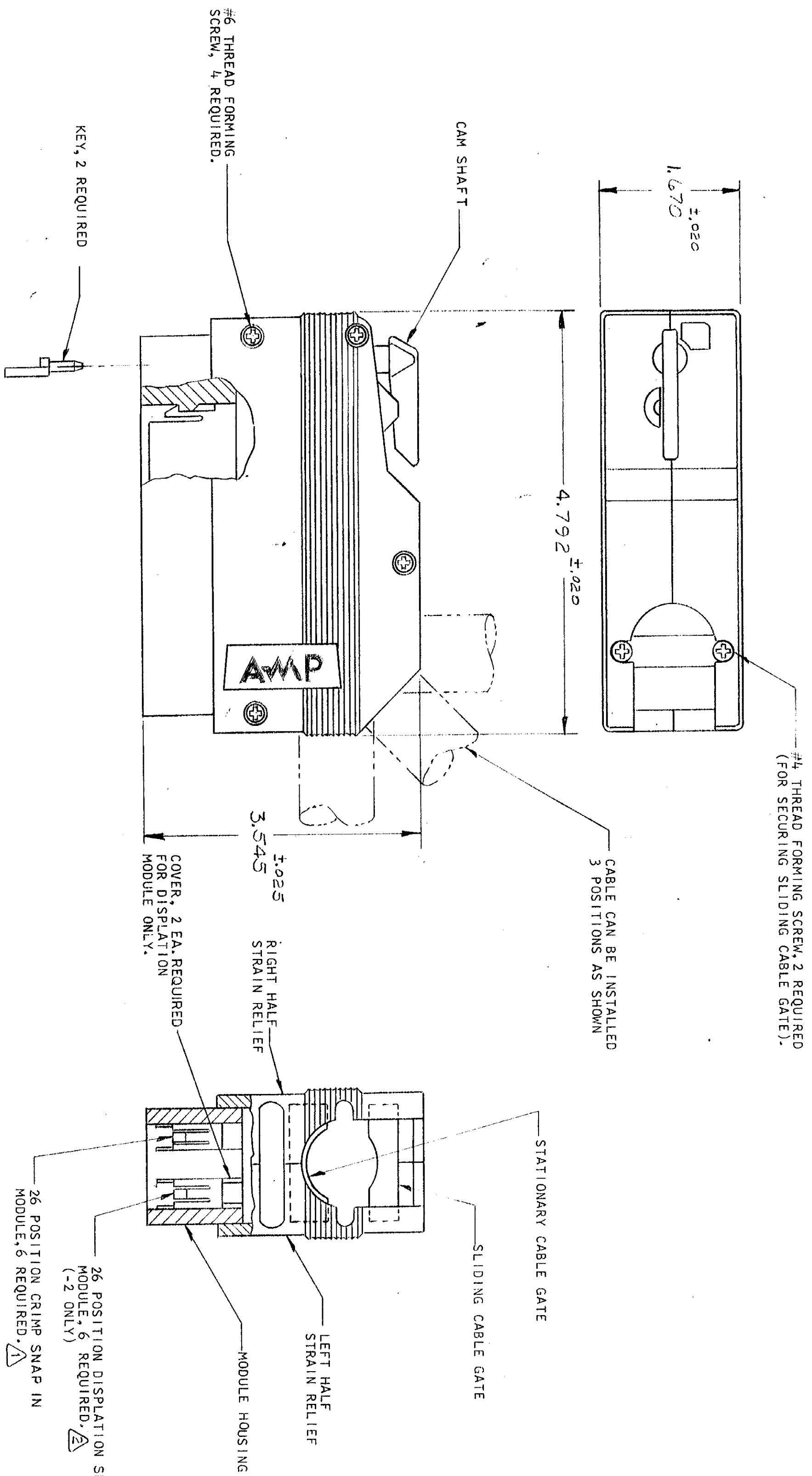
1

Loc DIST  
R 39

© COPYRIGHT 1975 BY AMP INCORPORATED, HARRISBURG, PA.  
ALL INTERNATIONAL RIGHTS RESERVED. AMP INCORPORATED PRODUCTS  
COVERED BY U. S. AND FOREIGN PATENTS AND/OR PATENTS PENDING.  
UNLESS OTHERWISE SPECIFIED, ALL DIMENSIONS ARE IN INCHES.  
UNLESS OTHERWISE SPECIFIED, ALL DIMENSIONS ARE IN INCHES.

- 207228-1  
207228-2
1. AS SHOWN, 26 POSITION CRIMP MODULES.
  2. WITH 6-26 POSITION DISPLATION MODULES.
  1. SAME AS -1 EXCEPT: 26 POSITION CRIMP MODULES.
  2. WITH 6-26 POSITION DISPLATION MODULES.

REVISIONS			
P	F	ZONE	LTR
1	1	1	1
2	2	2	2
3	3	3	3
4	4	4	4
5	5	5	5
6	6	6	6
7	7	7	7
8	8	8	8
9	9	9	9
10	10	10	10
11	11	11	11
12	12	12	12
13	13	13	13
14	14	14	14
15	15	15	15
16	16	16	16
17	17	17	17
18	18	18	18
19	19	19	19
20	20	20	20
21	21	21	21
22	22	22	22
23	23	23	23
24	24	24	24
25	25	25	25
26	26	26	26
27	27	27	27
28	28	28	28
29	29	29	29
30	30	30	30



1. 26 POSITION CRIMP MODULES ACCEPT "F" CRIMPED CONTACTS, (CONTACTS NOT SUPPLIED, MUST BE ORDERED SEPARATELY).
2. 26 POSITION DISPLATION MODULES ARE SUPPLIED WITH CONTACTS. MATERIAL-ALL PARTS: GLASS FILLED BLACK THERMOPLASTIC.
3. ALL ASSY SCREWS ARE STEEL, ZINC PLATED.

UNLESS OTHERWISE SPECIFIED DIMENSIONS ARE IN INCHES. TOLERANCES ON: DECIMALS # ANGLES #		CONTRACT NO		NAME	
MATERIAL		DR		CABLE KIT, SIZE II, 156 POSITION, ZEPD ENTRY CONN., SERIES "CR"	
FINISH		CHK		SIZE CODE IDENT NO	
OTHER APPD		APPD		DRAWING NO	
		DSGN APPD		207228	
		OTHER APPD		SCALE	
				SHEET 1 OF 1	