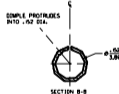
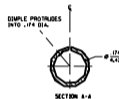
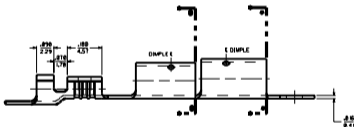
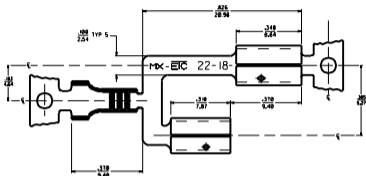


PART NUMBER	DESCRIPTION	FINISH
19723-4000	WITH DIMPLES	PLATED
19723-4001	WITHOUT DIMPLES	
19723-4002	WITH DIMPLES	UNPLATED
19723-4005	WITHOUT DIMPLES	



NOTES:
 1. MATERIAL: C26000 BRASS
 2. FINISH: F2N PLATED

CUSTOMER DRAWING

REVISIONS	
1	RELEASE FOR CONCEPT ESTIMATE 6/26/24

REVISIONS	
1	REVISE ONLY ON CAD SYSTEM

DATE: 06/26/24	BY: RWD	CHK: RWD
DATE: 06/13/24	BY: RWD	CHK: RWD
DATE: 08/25/23	BY: RWD	CHK: RWD

ETC INC. FEDERAL INDUSTRIES, LTD. 1000 W. 12th St. Grand Rapids, MI 49507-1000 TEL: (616) 235-1000 FAX: (616) 235-1001	REVISE ONLY ON CAD SYSTEM KRYPTITE DOUBLE FEMALE BULLET RECEPTACLE .156 & .180 DIA 22-18 AWC PART NO. 19723-4000 DATE: 06/26/24 SEE CHART C 19725-40**
--	--