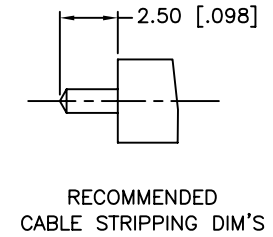
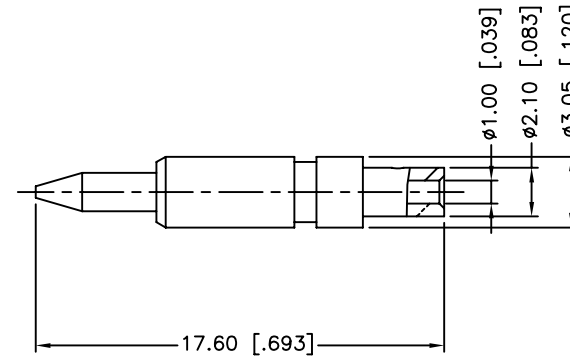
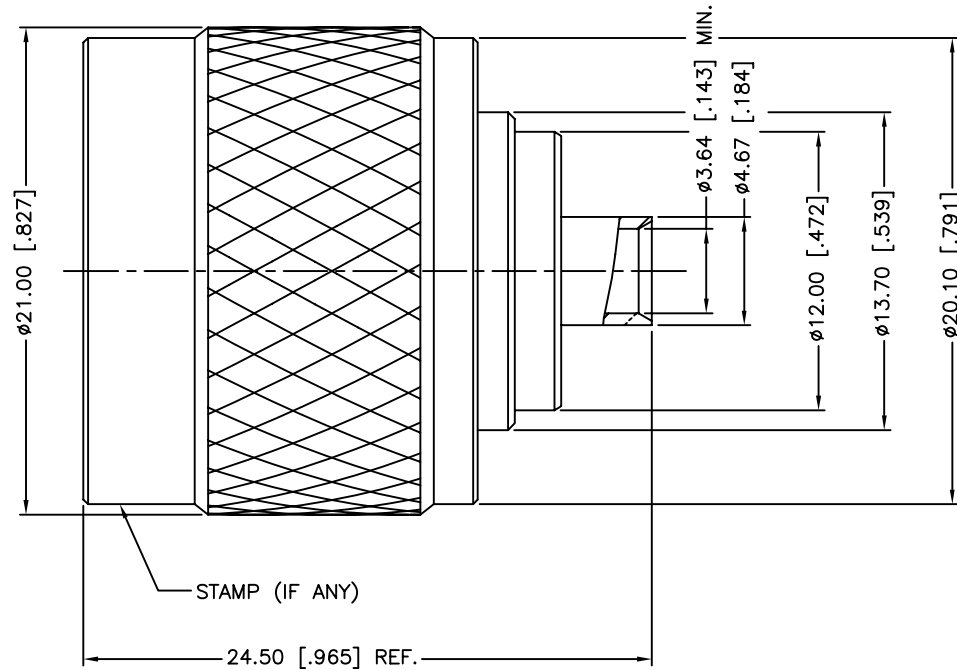


REV.	DATE	ECR NO.	DESCRIPTION
A	04/31/03	-	UPDATE DRAWING FORMAT
B	05/06/10	2052	ADD THE MISSING DIMENSIONS TO THE DRAWING



NOTE:
1. CRIMPED CONTACT PIN
HEX. CRIMP SIZE .068"

3	CONTACT PIN	BRASS	GOLD	1
2	INSULATOR	PTFE	NATURAL	1
1	BODY	BRASS	NEXCOTE	1
DESCRIPTION	MATERIAL	FINISH	QTY	

UNLESS OTHERWISE SPECIFIED DIMENSIONS ARE IN MILLIMETERS. DIMENSIONS IN [] ARE IN INCHES AND FOR CUSTOMER REFERENCE ONLY.

UNLESS OTHERWISE SPECIFIED TOLERANCES FOR MILLIMETERS ARE:
0.5 - 8mm ± 0.20mm
8 - 30mm ± 0.40mm
30 - 120mm ± 0.50mm

UNLESS OTHERWISE SPECIFIED TOLERANCES FOR INCHES ARE:
.020 - .315 = ± 0.007"
.315 - 1.180 = ± 0.015"
1.180 - 4.724 = ± 0.020"

DO NOT SCALE DRAWING

APPROVALS	DATE
DRAWN M.ZHANG	05/06/10
CHECKED	
ISSUED	
SHEET 1 OF 1	
CAD FILE	C:/CONNEX/172133.DWG

Amphenol Connex

PART DESCRIPTION

N DIRECT SOLDER PLUG
(FOR .141" SEMI-RIGID CABLE)

PART NO.

172133

DWG. NO.

172133.DWG

REV. B

SIZE A

SCALE NA