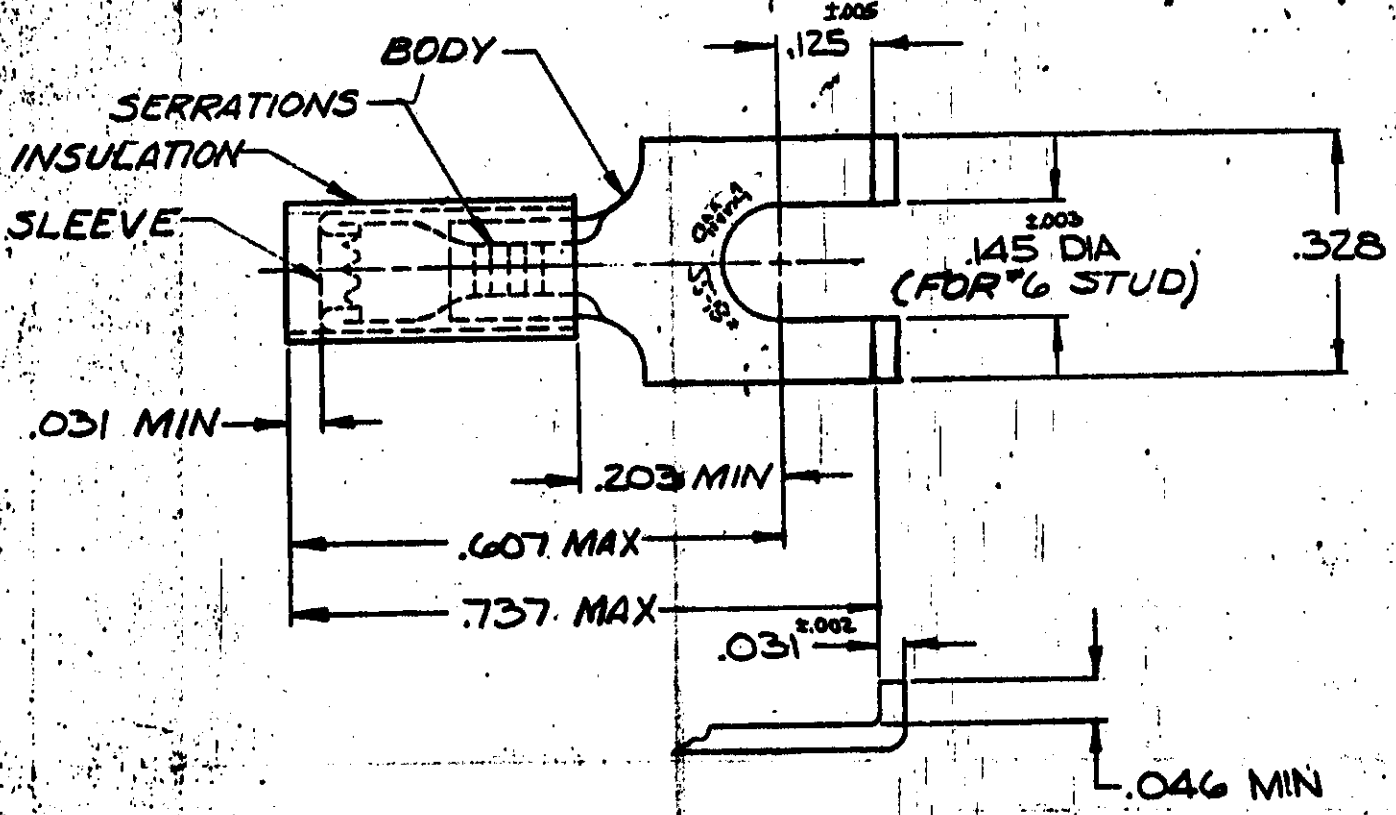


DRAWING MADE IN AMERICAN PROJECTION

© 1957 BY AMP INCORPORATED. ALL RIGHTS RESERVED. AMP PRODUCTS COVERED BY PATENTS AND/OR PATENTS PENDING.


REVISIONS			
LTR	DESCRIPTION	DATE	APPROVED
B	REDRAWN & ADDED TAPE NO'S R608 & R609	1-15-70	FCY
C	REV PER G-4732	JT 7/22/88	
D	REV PER G-5411	OKS 3/89	



FOR .105 TO .140 WIRE INS DIA
MARKING 22-18 FOR MILITARY
COMMERCIAL RANGE 22-16

1	324557 ON TAPE	2-324557-1	SLEEVE: COPPER (QQ-C-576) BODY: COPPER (QQ-C-576) TIN PL (MIL-T-10727)
1	WIRE TERMINAL	324557	INSULATION: NYLON COLOR: RED

QTY DESCRIPTION PART NO MATERIAL & FINISH

UNLESS OTHERWISE SPECIFIED DIMENSIONS ARE IN INCHES TOLERANCES ON: DECIMALS ±.008 ANGLES ± 5°	CONTRACT NO. —	 AMP INCORPORATED HARRISBURG, PENNSYLVANIA
	DR. <i>J. Epley</i> 1-14-70	
	CHK. <i>R. Young</i> 1-15-70	
	APPD. <i>Swibel</i> 1-16-70	
	REL. <i>R. Young</i> 1-20-70	
MATERIAL	NAME	WIRE TERMINAL
SEE TABLE		P.I.D.G. - FLANGED SPADE
		WIRE SIZE: 22-16
OTHER APPD	SIZE	CODE IDENT NO.
	A	00779
	NUMBER	1
		324557
SCALE	NTS	SHEET
		1 OF 1