

MATERIALS AND FINISHES :

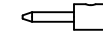
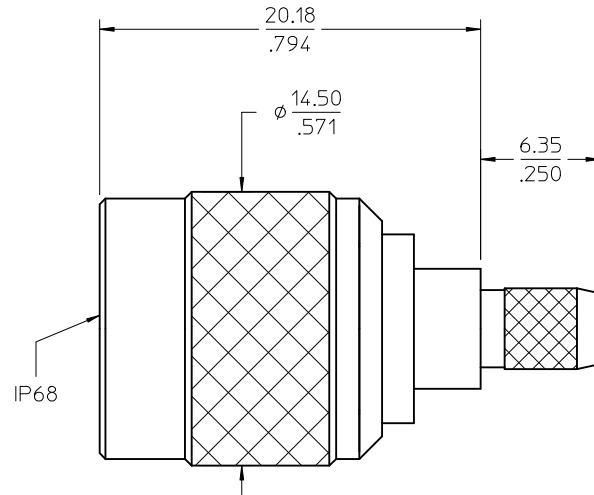
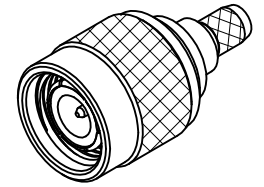
BODY, COUPLING NUT, CRIMP TUBE BRASS
PLATED NICKEL

CONTACT BERYLLIUM COPPER
PLATED GOLD (SEE TABLE)

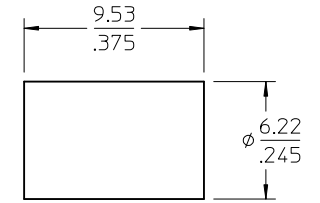
CABLE CONTACT BRASS
PLATED GOLD

INSULATOR TEFLON

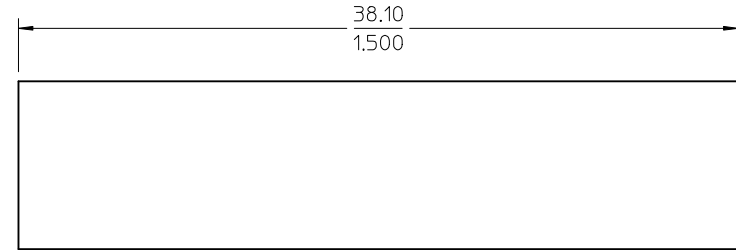
SHRINK TUBE ATUM OR EQUIVALENT



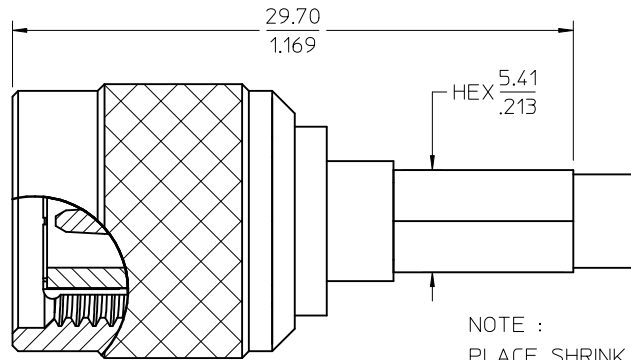
CONTACT



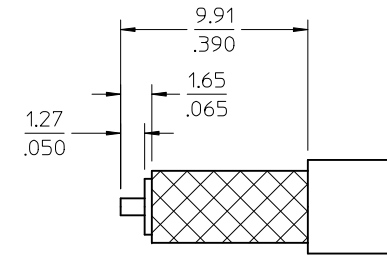
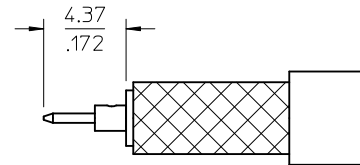
CRIMP TUBE



SHRINK TUBE



NOTE :
PLACE SHRINK TUBE
ONTO CABLE PRIOR
TO INSERTION IN BODY



RECOMMENDED CABLE STRIP
DIMENSIONS

MIL-STD-348A, FIG. 313.1	INTERFACE
SPECIFICATION	DESCRIPTION

73216-1982	10u"	ONE PER BAG
73216-1981	10u"	BULK
73216-1980	30u"	BULK
PART NO.	CONTACT PLTG	PACKAGING

CHG: ADD 73216-1982

EC NO: 2012/01/30
DRWN:JIENER 2012/01/30
CHKD:SSS 2012/01/30
APPR:JIENER 2012/01/31

REV DESCRIPTION

QUALITY SYMBOLS
▽=0
▽=0

GENERAL TOLERANCES (UNLESS SPECIFIED)

	mm	INCH
4 PLACES	± .005	± .0005
3 PLACES	± .005	± .0005
2 PLACES	± .005	± .0005
1 PLACE	± .005	± .0005

ANGULAR ± 2 °

DRAFT WHERE APPLICABLE
MUST REMAIN
WITHIN DIMENSIONS

DIMENSION STYLE
MM/IN

DRAWN BY	DATE
AZR	2008/12/01
CHECKED BY	DATE
SSS	2008/12/01
APPROVED BY	DATE
JDW	2008/12/01

MATERIAL NO.
SEE NOTE

SIZE
C

SCALE
DESIGN UNITS
METRIC

THIRD ANGLE PROJECTION

TITLE
**TNC PLUG STRAIGHT IP68
FOR RG58 50 OHMS
TNC-PC, EWR-3829**

MOLEX MOLEX INCORPORATED

DOCUMENT NO.
SD-73216-198

SHEET NO.
1 OF 1

THIS DRAWING CONTAINS INFORMATION THAT IS PROPRIETARY TO MOLEX
INCORPORATED AND SHOULD NOT BE USED WITHOUT WRITTEN PERMISSION