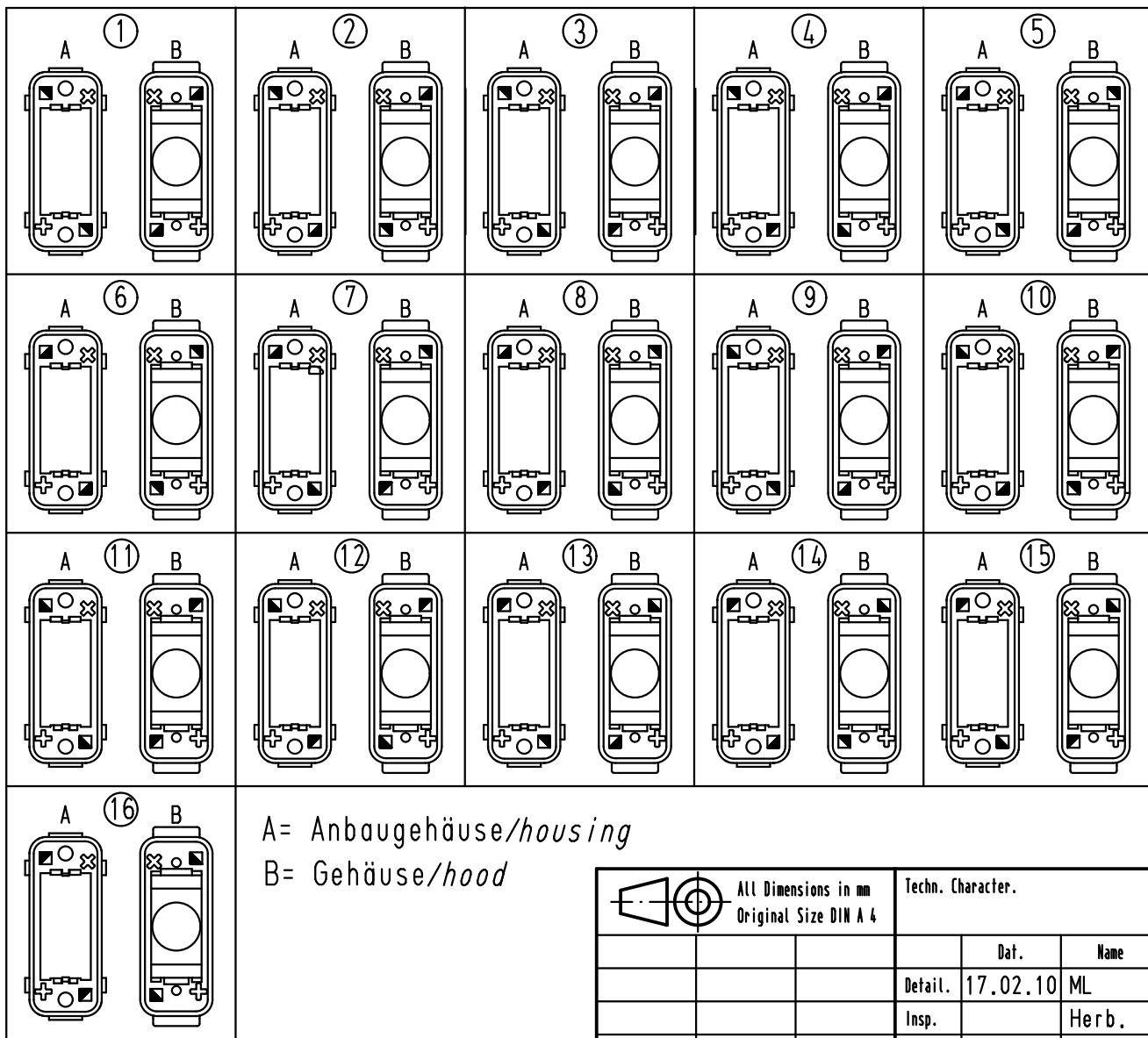
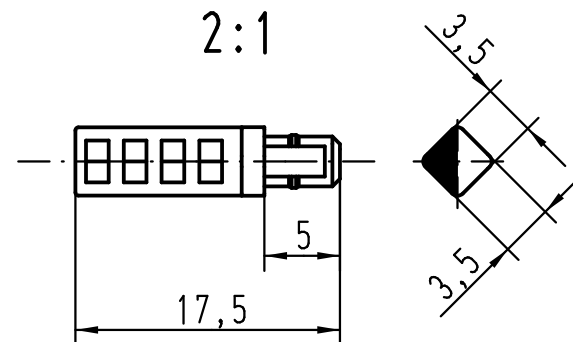


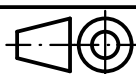
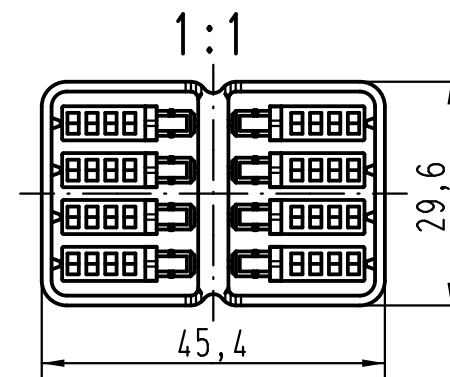
Kodiermöglichkeiten/coding possibilities



A= Anbaugehäuse/housing
B= Gehäuse/hood



Lieferform/kind of delivery



All Dimensions in mm
Original Size DIN A 4

Techn. Character.

Nicht tolerierte Maß/Free size tolerances

		Dat.	Name	Maßstab/Scale
Detail.		17.02.10	ML	
Insp.			Herb.	
Stand.				

2:1

Kodierstift/coding pin
Han Modular ECO

Mod.	Dat.	Name
A		

HARTING Electric GmbH & Co. KG
D-32339 Espelkamp



TB 09 14 000 9929

Blatt/page

Sub.