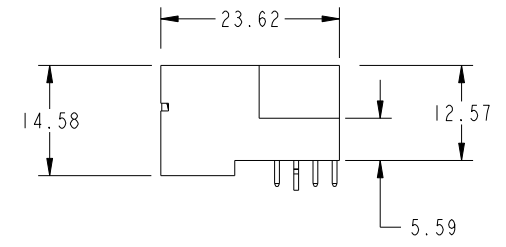
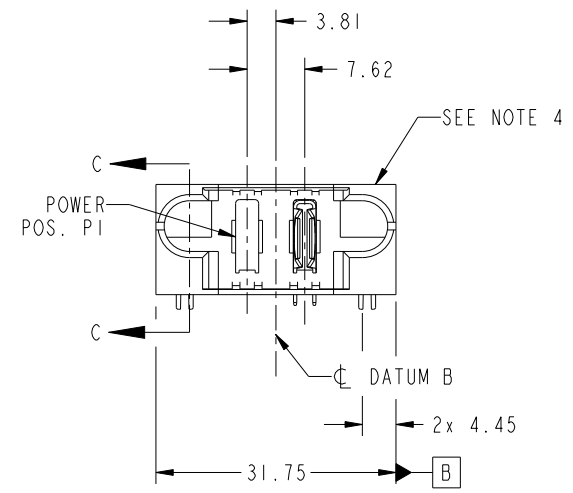


PRODUCT NO.	POWER			
	E1	P1	P2	E2
51939-936-- NOTE 3		X	PA	



CODE	DIM "M" MATING LENGTH	CONTACT TYPE
PA	[N/A]	POWER
HA	[N/A]	HOLD-DOWN
X	OMITTED	OMITTED

spec ref	*	dr	Luo Weller	2014/11/19	projection	MM	size	A4	scale	1:1	
tolerance std	TOLERANCES UNLESS OTHERWISE SPECIFIED	eng	Luo Weller	2014/12/17			ecn no	-			
surface	✓	chr	-	-	product family			PwrBlade	rel level	Released	
	linear	0.X	±0.5		title	2ACP	dwg no	51939-936	rev	A	
		0.XX	±0.25								
		0.XXX	±0.1								
	angular	0°	±2°	www.fci.com	cat. no.	&model_name	Product - Customer Drw		sheet 1 of 4		

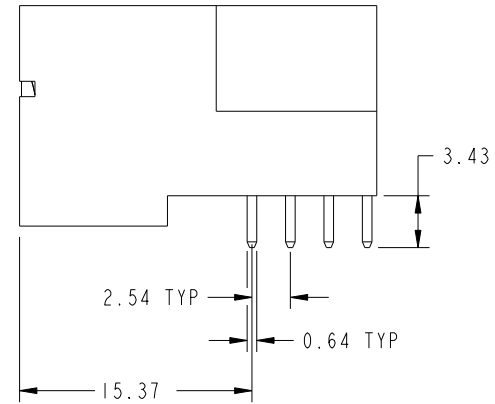
ProjE File - REV C - 2009-06-09



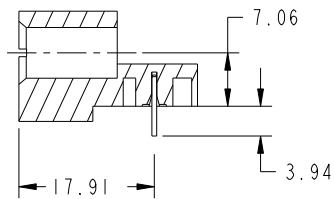
Copyright FCI.

PRODUCT NUMBER

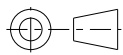
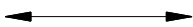

51939-936--
NOTE: 3



SCALE 2:1



SECTION C-C

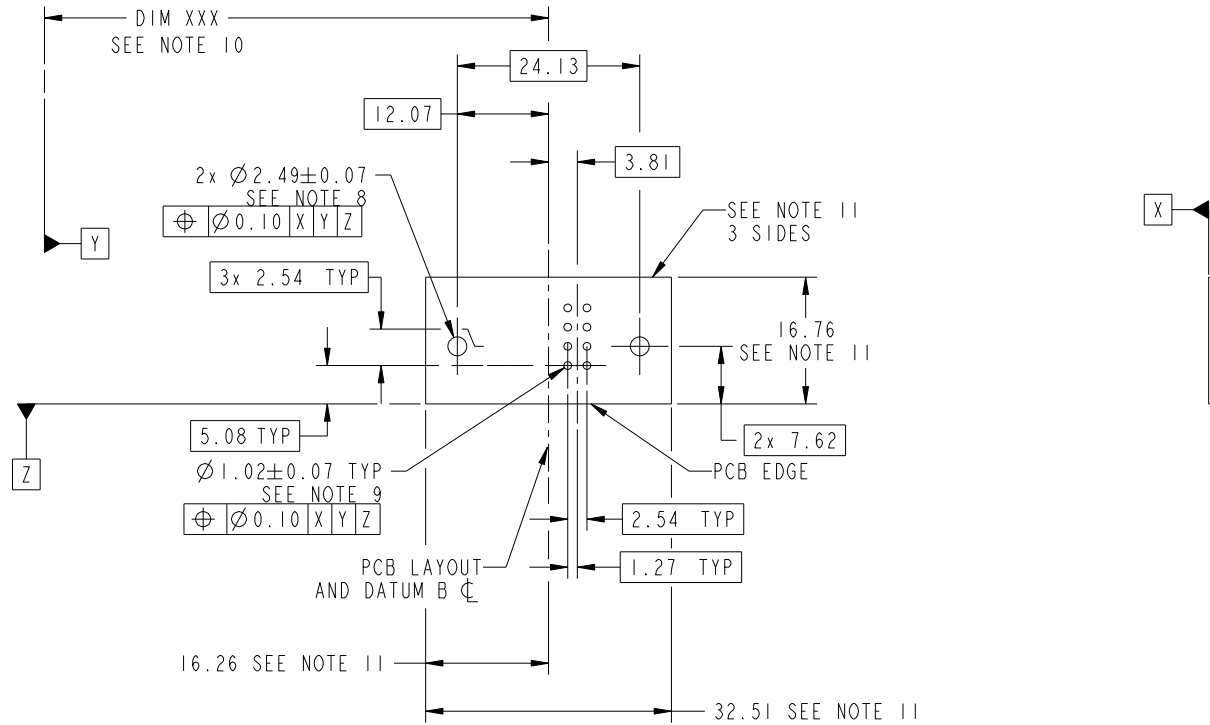
dr	Luo Weller	2014/11/19	projection 	MM 	size	A4	scale	1:1	
eng	Luo Weller	2014/12/17			ecn no	-			
chr	-	-							
appr	Pei-Ming Zheng	2014/12/17	product family	PwrBlade	rel level	Released			
		title	2ACP RIGHT ANGLE STB HEADER		dwg no	51939-936		rev	A
www.fci.com	cat. no.	&model_name	Product - Customer Drw			sheet 2 of 4			



Copyright FCI.

PRODUCT NUMBER

51939-936--
NOTE: 3



RECOMMENDED PCB LAYOUT

dr	Luo Weller	2014/11/19	projection 	MM 	size	A4	scale	1:1
eng	Luo Weller	2014/12/17			ecn no	-		
chr	-	-			rel level	Released		
appr	Pei-Ming Zheng	2014/12/17	product family	PwrBlade	rev	51939-936	A	
		title	2ACP RIGHT ANGLE STB HEADER		dwg no	51939-936		
www.fci.com	cat. no.	&model_name	Product - Customer Drw		sheet 3 of 4			

PRODUCT NUMBER
51939-936__
NOTE: 3

NOTES:

1. DIMENSIONS AND TOLERANCES ARE IN ACCORDANCE WITH ASME Y14.5M, 1994 UNLESS OTHERWISE SPECIFIED.

CONNECTOR NOTES:

- 2. HOUSING MATERIAL: UL 94 V-0 GLASS FILLED HIGH-TEMP THERMOPLASTIC
POWER CONTACT MATERIAL: COPPER ALLOY
SIGNAL PIN MATERIAL: COPPER ALLOY
 - 3. SEE ITEM 3 & 4 IN PRINT 10064183 FOR PLATING SPEC OF 51939-936 AND 51939-936LF RESPECTIVELY.
 - 4. MANUFACTURER'S NAME, P/N, AND DATE CODE TO APPEAR ON THIS SURFACE.
 - 5. PRODUCT SPECIFICATION GS-12-149.
APPLICATION SPECIFICATION BUS-20-067.
 - 6. PACKAGED IN TRAYS.
- PCB NOTES:
- 7. ALL HOLE DIAMETERS ARE FINISHED HOLE SIZE.
 - 8. MOUNTING HOLES, WHERE APPLICABLE, ARE UNPLATED.
 - 9. $\varnothing 1.151 \pm 0.025$ DRILLED HOLES PLATED WITH
0.008 MIN SnPb OR Sn OVER 0.03
TO 0.08 Cu PLATING TO ACHIEVE
 $\varnothing 1.02 \pm .07$ HOLE.
 - 10. "DIM XXX" TO BE DETERMINED BY THE CUSTOMER.
 - 11. CONNECTOR KEEP-OUT ZONE.



Copyright FCI.

dr	Luo Weller	2014/11/19	projection 	MM 	size	A4	scale	1:1			
eng	Luo Weller	2014/12/17			ecn no	-					
chr	-	-			product family	PwrBlade	rel level	Released			
appr	Pei-Ming Zheng	2014/12/17			title	2ACP		dwg no	51939-936	rev	A
www.fci.com		cat. no.	&model_name		Product - Customer Drw			sheet 4 of 4			