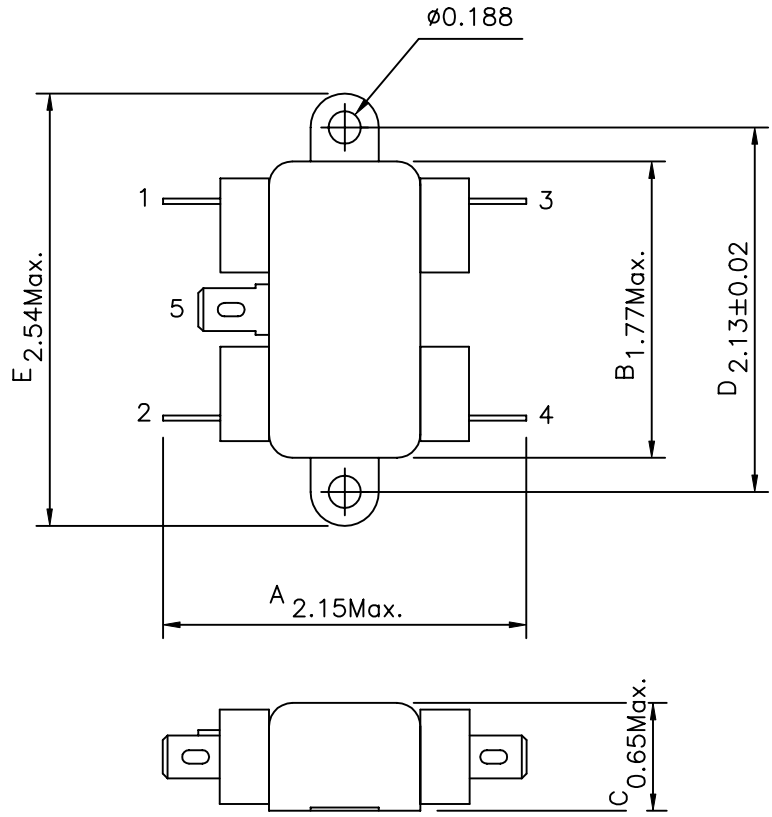


Revision			
Rev.	Description	Date	Approved

PHYSICAL DIMENSIONS:



1. ELECTRICAL CHARACTERISTICS:

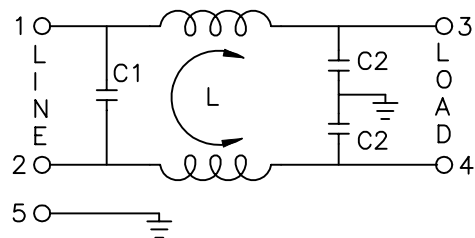
- 1-1. VOLTAGE RATING 115/250VAC
- 1-2. CURRENT RATING
 - A. AT 115VAC 2 A RMS Max.
 - B. AT 250VAC 2 A RMS Max.
- 1-3. OPERATING FREQUENCY..... 50/60 Hz
- 1-4. LEAKAGE CURRENT: EACH LINE TO GROUND
 - A. @115VAC 60Hz 0.25 mA Max.
 - B. @250VAC 50Hz 0.45 mA Max.
- 1-5. HIPOT RATING (FOR ONE MINUTE)
 - A. LINE TO GROUND 2250VDC
 - B. LINE TO LINE 1450VDC
- 1-6. TEMPERATURE RANGE: -25 TO +85 DEGREE C
- 1-7. MINIMUM INSERTION LOSS IN dB: (AT 50 OHM SYSTEM)

FREQ. MHz	.01	.05	.10	.15	.50	1.0	5.0	10	30
COM. MODE dB	/	/	/	15	30	38	45	45	40
DIF. MODE dB	/	/	/	6	15	20	40	45	45

1-8. SAFETY



SCHEMATIC:



L: 1.1mH
 C1: 0.1uF
 C2: 3300pF

Dim range (mm)	Tolerance +/- (mm)	Qualtek Electronics Corp. PPC DIVISION		
		Part Number: 851-02/001		
0-1	0.15	Description: EMI FILTER		
1-6	0.20	UNIT: INCH		
6-18	0.30			
18-50	0.50	Drawn/Date	Checked/Date	Approved/Date
50-120	0.70	B.ZHANG	02-11-03	JJH/02-11-03
120-250	0.90	02-11-03		
250-500	1.20			