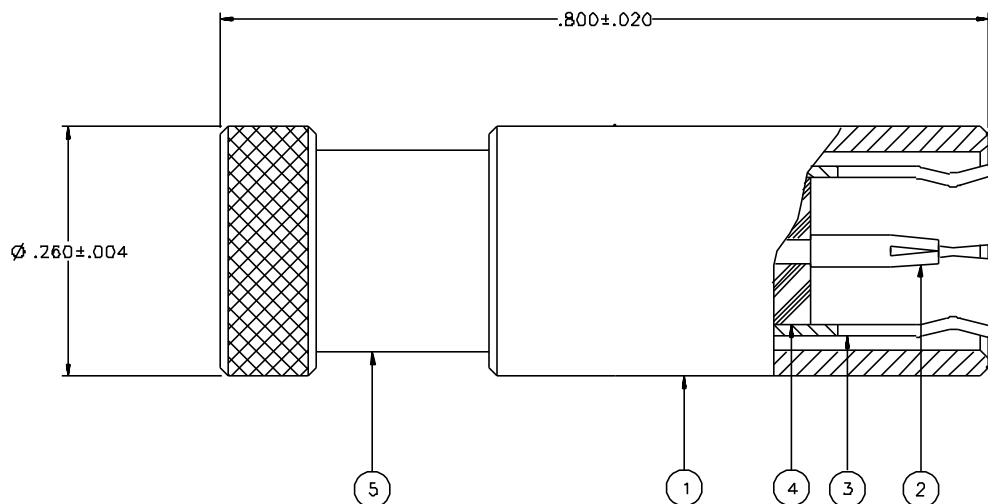


PART NUMBER	ITEM ① BODY	ITEM ② CONTACT	ITEM ③ INTERFACE	ITEM ④ INSULATOR	ITEM ⑤ REAR BODY
131-BBD1-821	BRASS GOLD PL .00001 MIN OVER NICKEL PL .00005 MIN OVER COPPER PL .00005 MIN	BERYLLIUM COPPER GOLD PL .00003 MIN OVER NICKEL PL .00005 MIN OVER COPPER PL .00005 MIN	BERYLLIUM COPPER GOLD PL .00003 MIN OVER NICKEL PL .00005 MIN OVER COPPER PL .00005 MIN	TEFLON	BRASS GOLD PL .00001 MIN OVER NICKEL PL .00005 MIN OVER COPPER PL .00005 MIN
131-BBD1-826	BRASS NICKEL PL .0001 MIN OVER COPPER PL .00005 MIN	BERYLLIUM COPPER GOLD PL .00003 MIN OVER NICKEL PL .00005 MIN OVER COPPER PL .00005 MIN	BERYLLIUM COPPER NICKEL PL .0001 MIN OVER COPPER PL .00005 MIN	TEFLON	BRASS NICKEL PL .0001 MIN OVER COPPER PL .00005 MIN



NOTES:

1. SPECIFICATIONS:

IMPEDANCE: 75 OHMS  
FREQUENCY RANGE: 0-2 GHZ

ELECTRICAL LENGTH: .. 1.5 DEGREES PHASE SHIFT RELATIVE TO NOMINAL  
.. 5.2 DEGREES PHASE SHIFT RELATIVE TO SHORT

CONTACT RESISTANCE:

CENTER CONTACT - 6 MILLIOHM MAX  
OUTER CONDUCTOR - GOLD PLATED 1 MILLIOHM MAX  
NICKEL PLATED 2.5 MILLIOHM MAX

MECHANICAL:

ENGAGE/DISENGAGE FORCE: INITIAL 14 LBS MAX, AFTER DURABILITY 14 LBS MAX  
ENGAGEMENT/2 LBS MIN DISENGAGEMENT

CONTACT RETENTION: 4 LBS MIN AXIAL FORCE  
DURABILITY: 500 CYCLES MIN

ENVIRONMENTAL:

OPERATING TEMPERATURE: +20 DEG C TO +26 DEG C  
STORAGE TEMPERATURE: -65 DEG C TO +165 DEG C


DRAWING NO.	
C - 131-8801-821/830	
0	REVISIONS
ENGINEERING RELEASE	
1	6-29-91 R V B H 7-90-91
CHANGED: UPDATED GRAPHICS	
2	11-26-96 R S A R ECN 44405

CUSTOMER DRAWING

THIS DRAWING TO BE INTERPRETED  
PER ANSI Y 14.5M - 1982

"µSTATION"

COMPANY CONFIDENTIAL

TOLERANCE UNLESS OTHERWISE SPECIFIED	DRAWN BY	DATE	 Cinch Connectivity Solutions 299 Johnson Ave. Ste. 100 Waseca, MN 56093 1-800-247-8256
	VET	1-8-91	
DECIMALS	CHECKED BY	DATE	TITLE ASSEMBLY, PLUG OPEN MINI 75 OHM SMB
.XX	VET	7-2-91	
WATL	APPROVED BY	DATE	CODE NO.
	TAK/RJB	7-8-91	
FINSH	RELEASE DATE	7-19-91	DRAWING NO. C - 131-8801-821/830
SCALE 10:1			U/M INCH SHEET 2 OF 2