

DETAILS

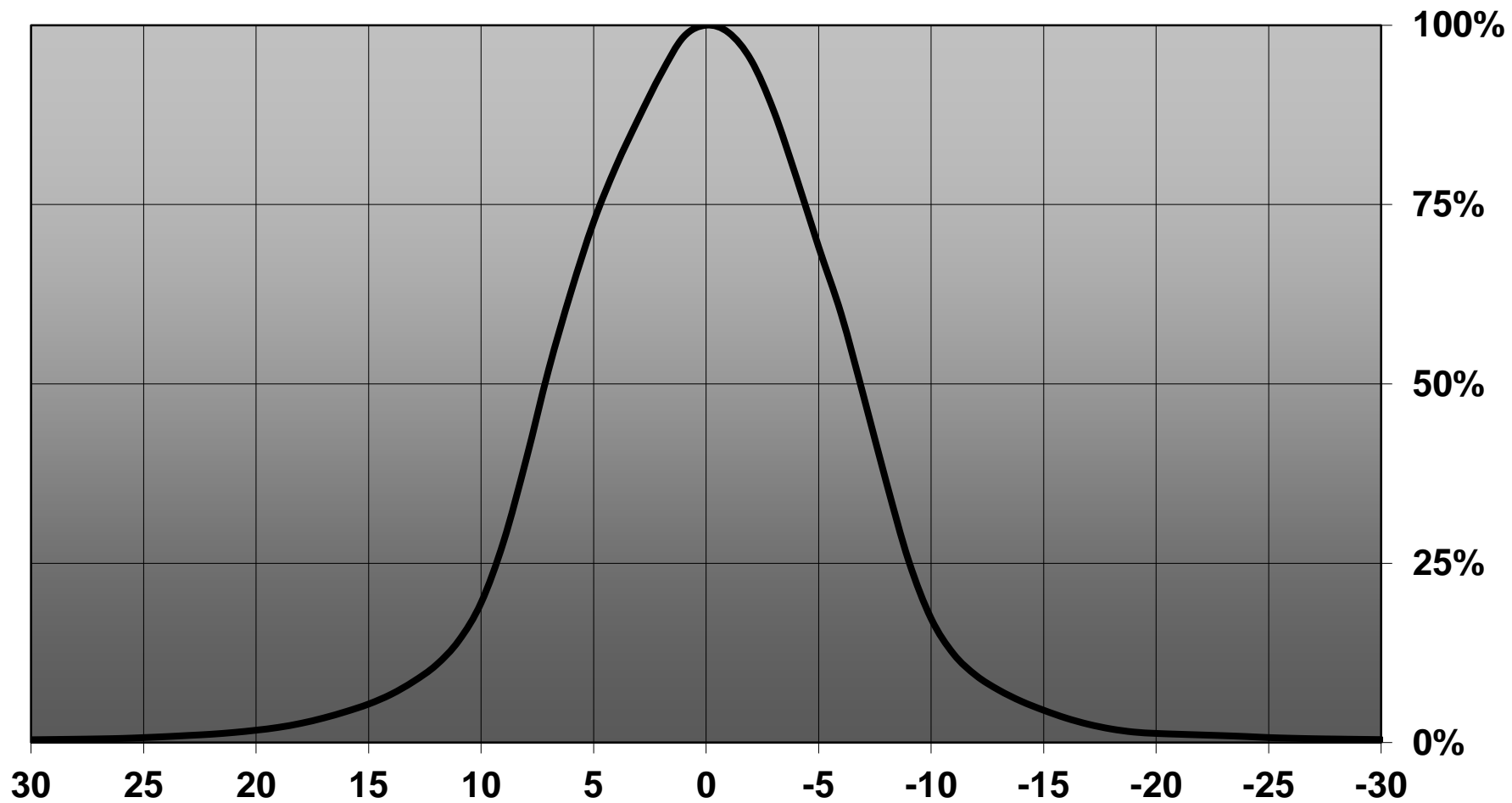
Product Number	C14541_HB-2X2-RS
Family	HB
Type	Lens array
Color	clear
Diameter	50 x 50 mm
Height	10 mm
Style	rectang
Optic Material	PMMA
Holder Material	
Fastening	screw
Status	production ready
ROHS Compliant	Yes
Date Updated	3/01/2017



OPTICAL PROPERTIES

LED	Viewing	Light	Effi-		Connector
	Angle	Beam	ciency	cd/lm	
XM-L2	sim: 18	Real spot	sim: 95 %	sim: 6.900	-
XP-G2	14 deg	Real spot	94 %	11.800	-
XP-G	sim: 13	Real spot	sim: 93 %	sim: 12.100-	
XM-L	sim: 19	Real spot	sim: 92 %	sim: 5.620	-
XP-E2	10 deg	Real spot	94 %	22.100	-
XHP35 HD	sim: 20	Real spot	sim: 91 %	sim: 5.100	-
XHP35 HI	sim: 14	Real spot	sim: 93 %	sim: 9.900	-
NWSx229A	23 deg	Real spot	94 %	4.500	-
NVSxx19B/NVSxx19C	17 deg	Real spot	93 %	8.000	-
NVSW3x9A	19 deg	Real spot	94 %	6.600	-
NVSxE21A	11 deg	Real spot	89 %	11.100	-
Oslon Square Gen3	15 deg	Real spot	90 %	11.000	-
Fortimo FastFlex LED board 2x8 DA G4	13 deg	Real spot	93 %	12.500	-
LH351B	17 deg	Real spot	89 %	8.040	-
LH351D	22 deg	Real spot	94 %	4.900	-
LH351C	18 deg	Real spot	94 %	7.900	-
Z5M1/Z5M2	sim: 13	Real spot	sim: 92 %	sim: 12.100-	
Z8Y22P	16 deg	Real spot	93 %	6.900	-
RLE G1 49x223mm 4000lm xxx EXC OTD3 deg		Real spot	94 %	10.900	-
RLE G1 49x245mm 4000lm xxx EXC OTD3 deg		Real spot	94 %	10.900	-
RLE G1 49x121mm 2000lm xxx EXC OTD3 deg		Real spot	94 %	10.900	-
RLE G1 49x133mm 2000lm xxx EXC OTD3 deg		Real spot	94 %	10.900	-

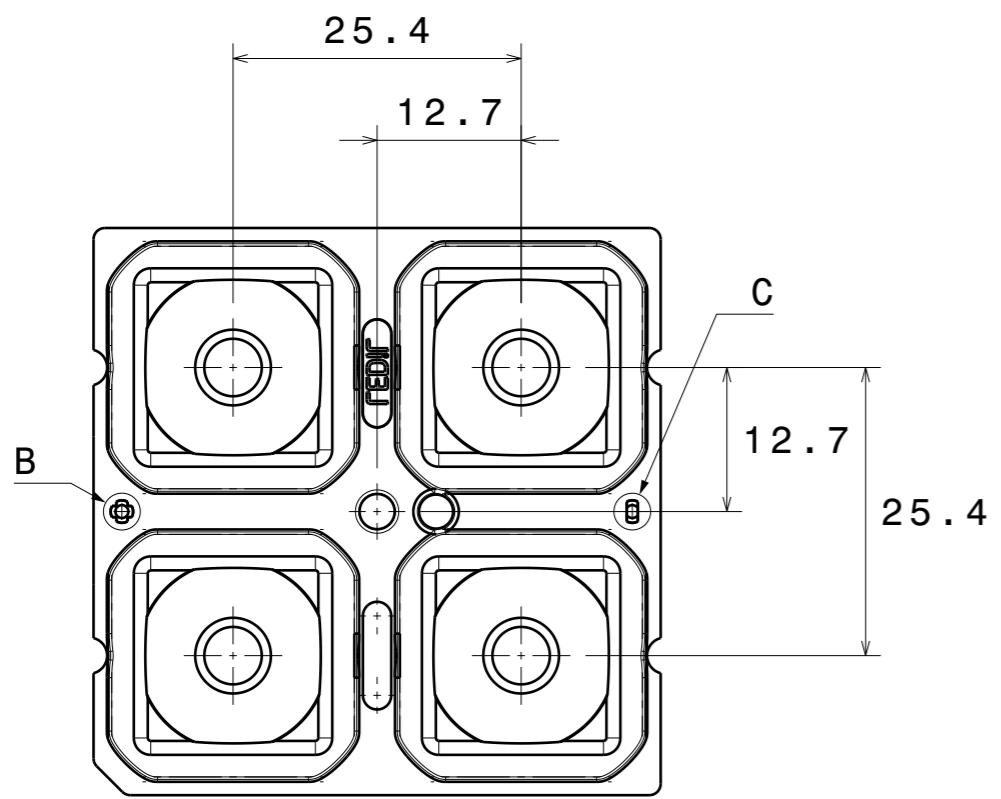
Relative intensity of C14541_HB-2X2-RS_(XP-G2)



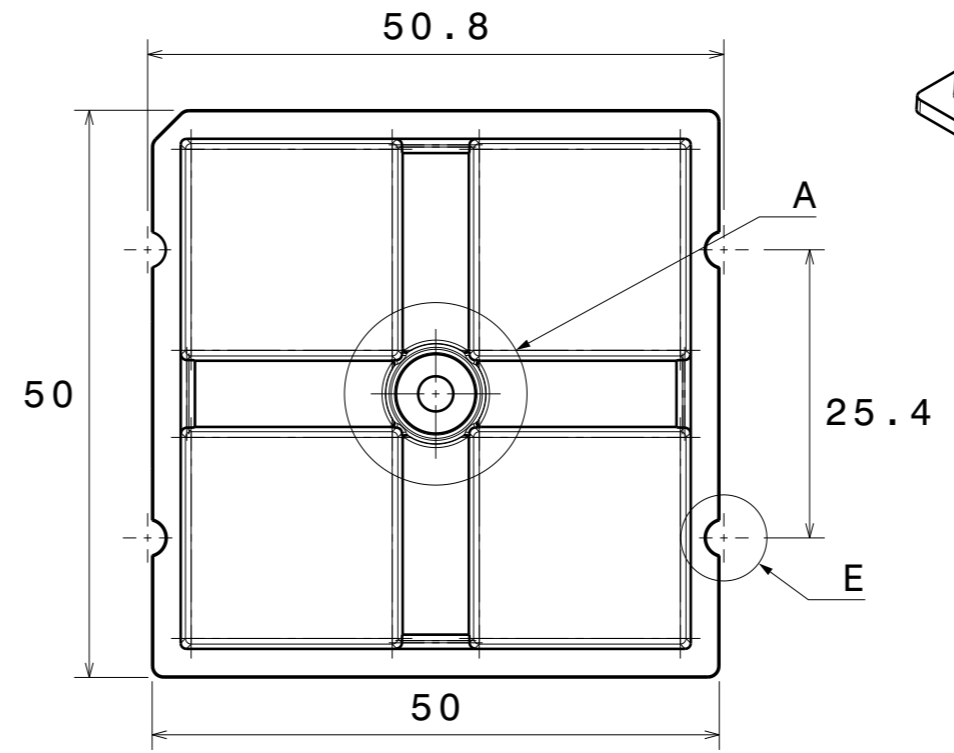
H G F E D C B A

4

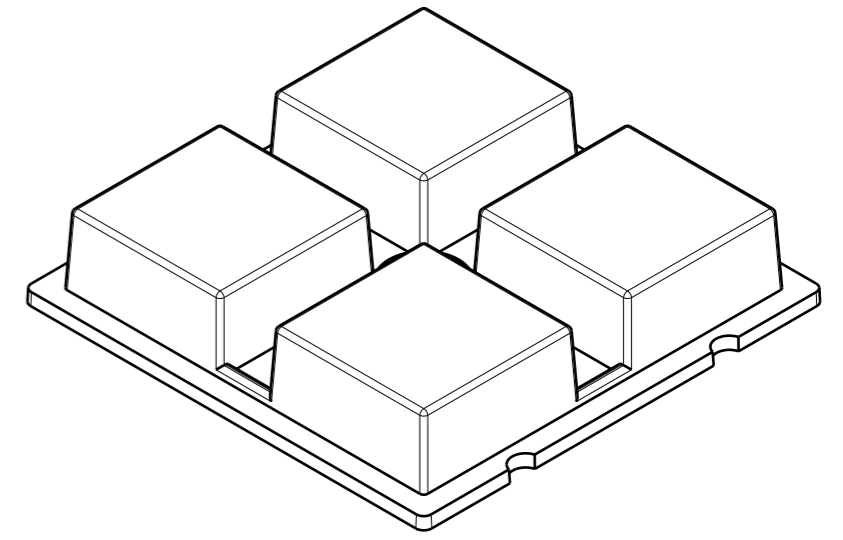
4



Bottom view



Top view



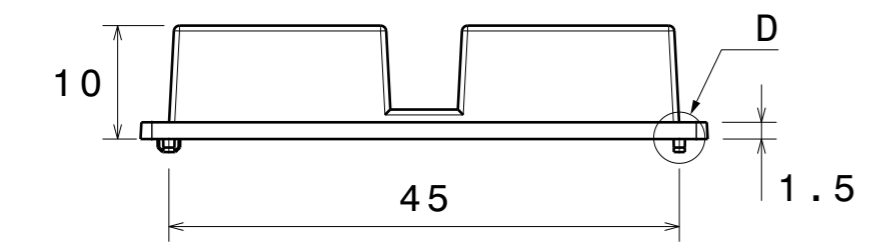
Isometric view

3

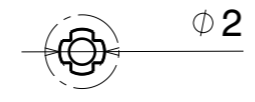
3

2

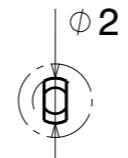
2



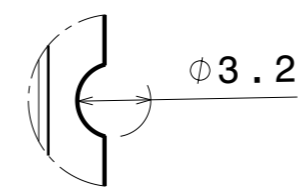
Front view



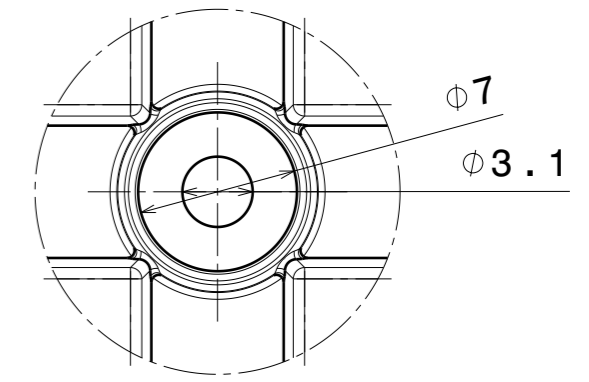
Detail B



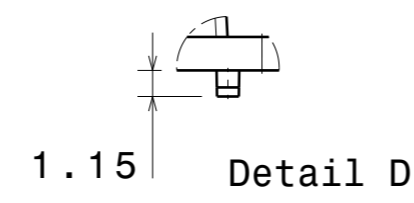
Detail C



Detail E



Detail A



Detail D

Tolerances if not otherwise shown
 According to DIN ISO 2768-1
 Linear measures:
 up to 30mm class M, otherwise class C
 According to DIN ISO 2768-2
 Form and position: class L

LEDiL LediL Oy
 Salorankatu 10
 FIN 24240 SALO
 Finland

THIRD ANGLE PROJECTION:

DRAWING TITLE
C14541_HB-2X2-RS

This drawing is the property of LEDiL Oy. It may not be reproduced, copied or communicated without a written agreement with LEDiL Oy.

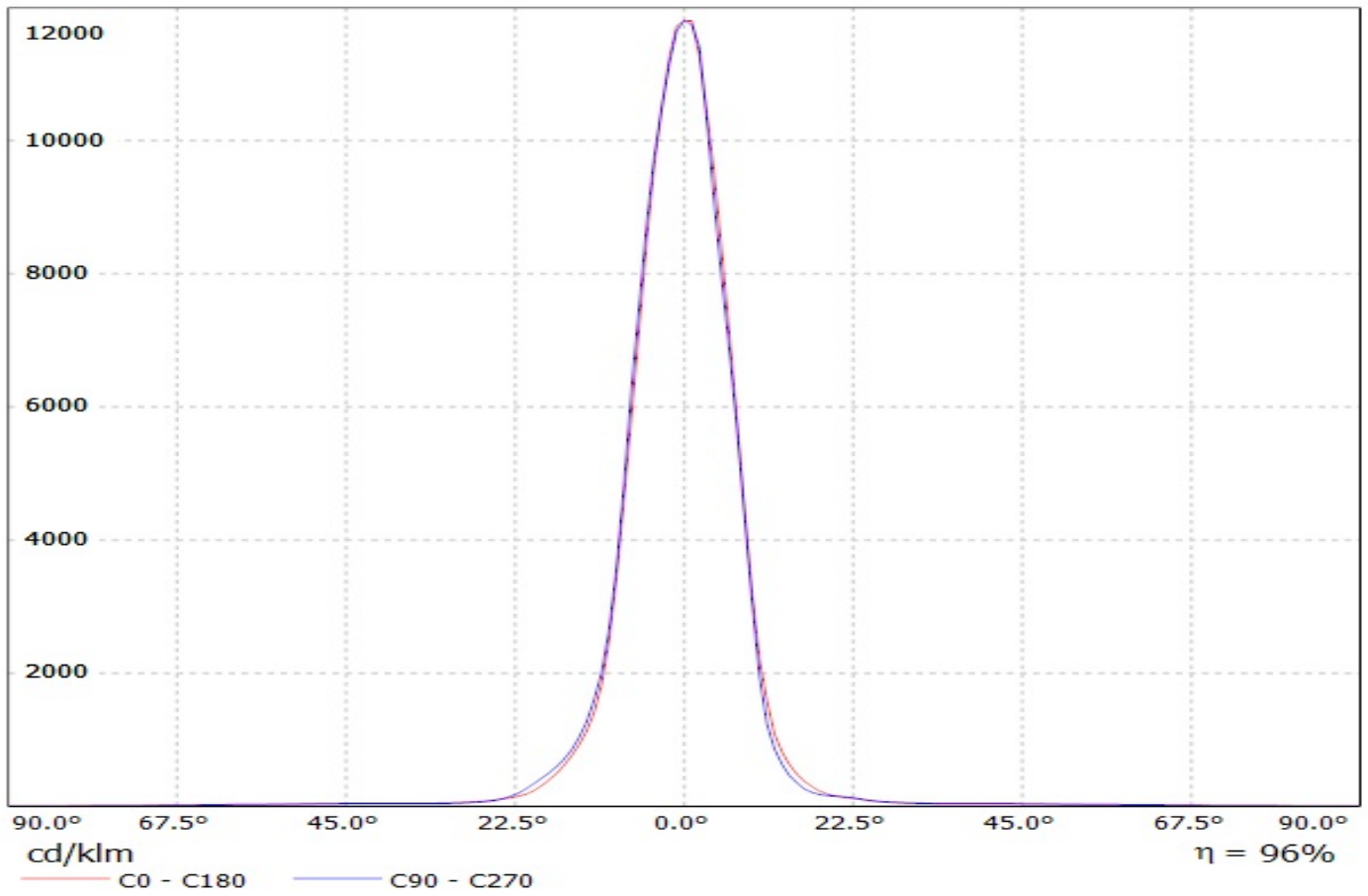
SIZE	PART NUMBER		
A3	C14541		

SCALE	3:2	WEIGHT	-	SHEET	1/1
-------	-----	--------	---	-------	-----

H G B A

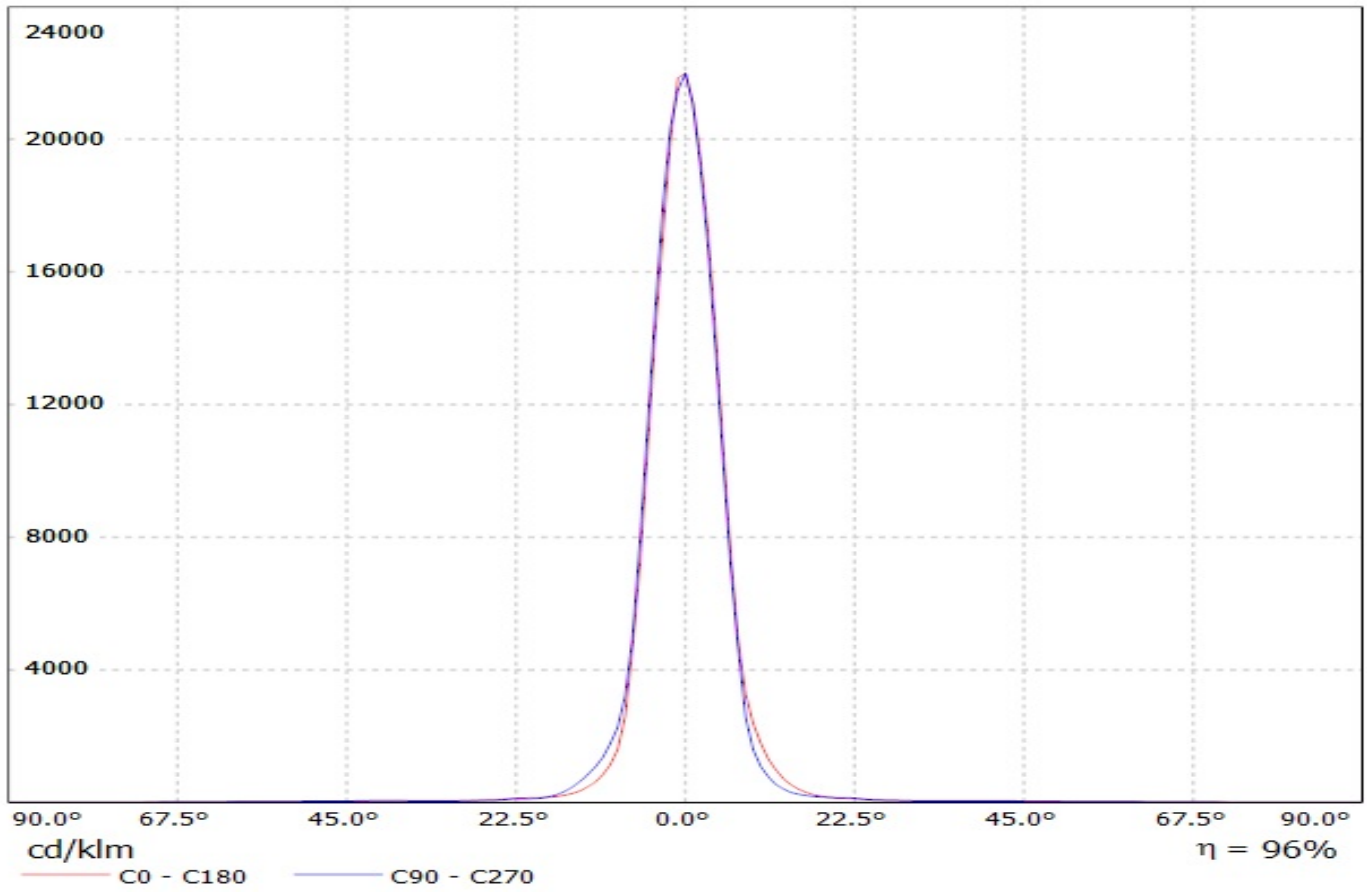
Luminaire: LEDiL Oy C14541_HB-2X2-RS_(XP-G2_(XPGBWT-L1-000-00G51)

Lamps: 1 x Cree_XP-G2_(XPGBWT-L1-000-00G51)_405.738lm@250mA_P=2.94157W_I=250mA

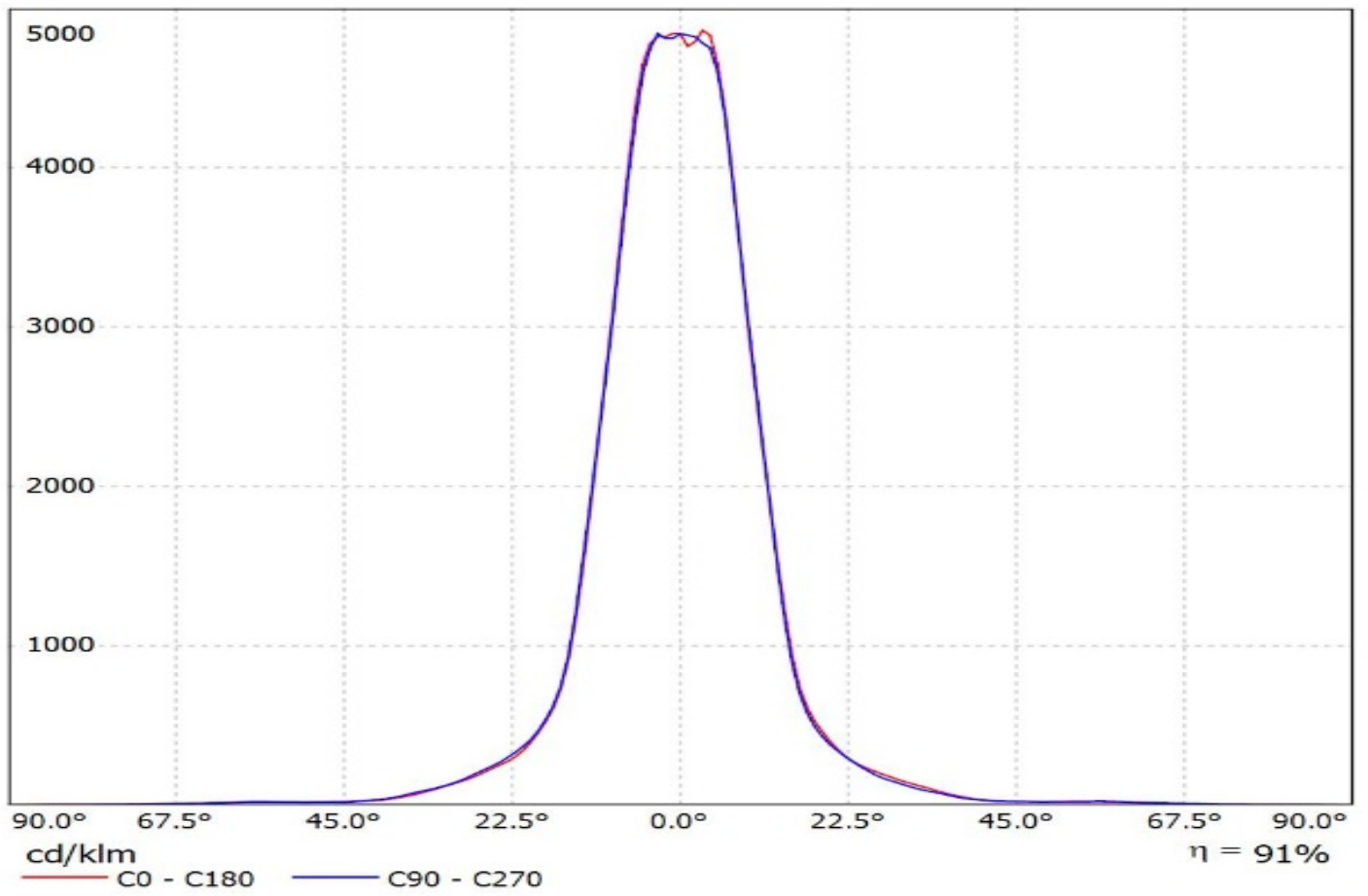


Luminaire: LEDiL Oy C14541_HB-2X2-RS_(XP-E2_(XPEBWT-L1-7B4-Q4-0-01)

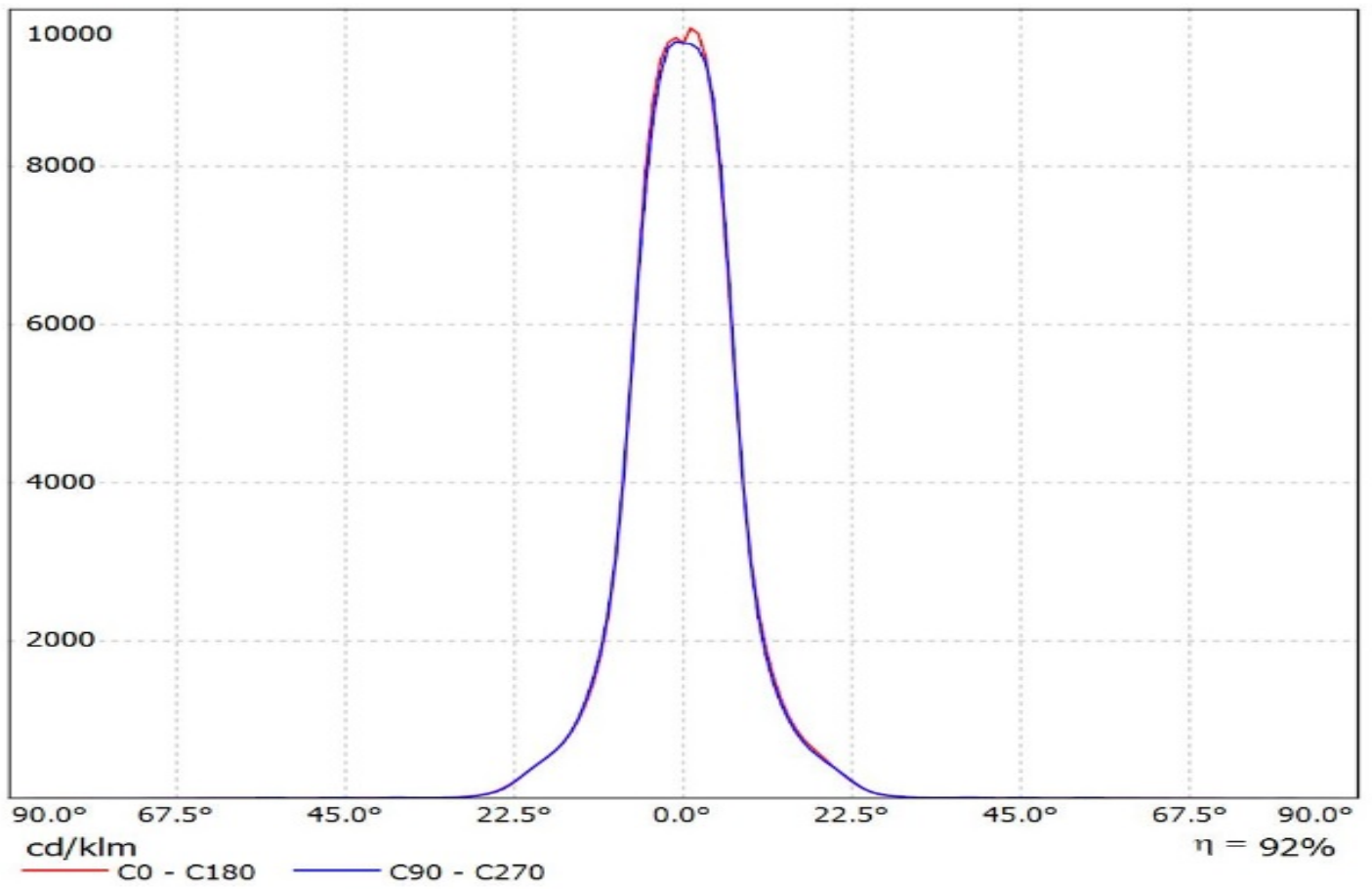
Lamps: 1 x Cree_XP-E2_(XPEBWT-L1-7B4-Q4-0-01)_330.877lm@250mA_P=2.92033W_I=250mA



Luminaire: Ledil Oy C14541_HB-2X2-RS_XPH35HD_SIMULATED
Lamps: 1 x CREE XPH35HD

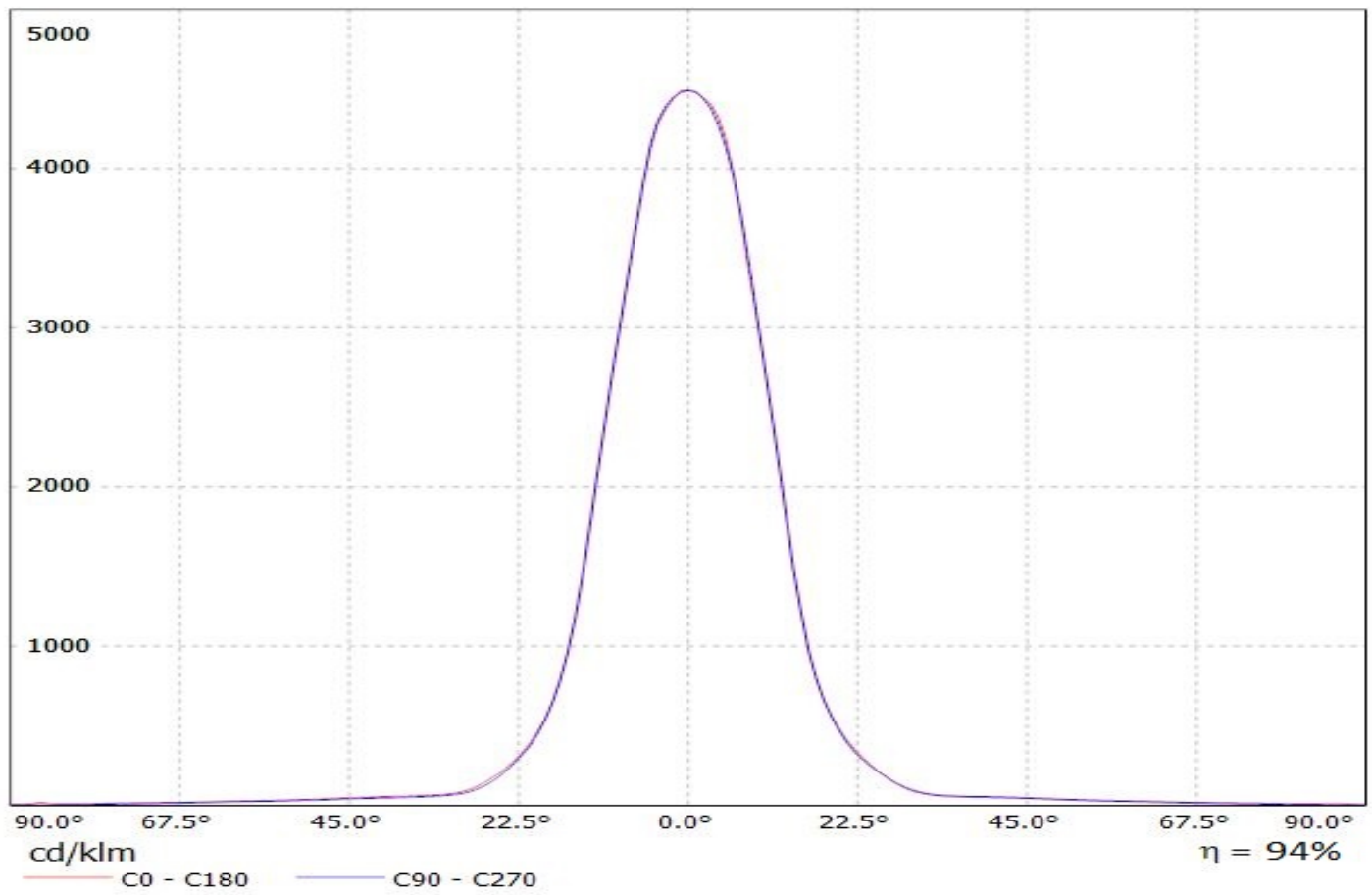


Luminaire: Ledil Oy C14541_HB-2X2-RS_XPH35HI_SIMULATED
Lamps: 1 x CREE XPH35HI



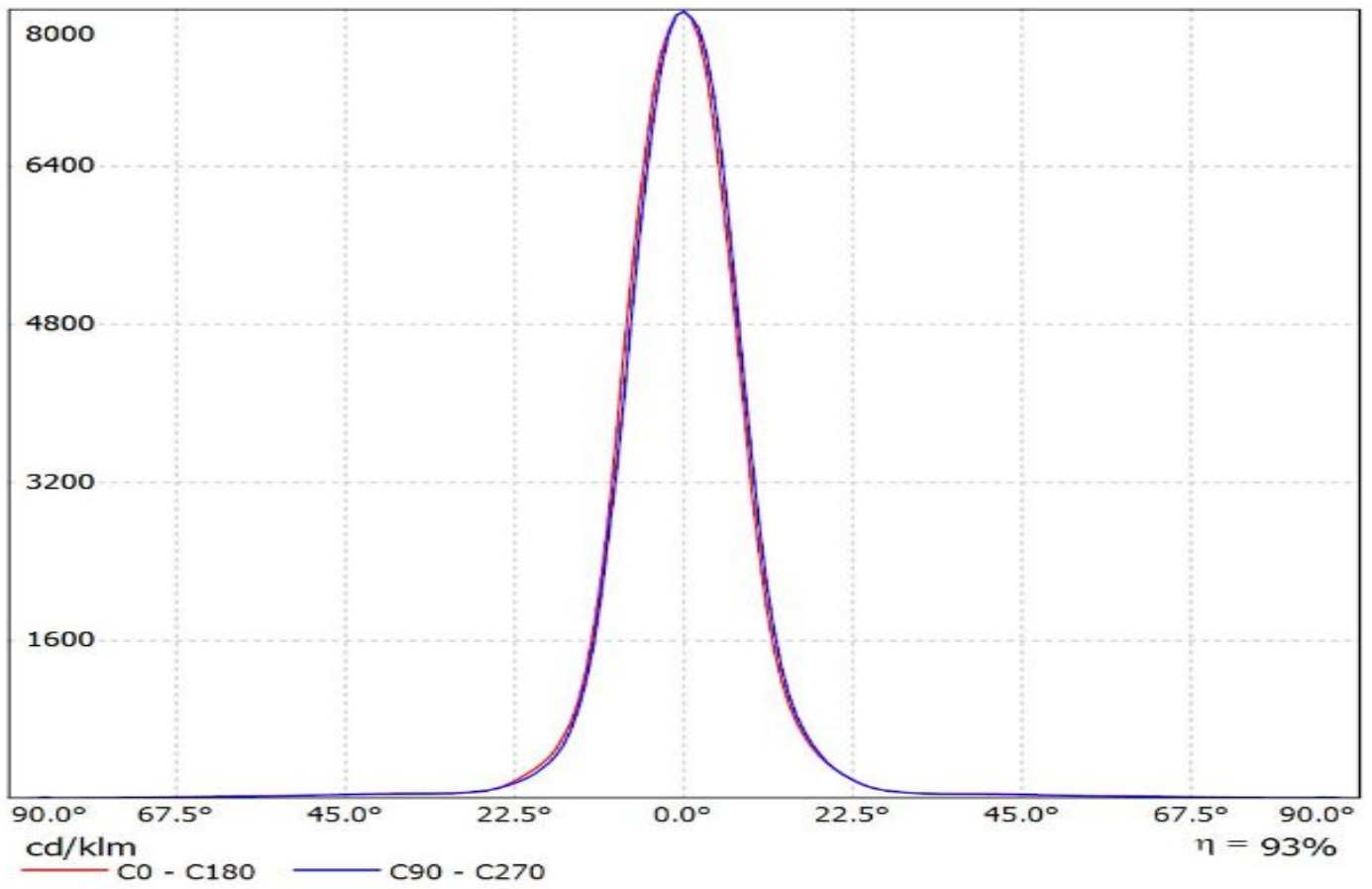
Luminaire: LEDiL Oy C14541_HB-2X2-RS_(NWSL229AE)

Lamps: 1 x Nichia_2X2_NWSL229AE_476.548lm@250mA_P=2.7515W_I=0.250A



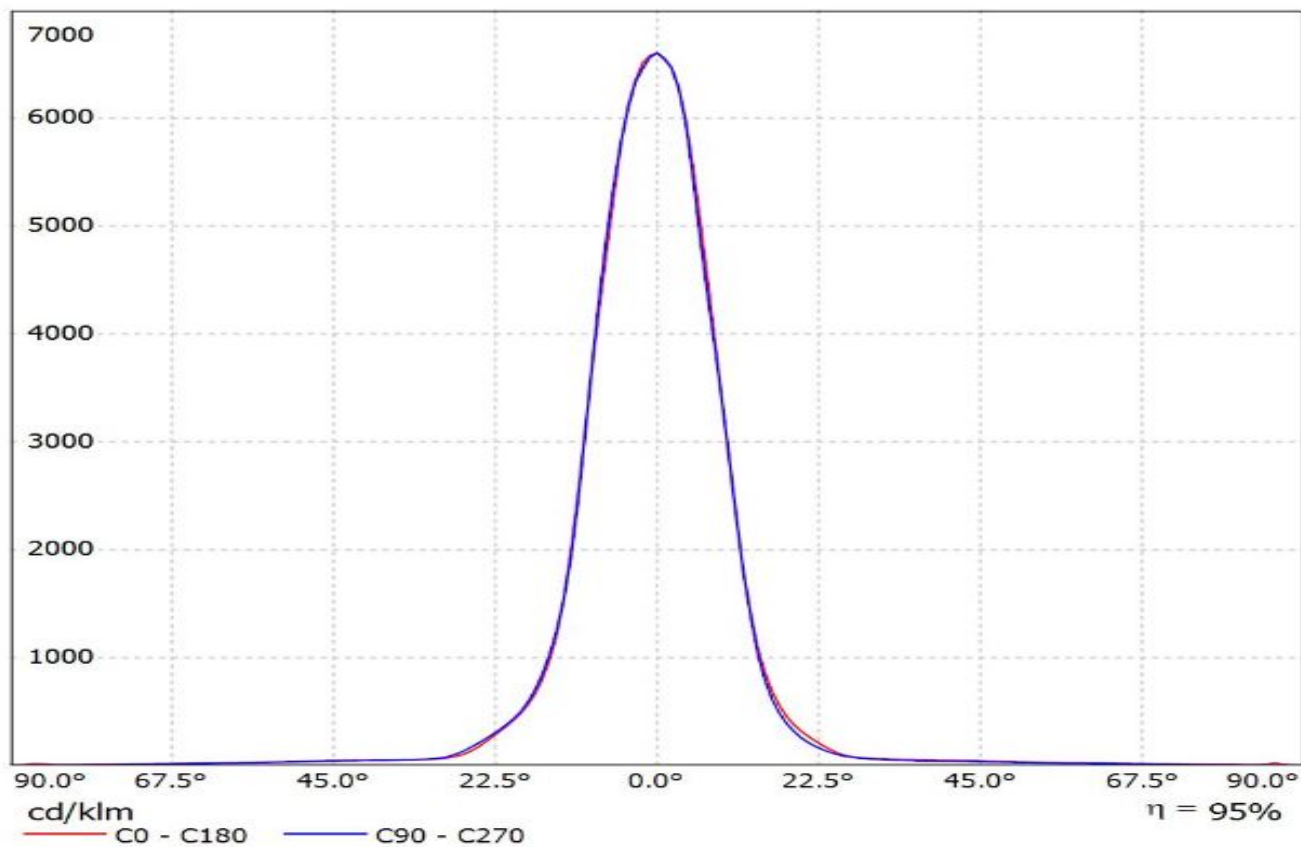
Luminaire: Ledil C14541_HB-2x2-RS_(NVSL219CE)

Lamps: 1 x Nichia_NVSL219CE_496.405lm@250mA_CCT=4000K_P=2.8465W_I=0.25A



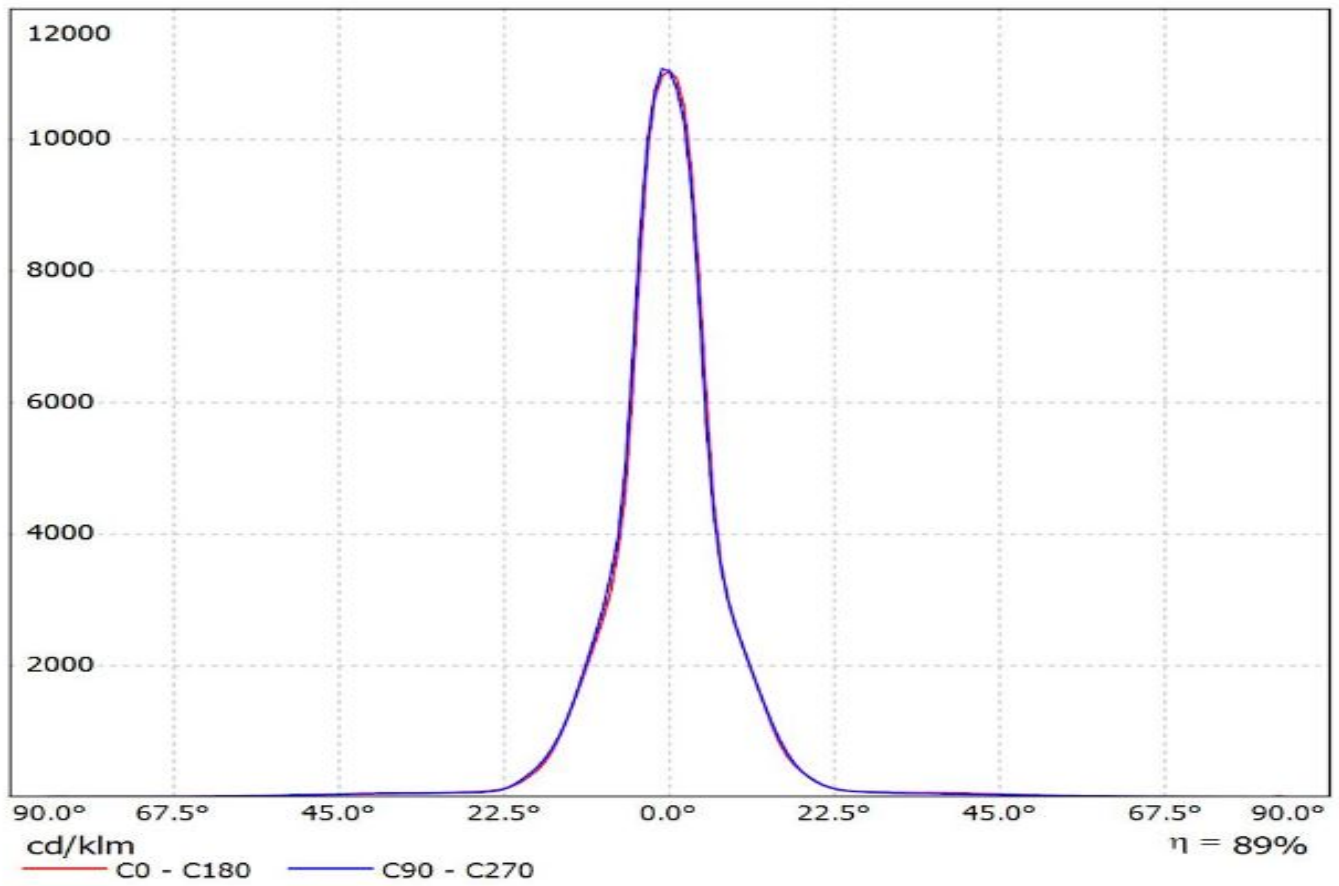
Luminaire: LEDiL Oy C14541_HB-2X2-RS_(NVSW3x9A)

Lamps: 1 x Nichia_NVSW3x9A_(sm405/R70)_483.482lmP=2.75904W_I=0.250A

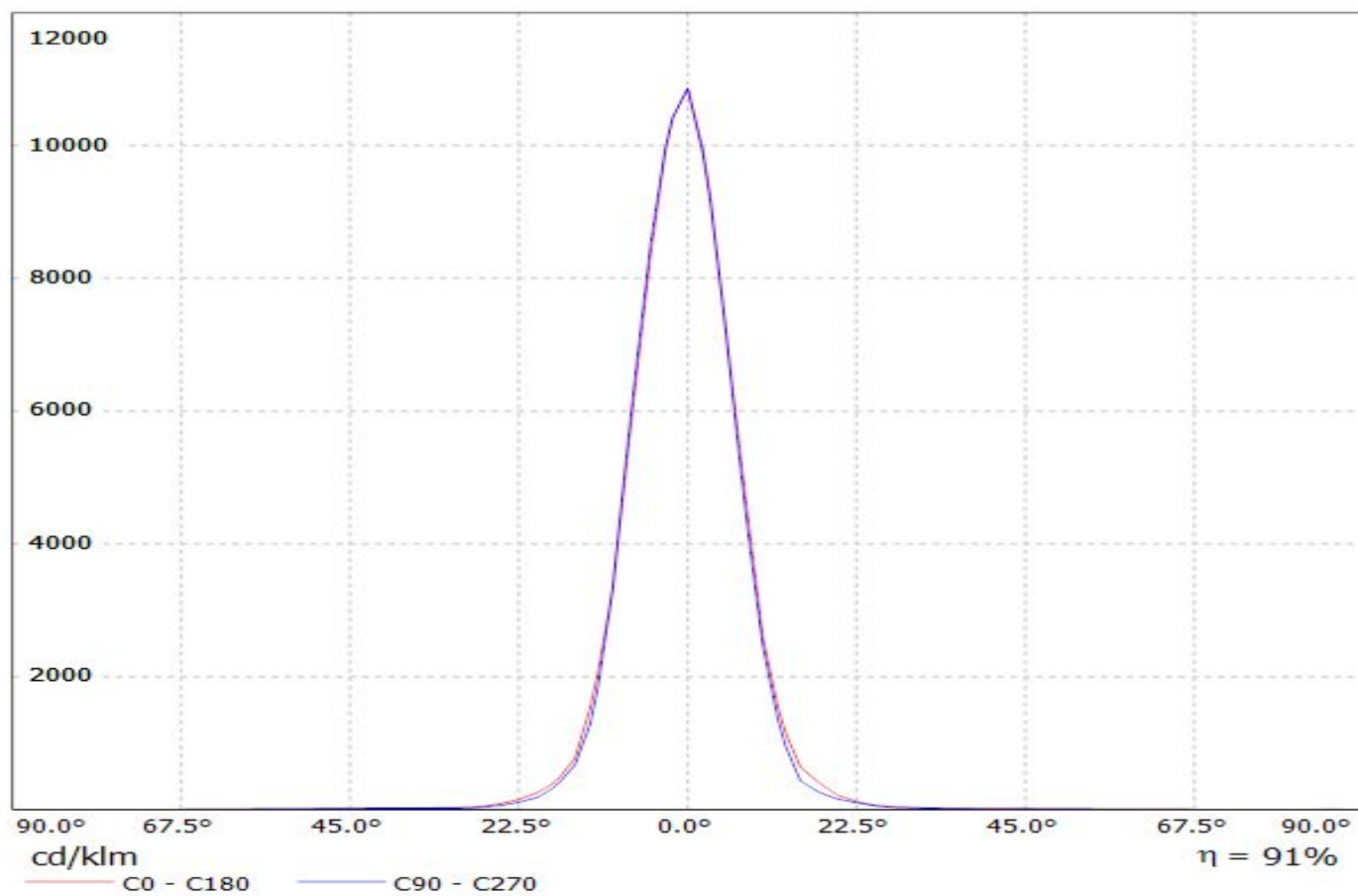


Luminaire: LEDiL Oy C14541_HB-2X2-RS_(E21A)

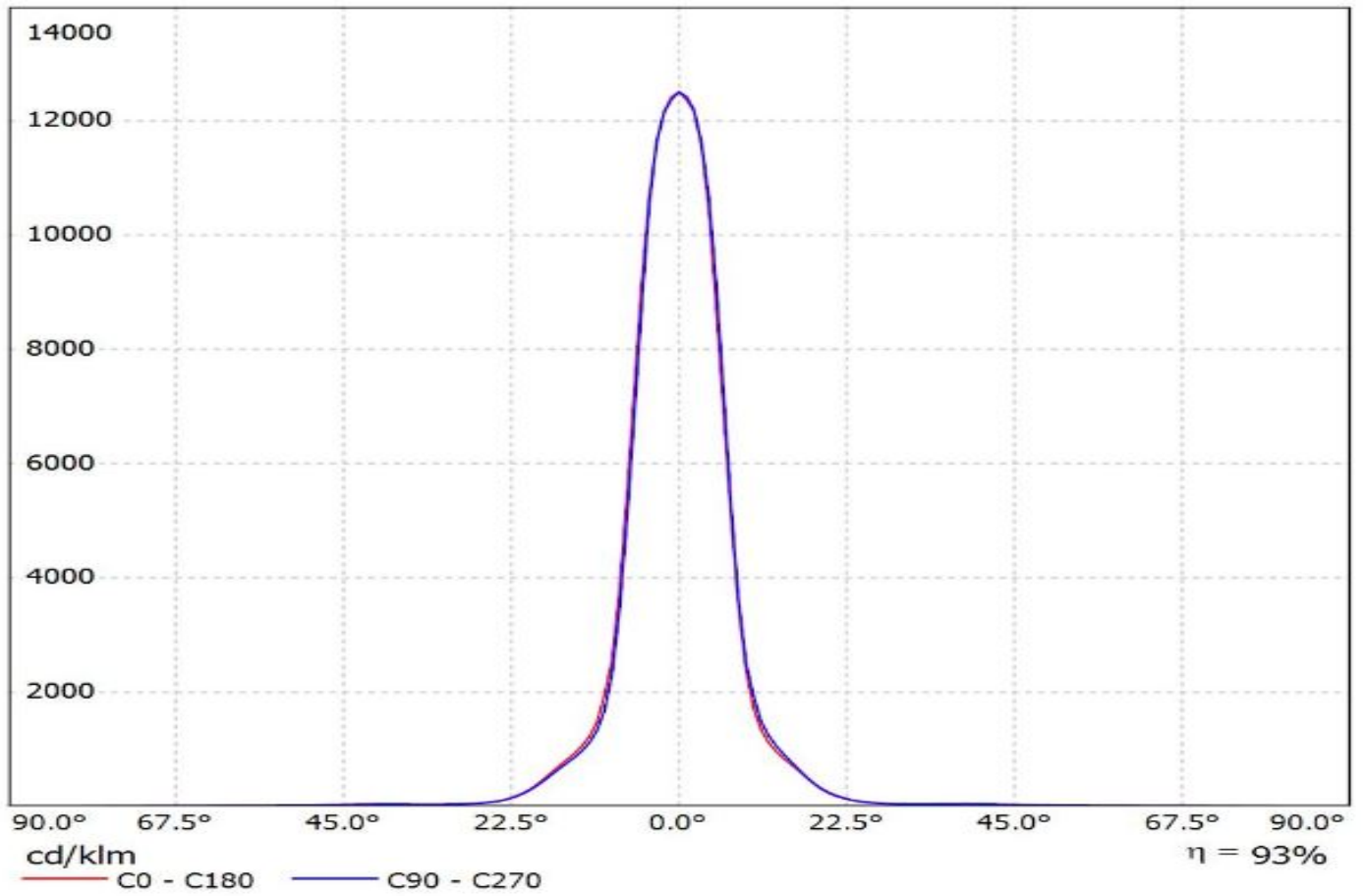
Lamps: 1 x Nichia_E21A_2X2_454.11lm@250mA_P=2.81W_I=0.250A



Luminaire: LEDiL Oy
Lamps: 1 x C14541-HB-2x2-RS_(SQ_Gen3)

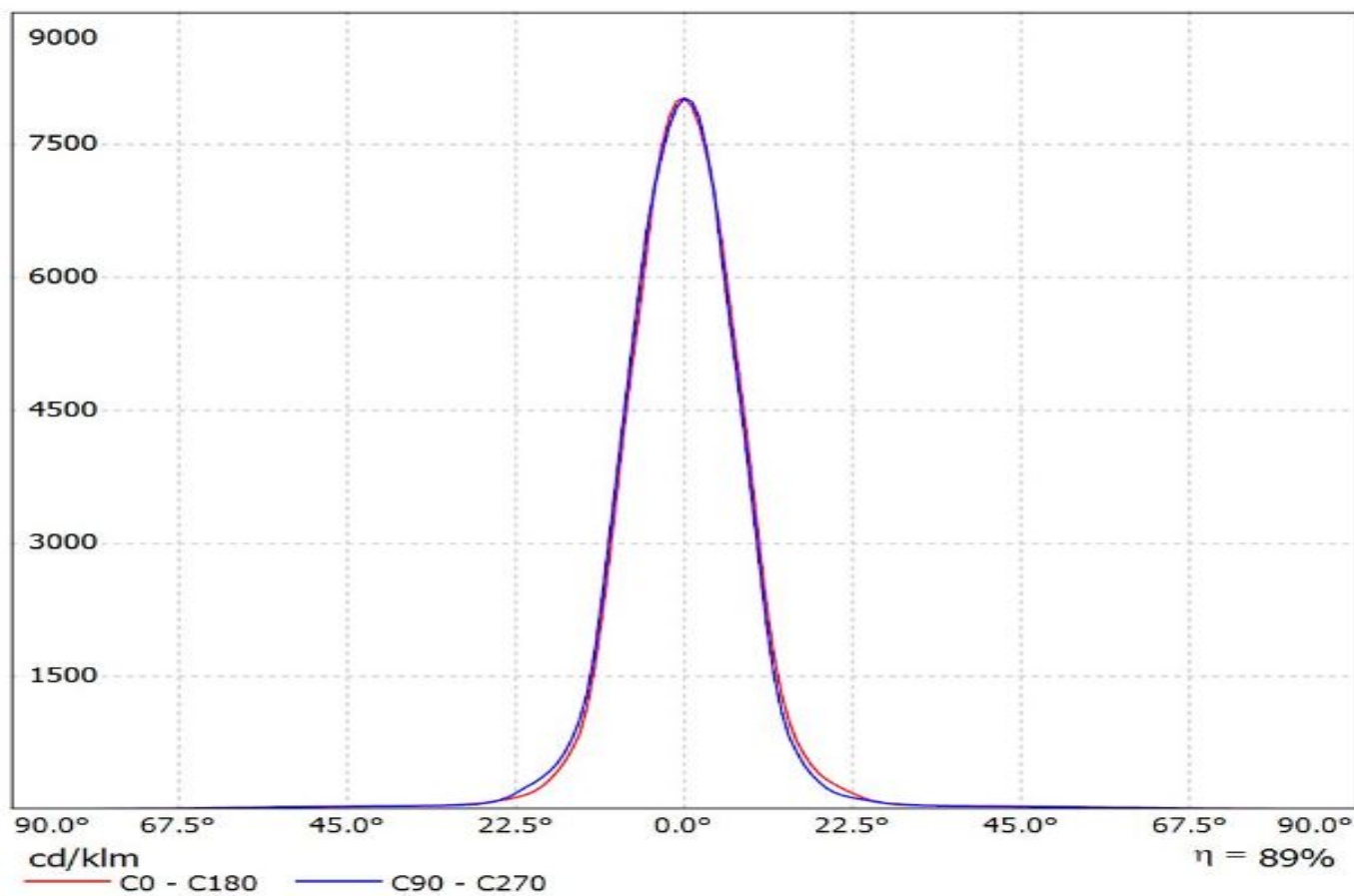


Luminaire: Ledil C14541_HB-2X2-RS_(Fortimo_FastFlex_LED_board_2x8/740_DA_G3)
Lamps: 1 x Fortimo_FastFlex_LED_board_2x8/740_DA_G3_1823.98lm@250mA_P=11.65W_I=0.25A

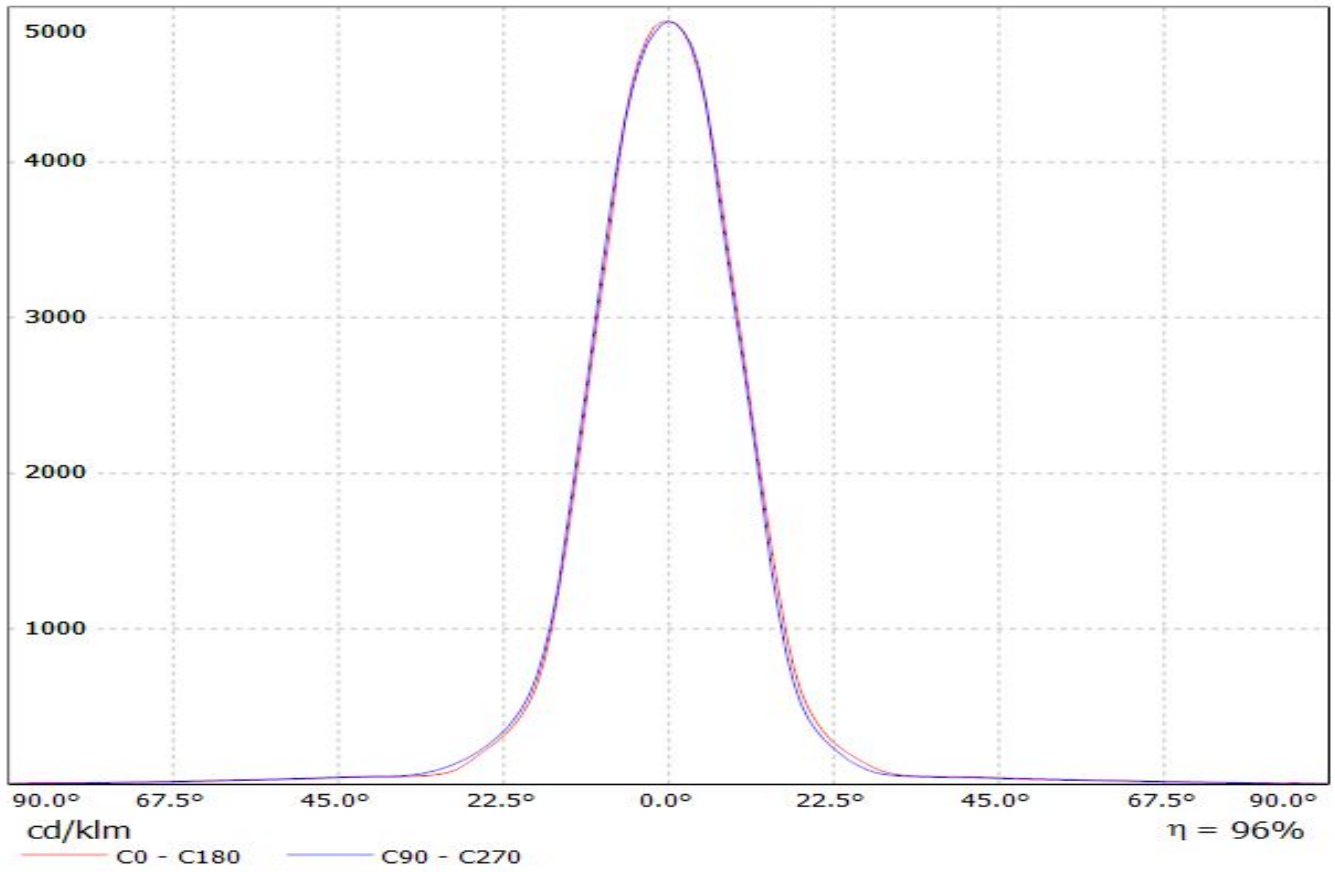


Luminaire: Ledil C14541_HB-2X2-RS_(LH351B)

Lamps: 1 x Samsung_LH351B_2x2_444.178lm@250mA_P=2.8535W_I=0.25A

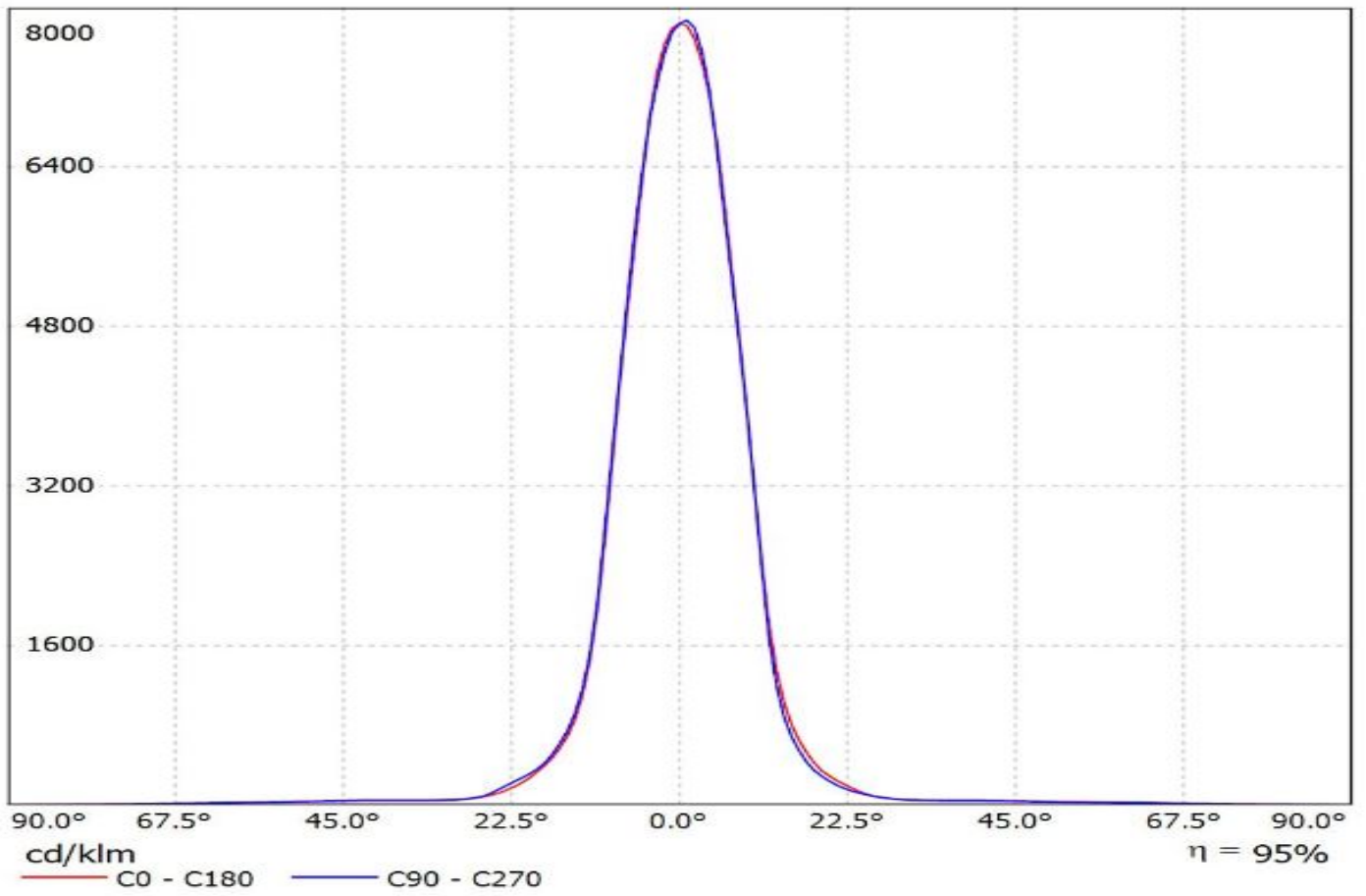


Luminaire: LEDiL Oy C14541_HB-2X2-RS_(LH351D)
Lamps: 1 x Samsung_LH351D_524.264lm@250mA_P=2.7523W_I=0.250A

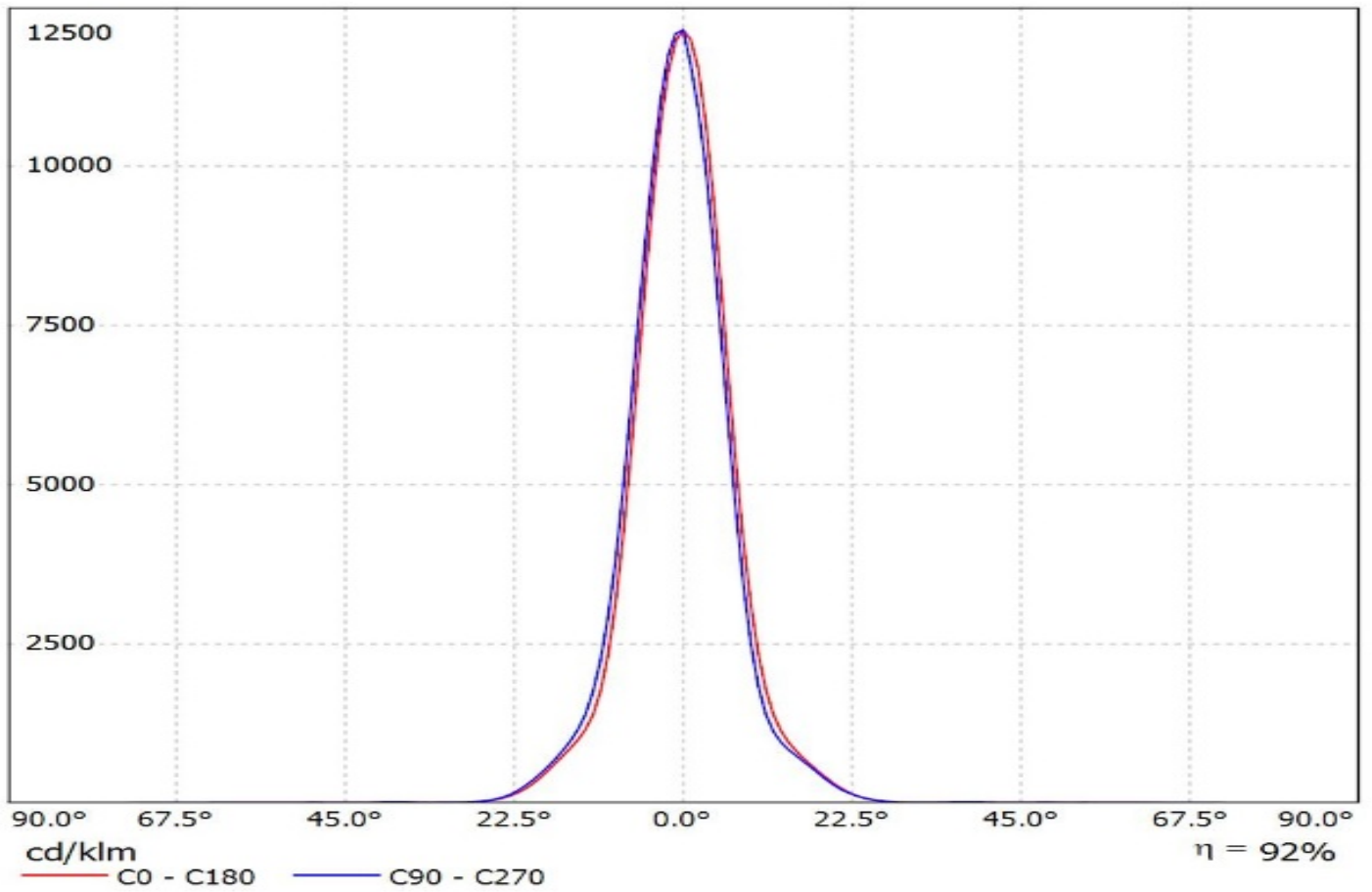


Luminaire: Ledil C14541_HB-2X2-RS_(LH351C)

Lamps: 1 x Samsung_LH351C_518.223lm@250mA_P=2.85225W_I=0.25A

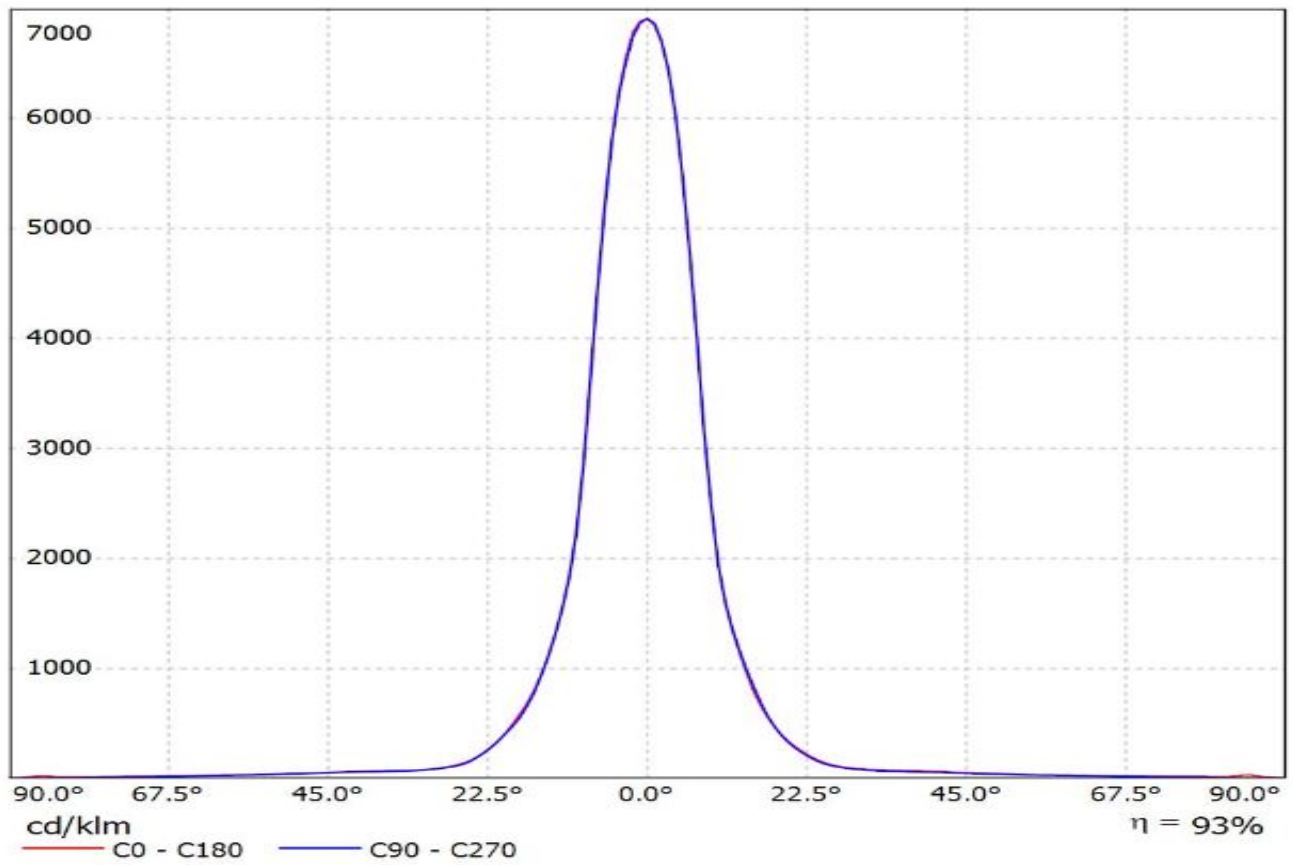


Luminaire: Ledil Oy C14541_HB-2X2-RS_(Z5M2)_SIMULATED
Lamps: 1 x Seoul Z5M2 (SZ5-M2-W0-00)

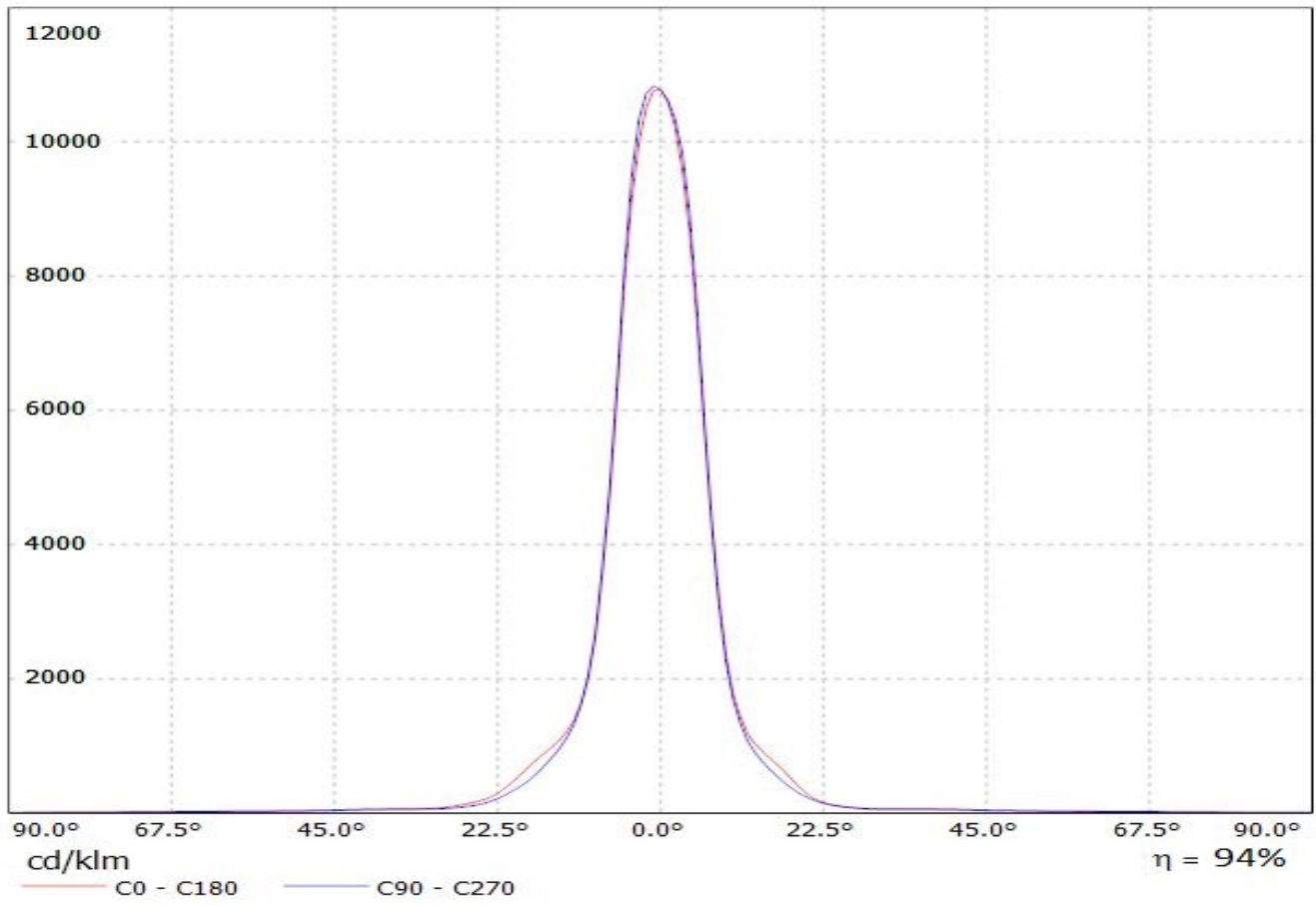


Luminaire: Ledil C14541_HB-2X2-RS_(Z8Y22plus)

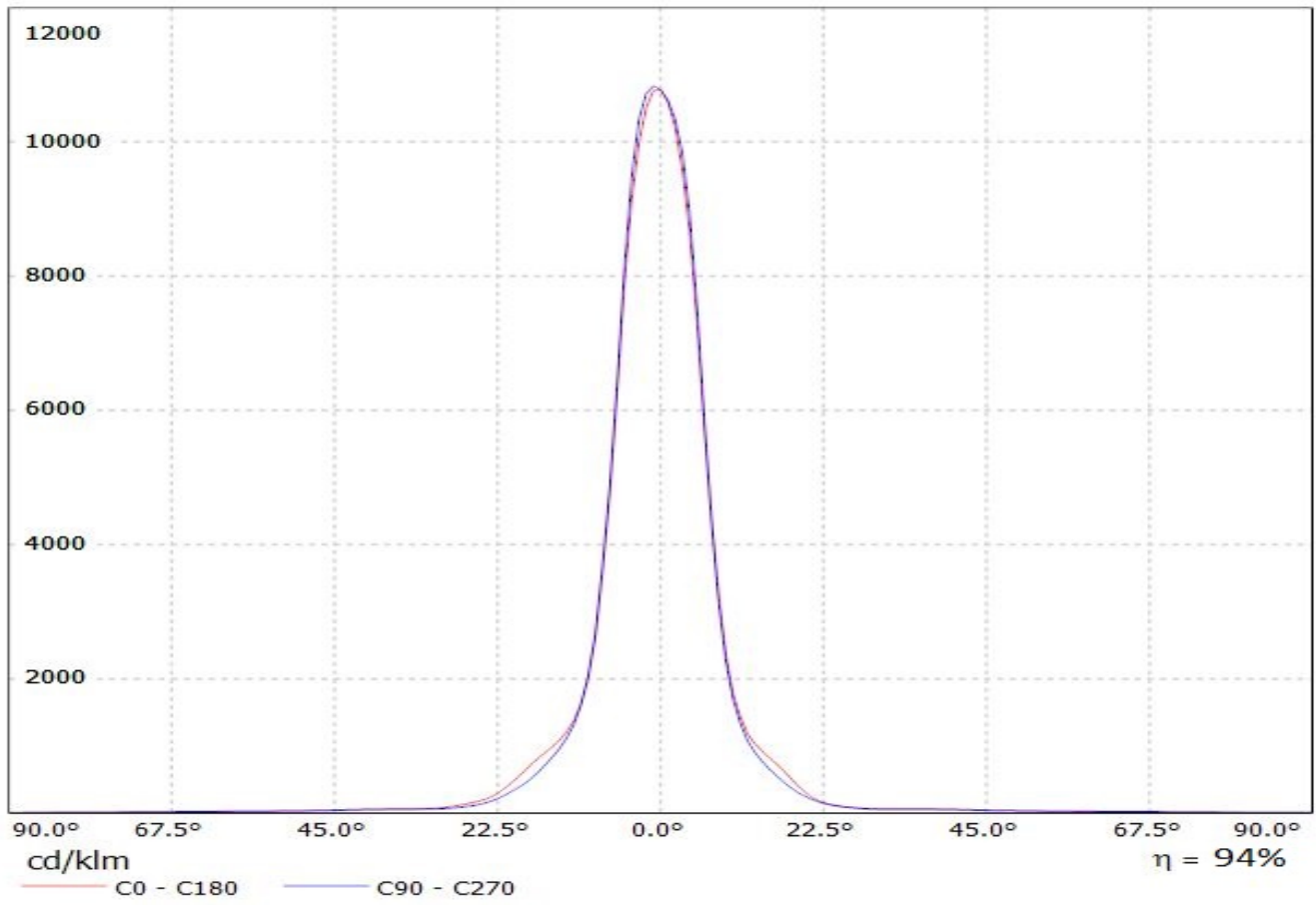
Lamps: 1 x Seoul_Z8Y22plus_(W6E2G)_513.996lm@250mA_P=2.754W_I=0.250A



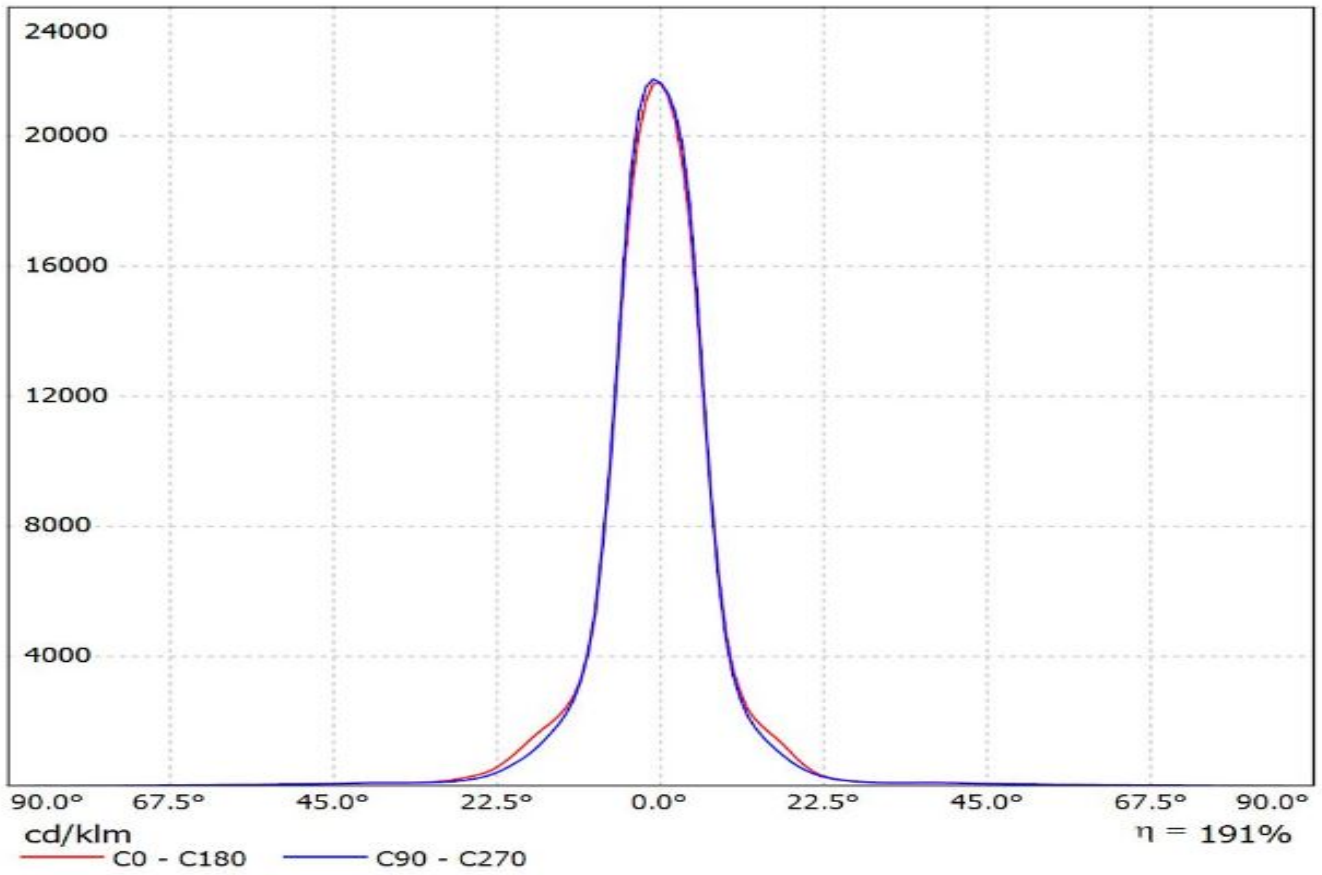
Luminaire: LEDiL Oy C14541_HB-2X2-RS_(Tridonic_Module_RLE_G1)
Lamps: 1 x Tridonic_Module_RLE_G1_4594.42lm@700mA_P=32.1515W_I=0.700A



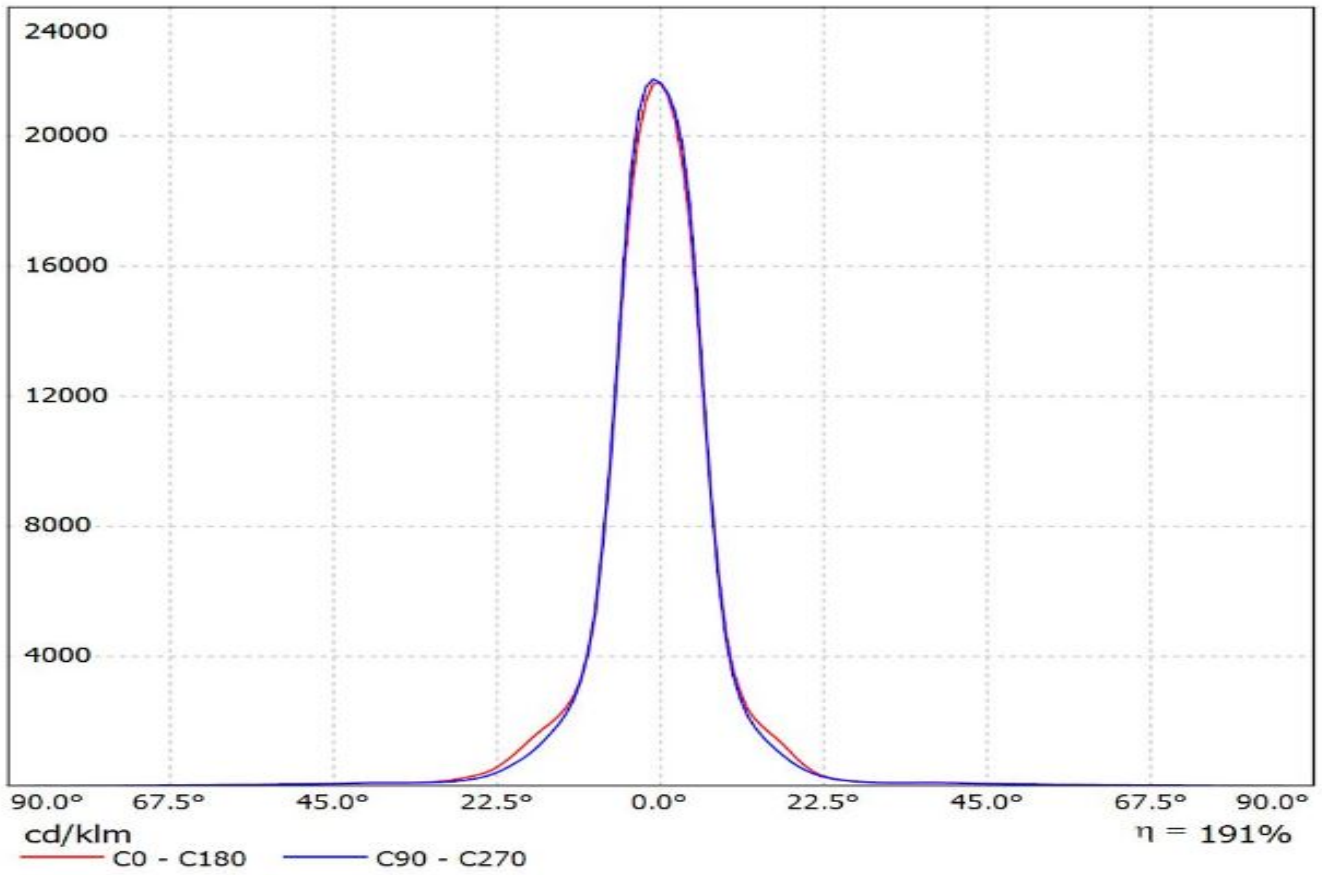
Luminaire: LEDiL Oy C14541_HB-2X2-RS_(Tridonic_Module_RLE_G1)
Lamps: 1 x Tridonic_Module_RLE_G1_4594.42lm@700mA_P=32.1515W_I=0.700A



Luminaire: LEDiL Oy C14541_HB-2X2-RS_(Tridonic_Module_RLE_G1)
Lamps: 1 x Tridonic_Module_RLE_G1_2288lm@700mA_P=16W_I=0.700A

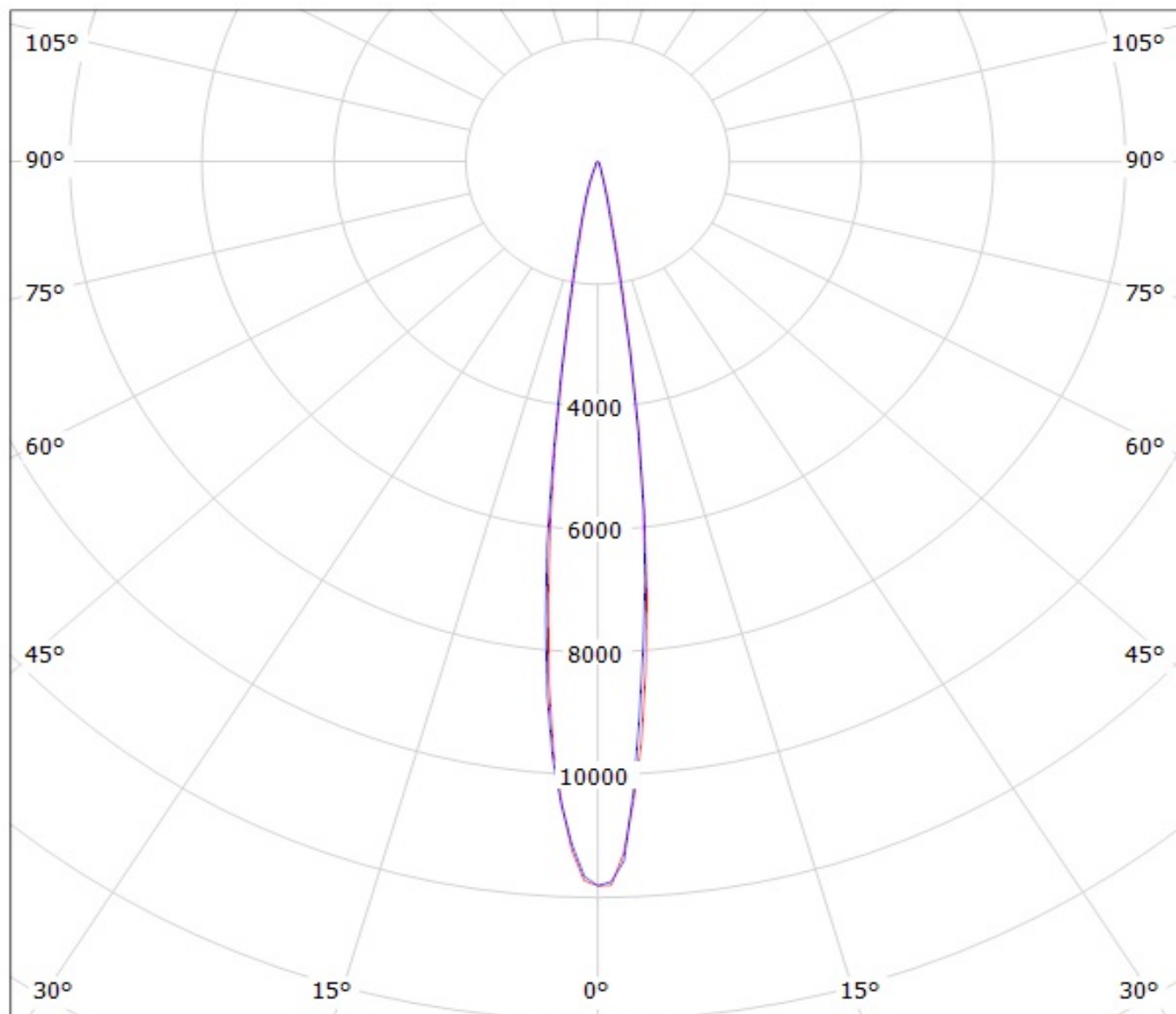


Luminaire: LEDiL Oy C14541_HB-2X2-RS_(Tridonic_Module_RLE_G1)
Lamps: 1 x Tridonic_Module_RLE_G1_2288lm@700mA_P=16W_I=0.700A



Luminaire: LEDiL Oy C14541_HB-2X2-RS_(XP-G2_(XPGBWT-L1-000-00G51)

Lamps: 1 x Cree_XP-G2_(XPGBWT-L1-000-00G51)_405.738lm@250mA_P=2.94157W_I=250mA



cd/klm

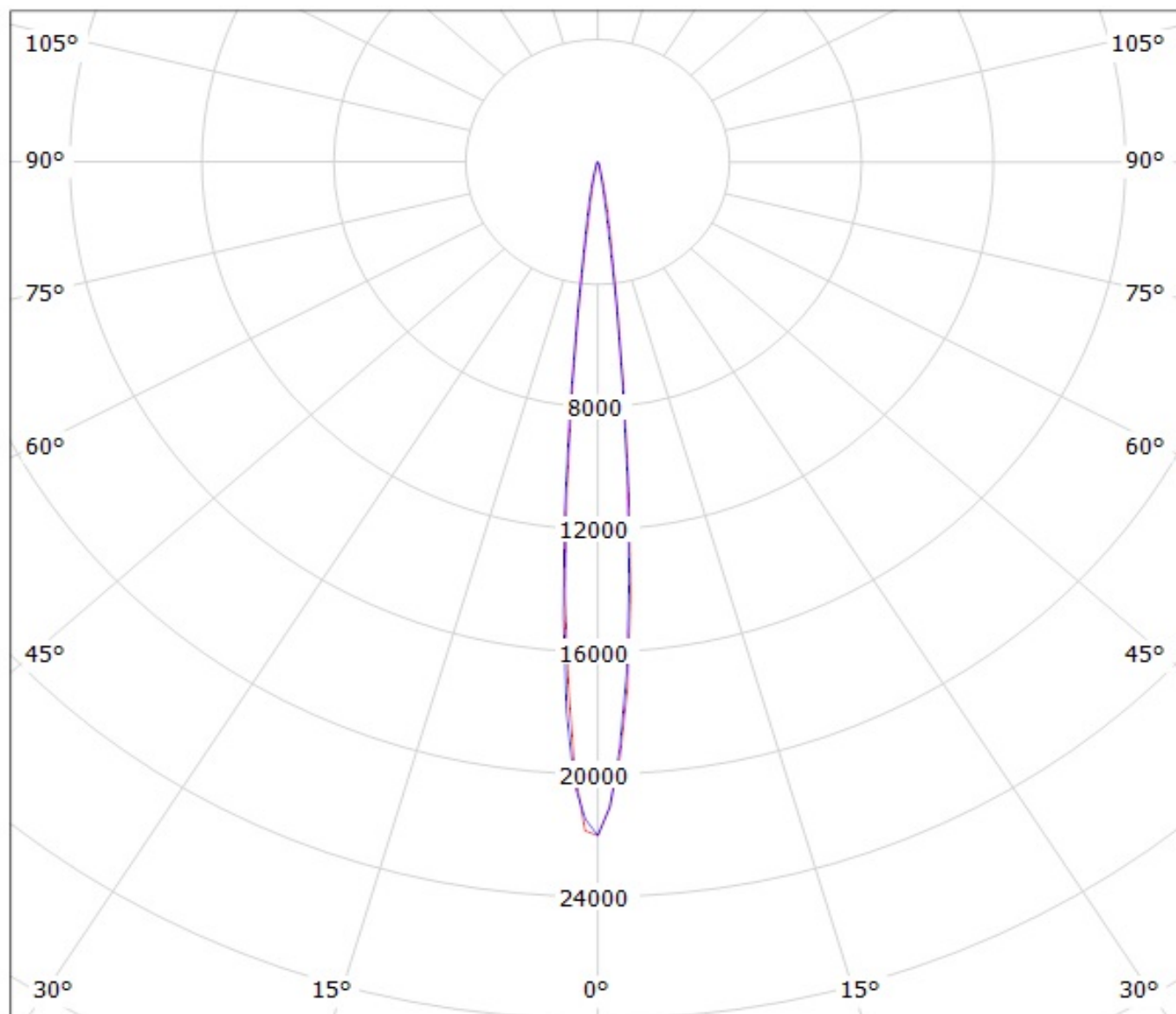
— C0 - C180

— C90 - C270

$\eta = 96\%$

Luminaire: LEDiL Oy C14541_HB-2X2-RS_(XP-E2_(XPEBWT-L1-7B4-Q4-0-01)

Lamps: 1 x Cree_XP-E2_(XPEBWT-L1-7B4-Q4-0-01)_330.877lm@250mA_P=2.92033W_I=250mA



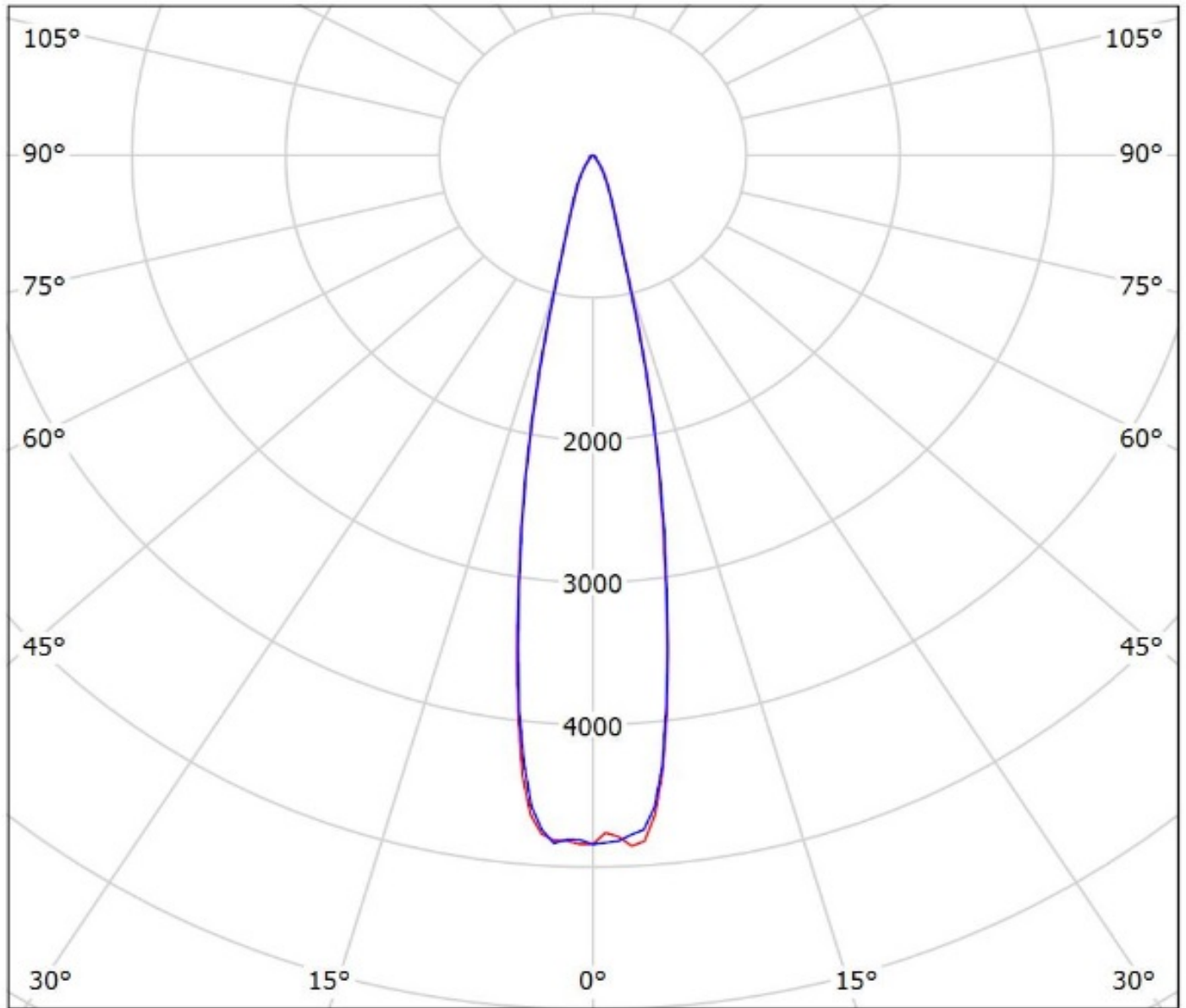
cd/klm

— C0 - C180

— C90 - C270

η = 96%

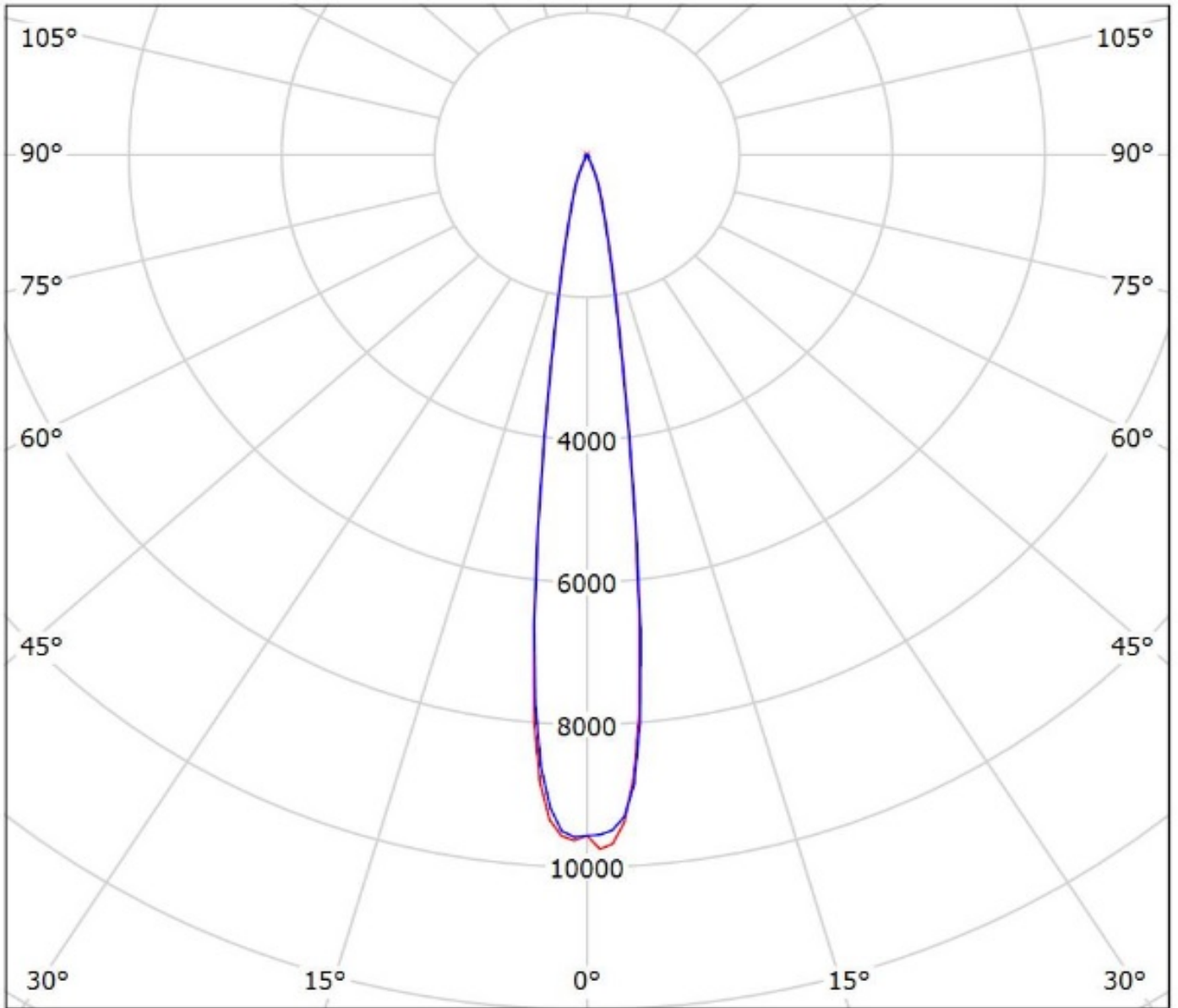
Luminaire: Ledil Oy C14541_HB-2X2-RS_XPH35HD_SIMULATED
Lamps: 1 x CREE XPH35HD



cd/klm
— C0 - C180 — C90 - C270

$\eta = 91\%$

Luminaire: Ledil Oy C14541_HB-2X2-RS_XPH35HI_SIMULATED
Lamps: 1 x CREE XPH35HI



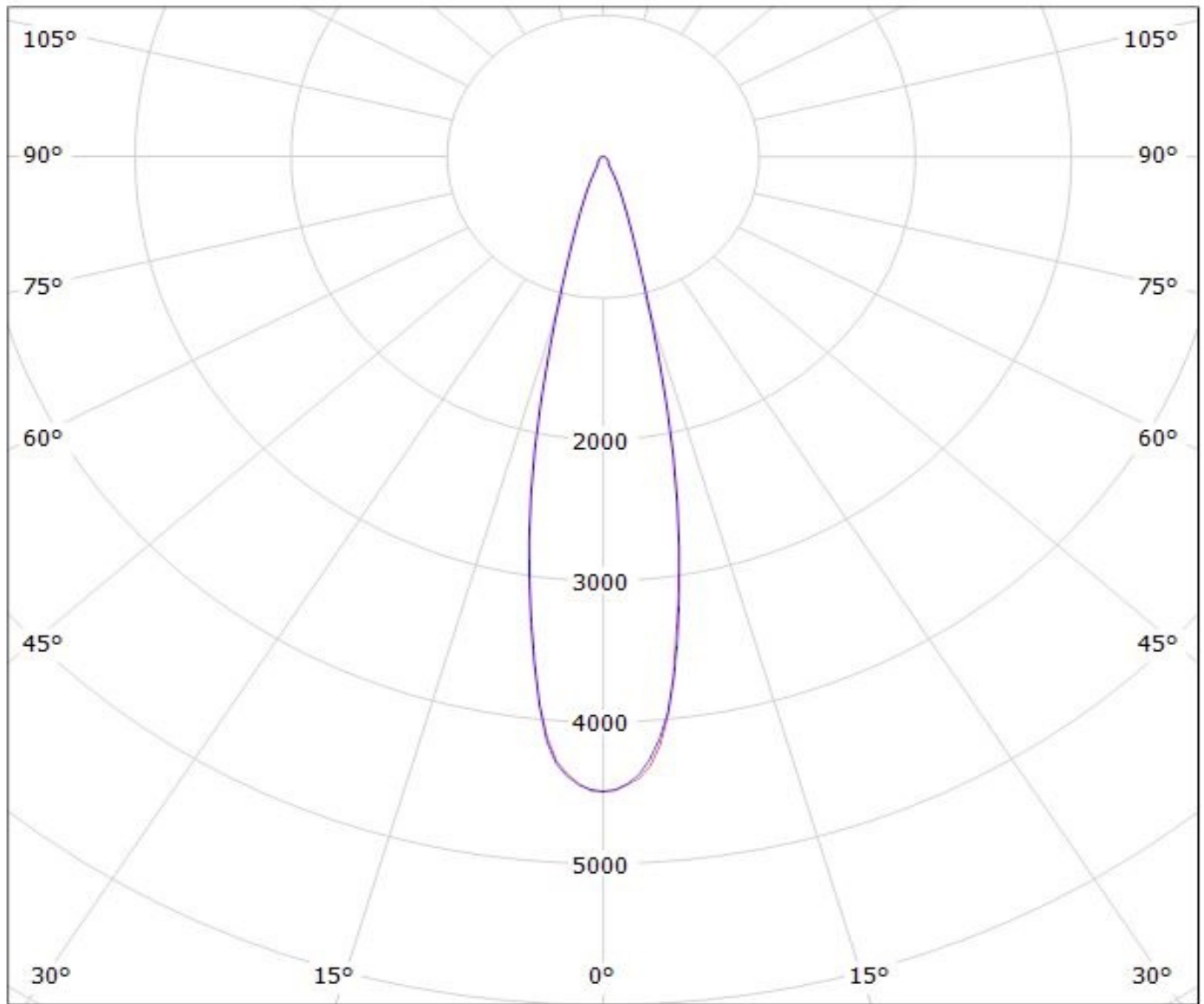
cd/klm

— C0 - C180 — C90 - C270

$\eta = 92\%$

Luminaire: LEDiL Oy C14541_HB-2X2-RS_(NWSL229AE)

Lamps: 1 x Nichia_2X2_NWSL229AE_476.548lm@250mA_P=2.7515W_I=0.250A



cd/klm

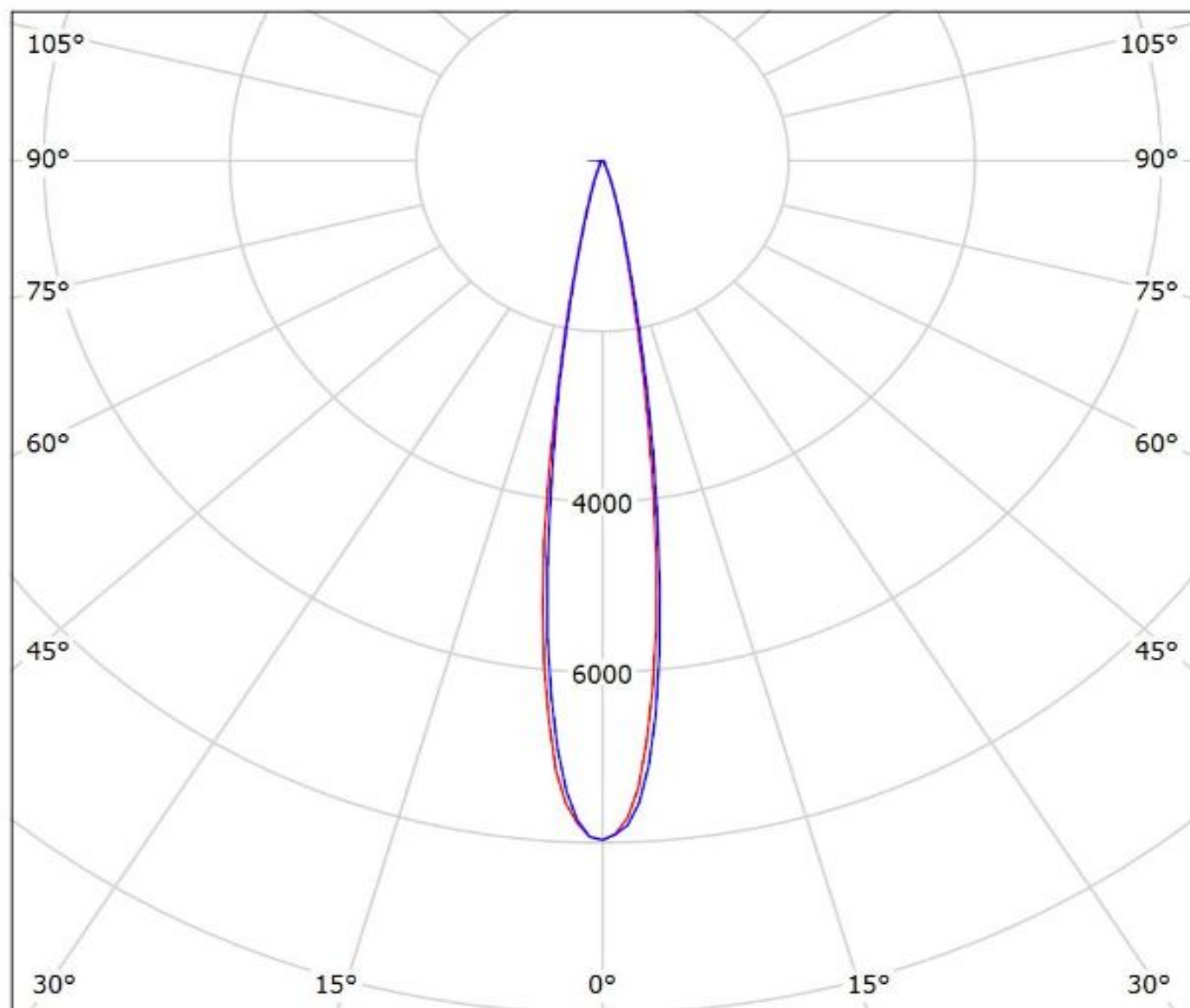
— C0 - C180

— C90 - C270

$\eta = 94\%$

Luminaire: Ledil C14541_HB-2x2-RS_(NVSL219CE)

Lamps: 1 x Nichia_NVSL219CE_496.405lm@250mA_CCT=4000K_P=2.8465W_I=0.25A



cd/klm

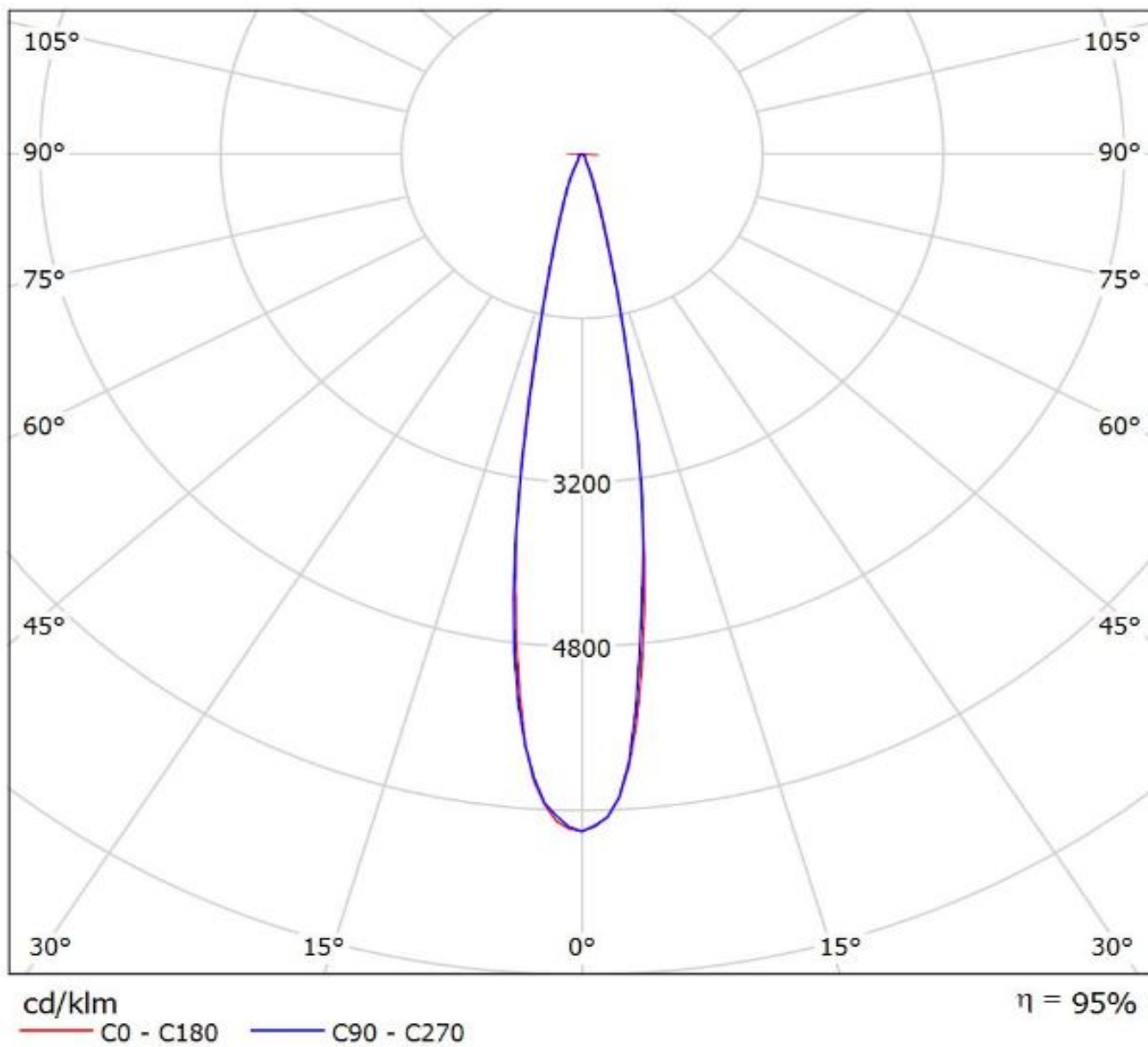
— C0 - C180

— C90 - C270

$\eta = 93\%$

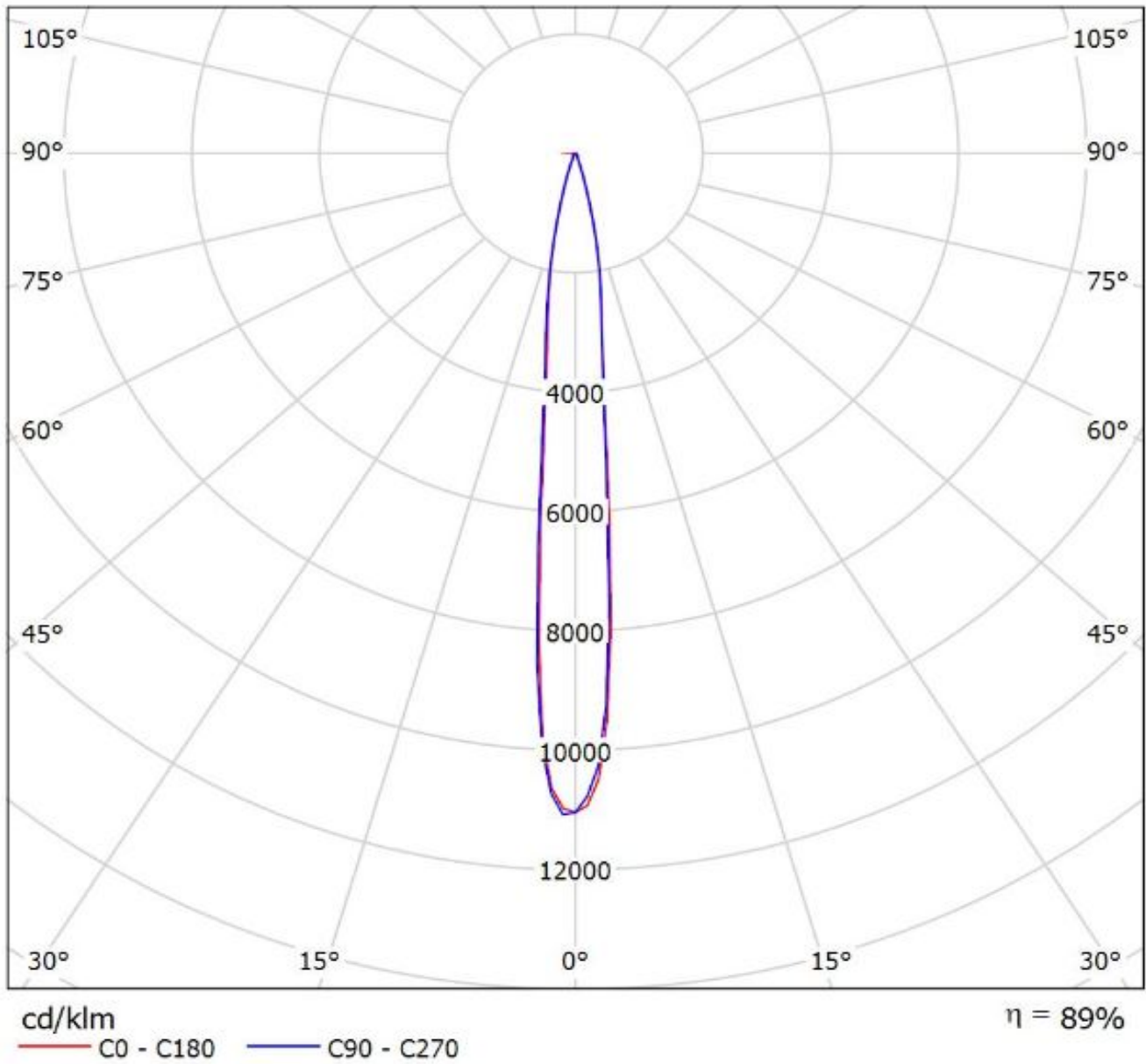
Luminaire: LEDiL Oy C14541_HB-2X2-RS_(NVSW3x9A)

Lamps: 1 x Nichia_NVSW3x9A_(sm405/R70)_483.482lmP=2.75904W_η=0.250A

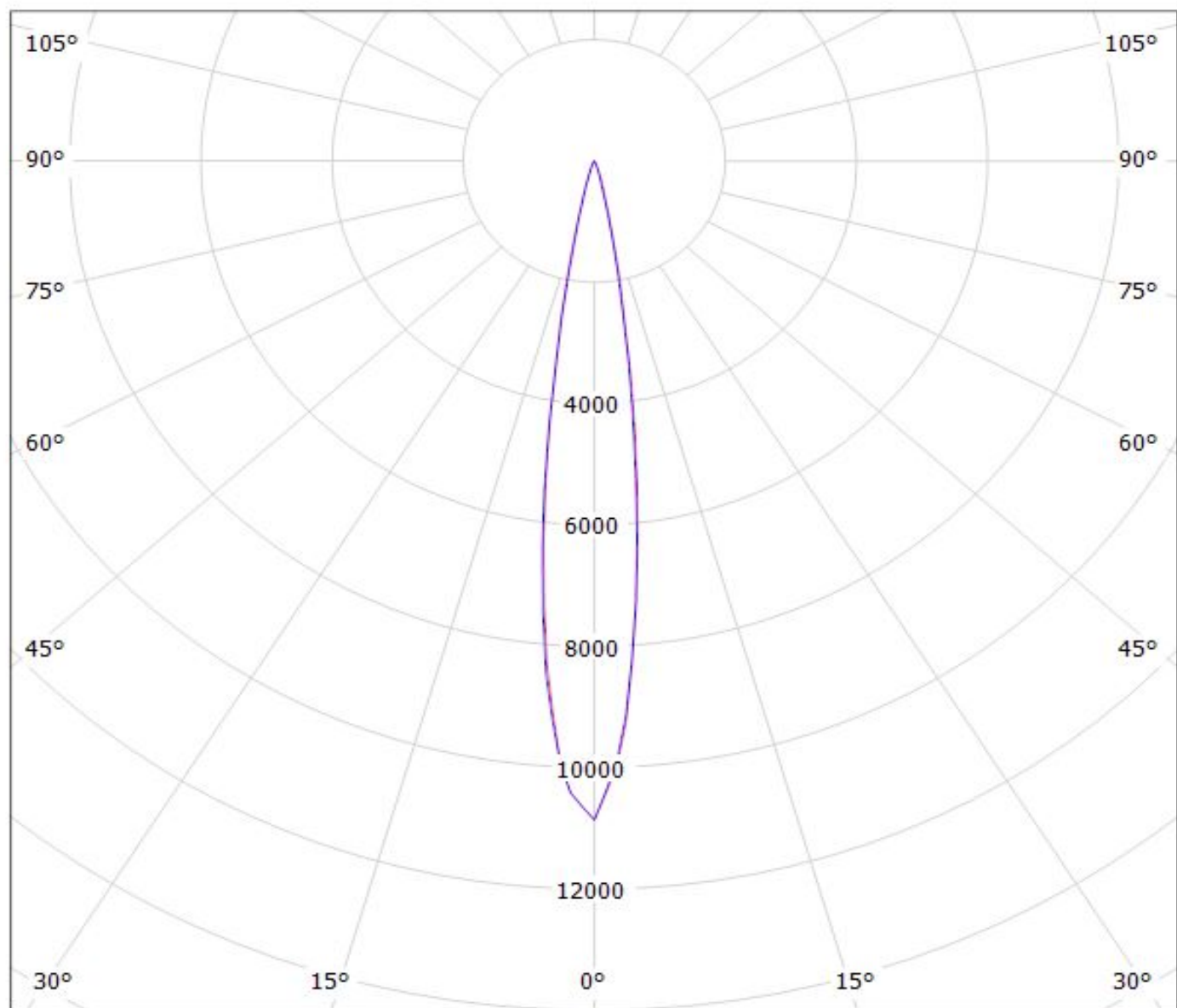


Luminaire: LEDiL Oy C14541_HB-2X2-RS_(E21A)

Lamps: 1 x Nichia_E21A_2X2_454.11lm@250mA_P=2.81W_I=0.250A



Luminaire: LEDiL Oy
Lamps: 1 x C14541-HB-2x2-RS_(SQ_Gen3)

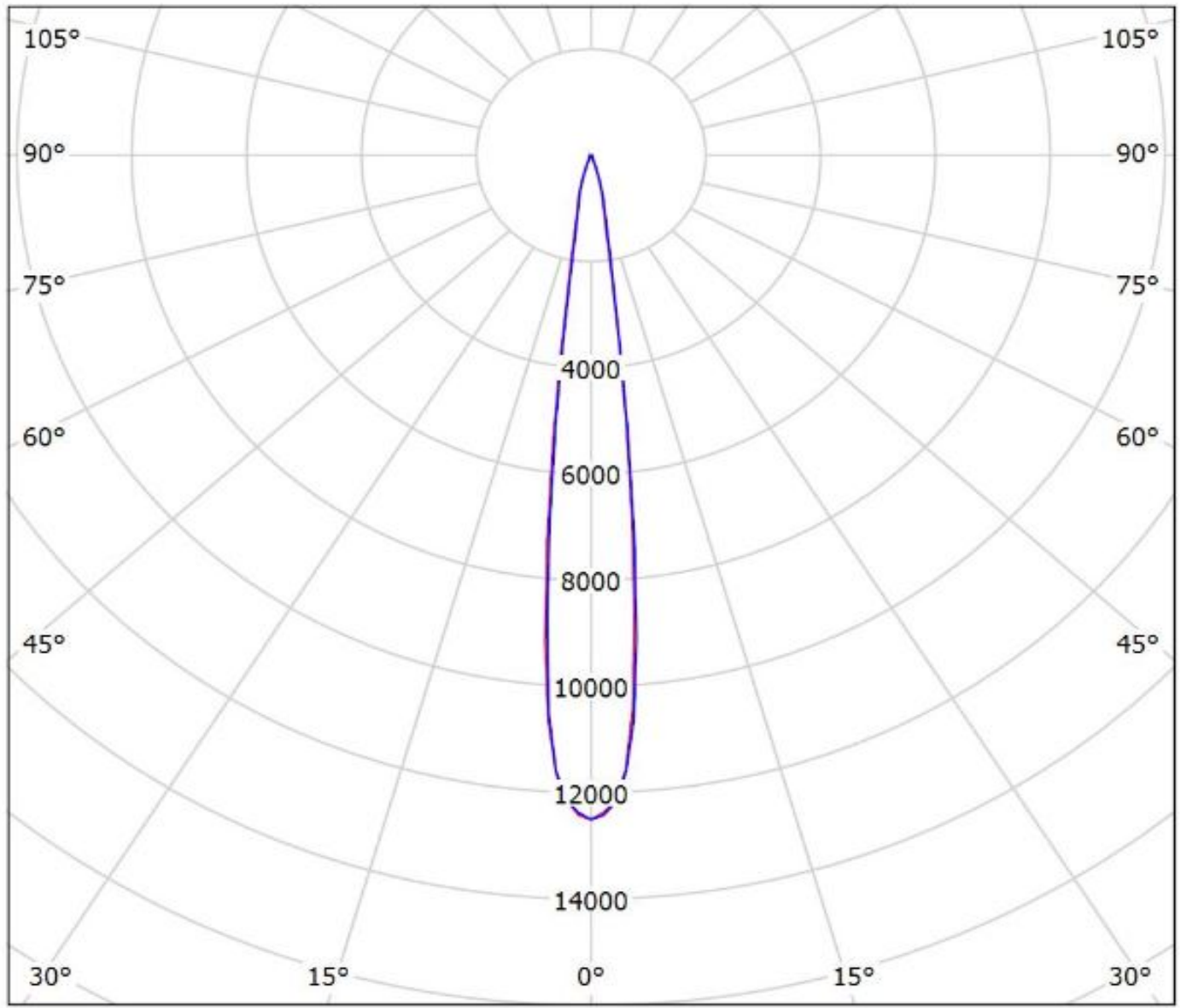


cd/klm

— C0 - C180 — C90 - C270

$\eta = 91\%$

Luminaire: Ledil C14541_HB-2X2-RS_(Fortimo_FastFlex_LED_board_2x8/740_DA_G3)
Lamps: 1 x Fortimo_FastFlex_LED_board_2x8/740_DA_G3_1823.98lm@250mA_P=11.65W_I=0.25A

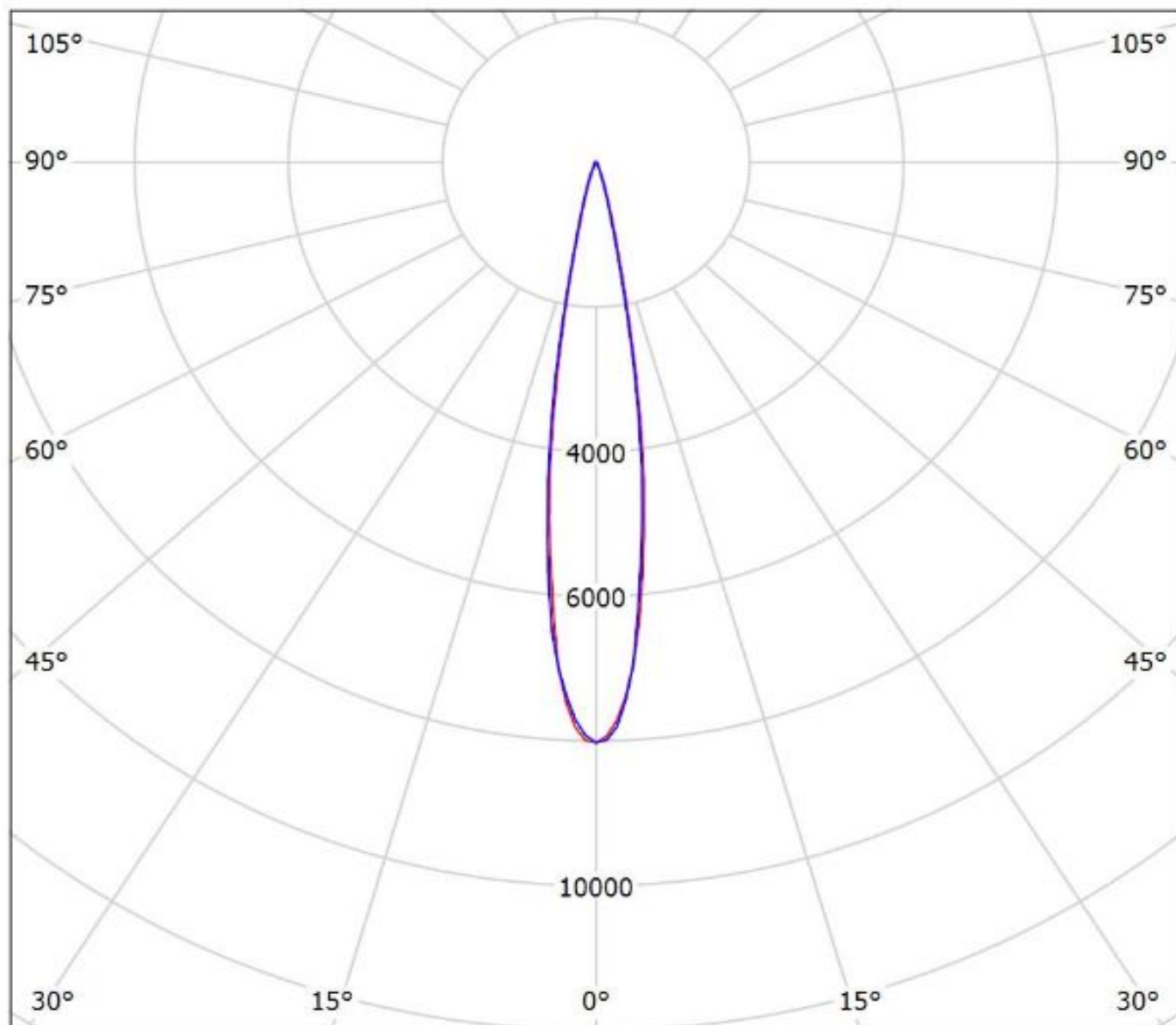


cd/klm
— C0 - C180 — C90 - C270

$\eta = 93\%$

Luminaire: Ledil C14541_HB-2X2-RS_(LH351B)

Lamps: 1 x Samsung_LH351B_2x2_444.178lm@250mA_P=2.8535W_I=0.25A



cd/klm

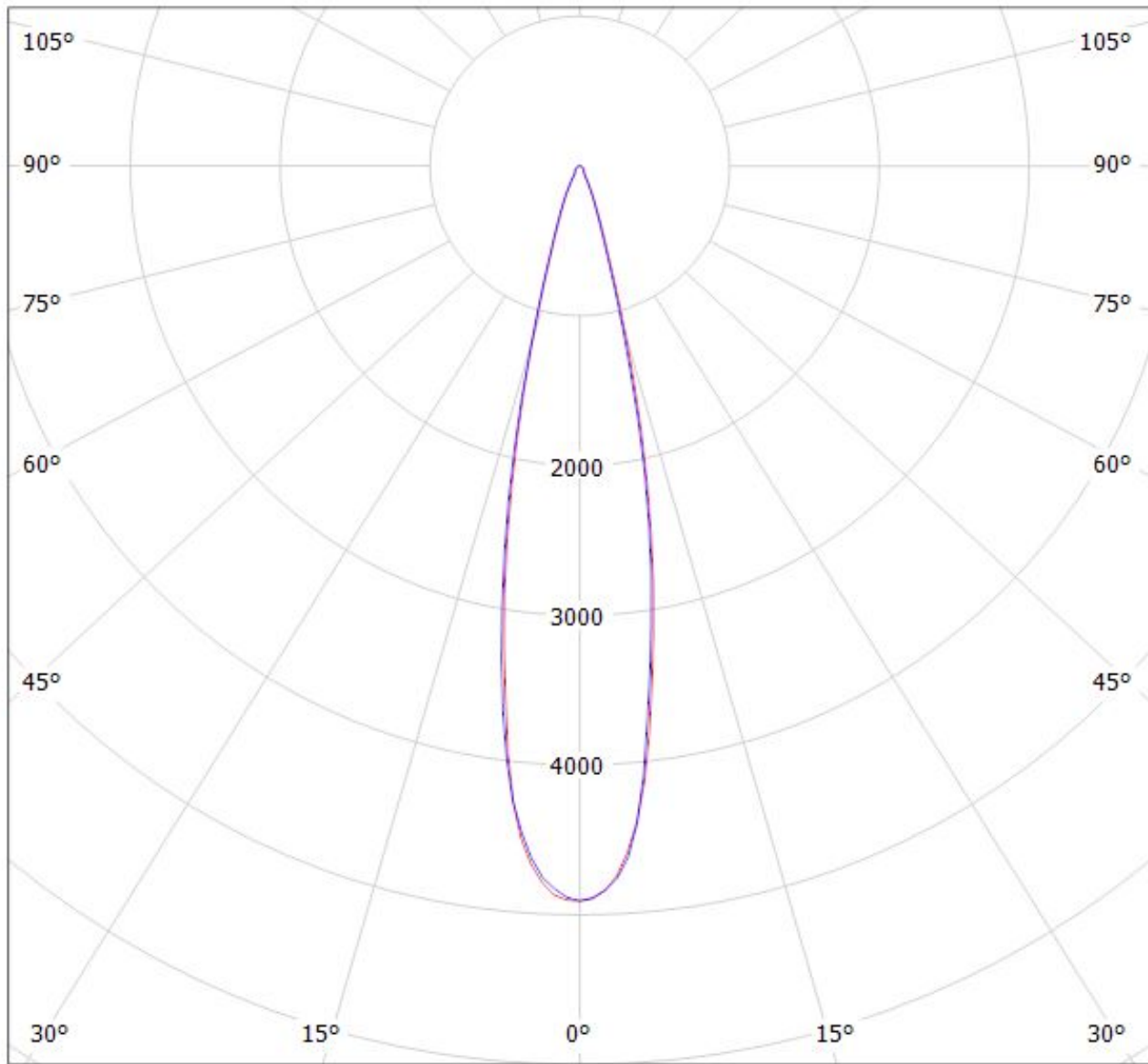
— C0 - C180

— C90 - C270

$\eta = 89\%$

Luminaire: LEDiL Oy C14541_HB-2X2-RS_(LH351D)

Lamps: 1 x Samsung_LH351D_524.264lm@250mA_P=2.7523W_I=0.250A



cd/klm

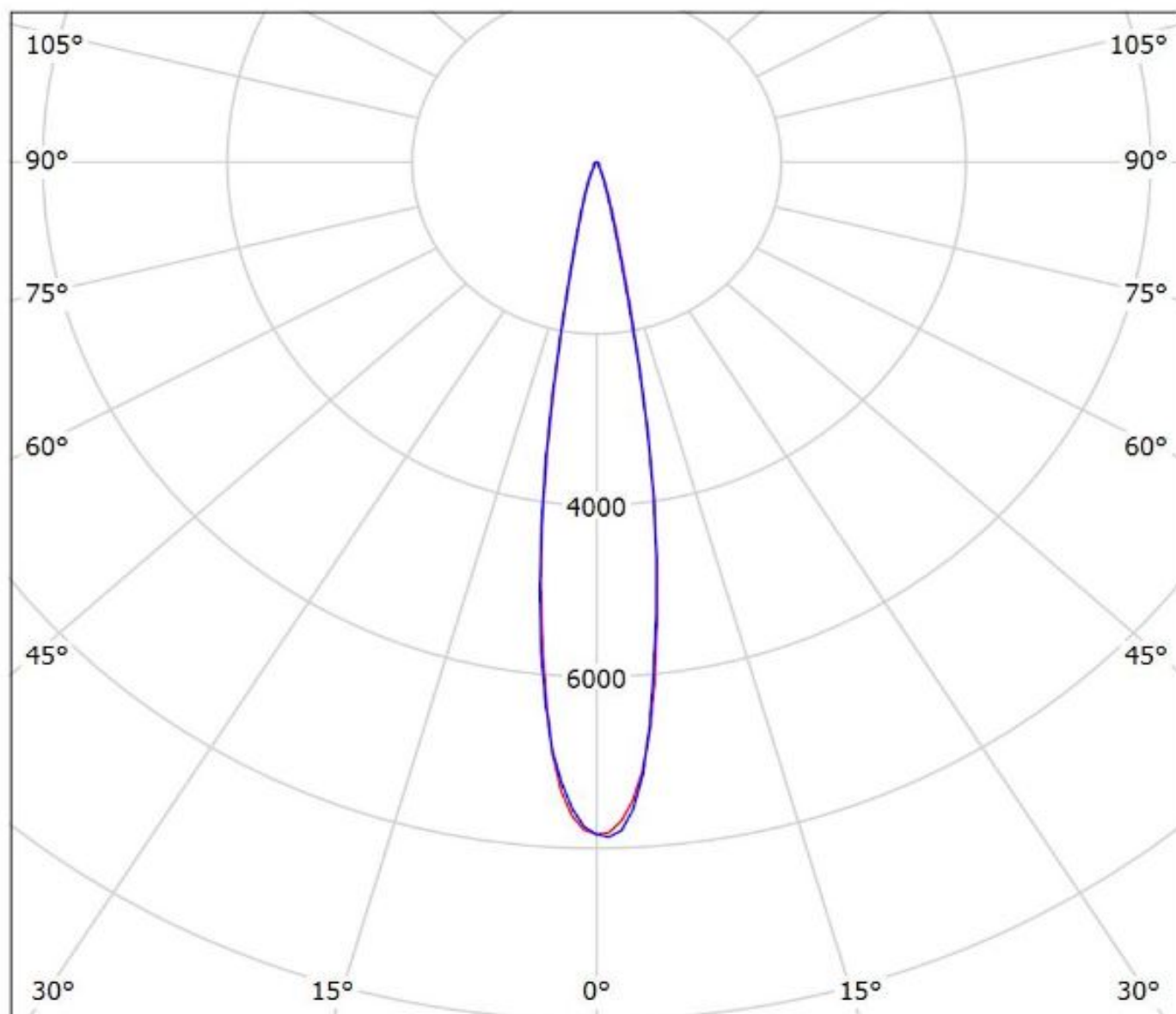
— C0 - C180

— C90 - C270

$\eta = 96\%$

Luminaire: Ledil C14541_HB-2X2-RS_(LH351C)

Lamps: 1 x Samsung_LH351C_518.223lm@250mA_P=2.85225W_I=0.25A



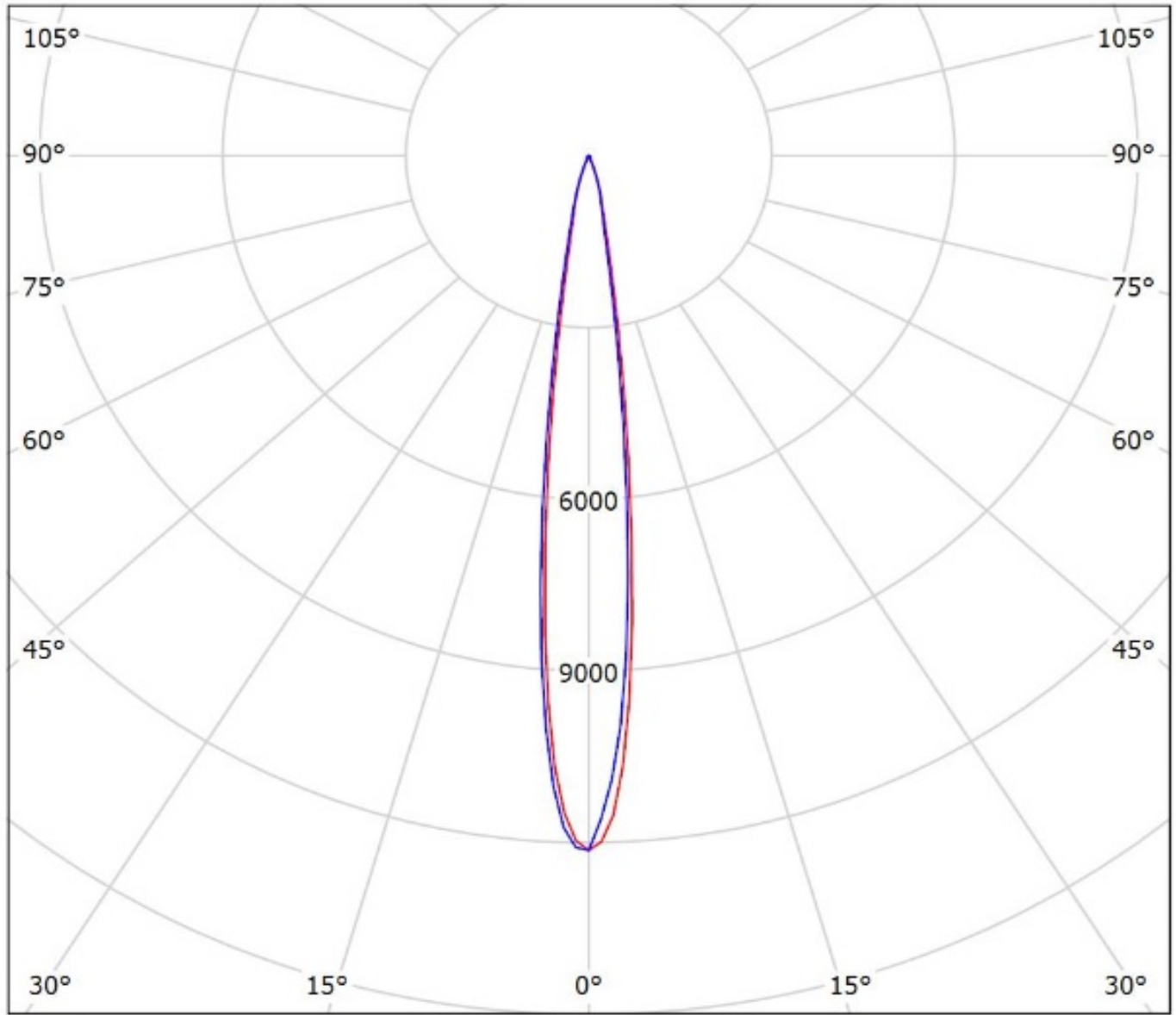
cd/klm

— C0 - C180

— C90 - C270

$\eta = 95\%$

Luminaire: Ledil Oy C14541_HB-2X2-RS_(Z5M2)_SIMULATED
Lamps: 1 x Seoul Z5M2 (SZ5-M2-W0-00)



cd/klm

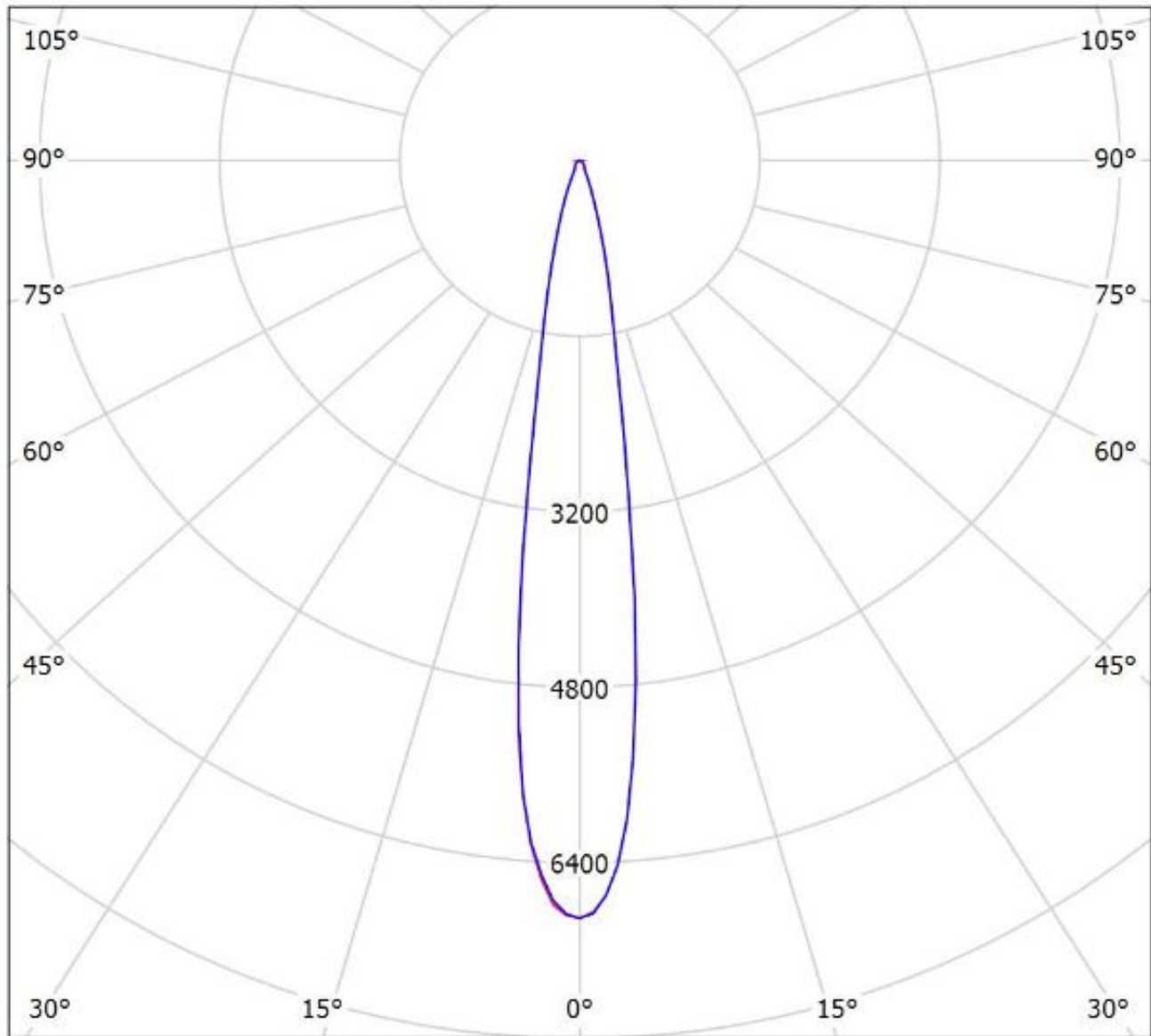
— C0 - C180

— C90 - C270

$\eta = 92\%$

Luminaire: Ledil C14541_HB-2X2-RS_(Z8Y22plus)

Lamps: 1 x Seoul_Z8Y22plus_(W6E2G)_513.996lm@250mA_P=2.754W_I=0.250A



cd/klm

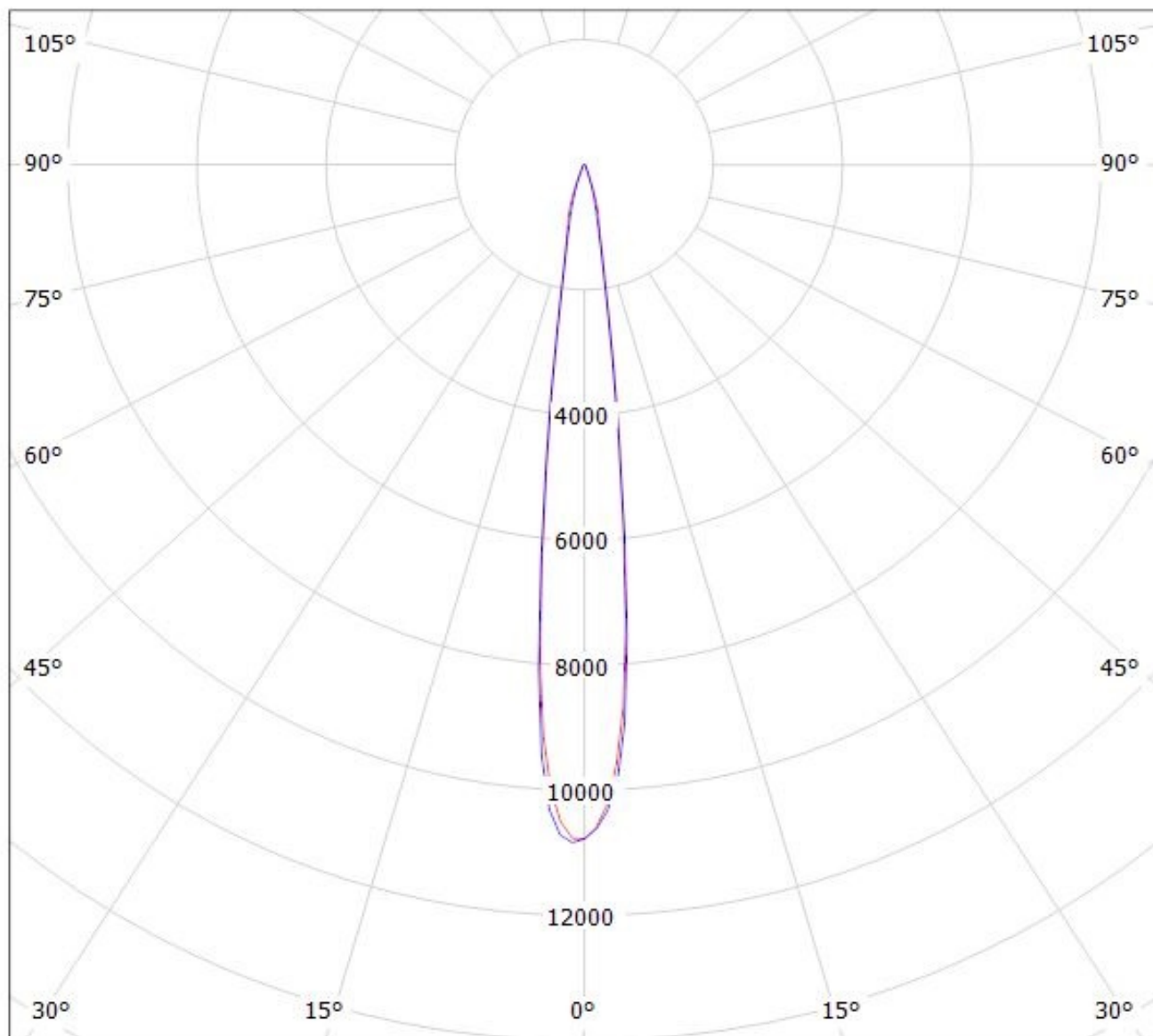
— C0 - C180

— C90 - C270

$\eta = 93\%$

Luminaire: LEDiL Oy C14541_HB-2X2-RS_(Tridonic_Module_RLE_G1)

Lamps: 1 x Tridonic_Module_RLE_G1_4594.42lm@700mA_P=32.1515W_I=0.700A



cd/klm

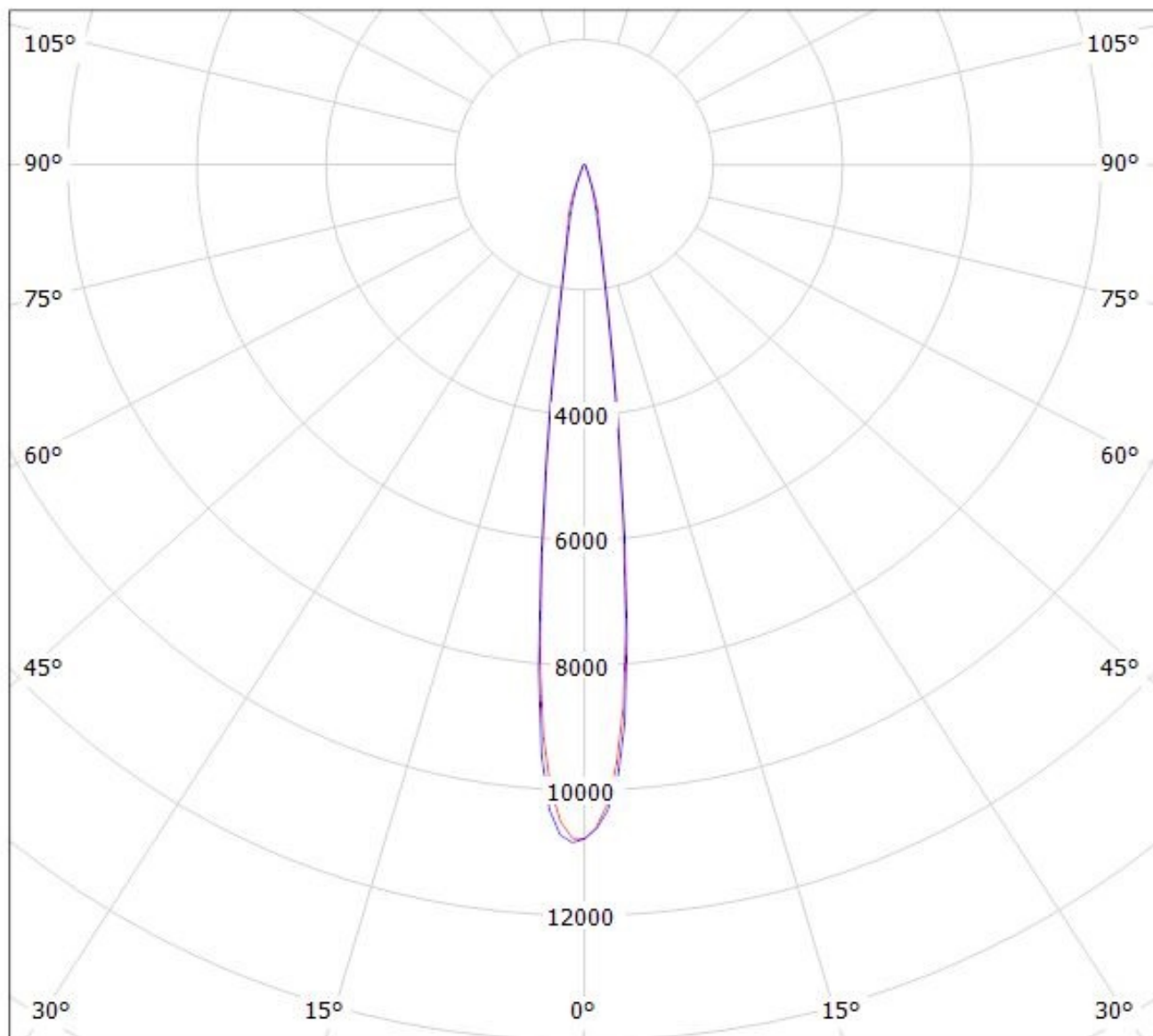
— C0 - C180

— C90 - C270

$\eta = 94\%$

Luminaire: LEDiL Oy C14541_HB-2X2-RS_(Tridonic_Module_RLE_G1)

Lamps: 1 x Tridonic_Module_RLE_G1_4594.42lm@700mA_P=32.1515W_I=0.700A



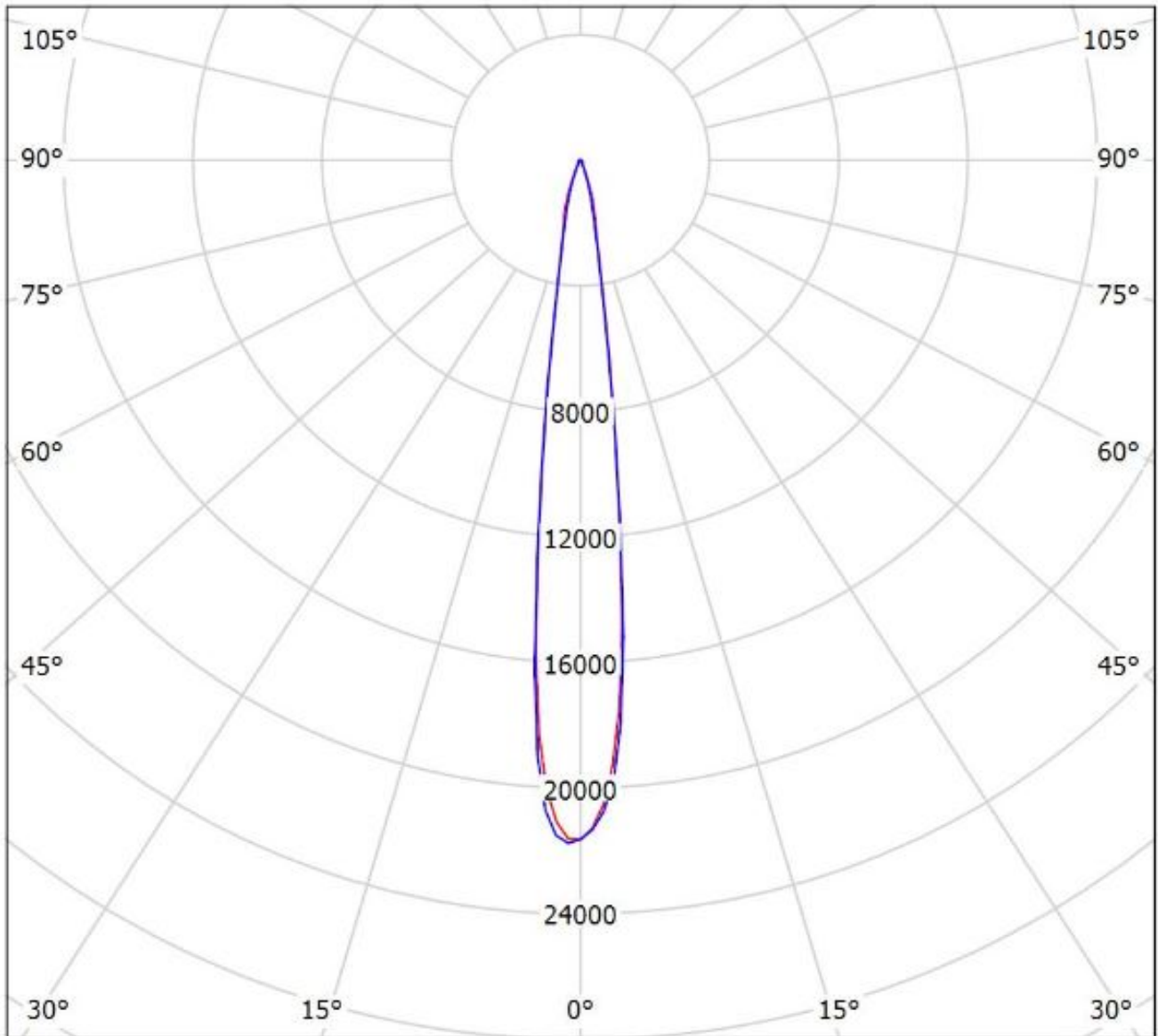
cd/klm

— C0 - C180

— C90 - C270

$\eta = 94\%$

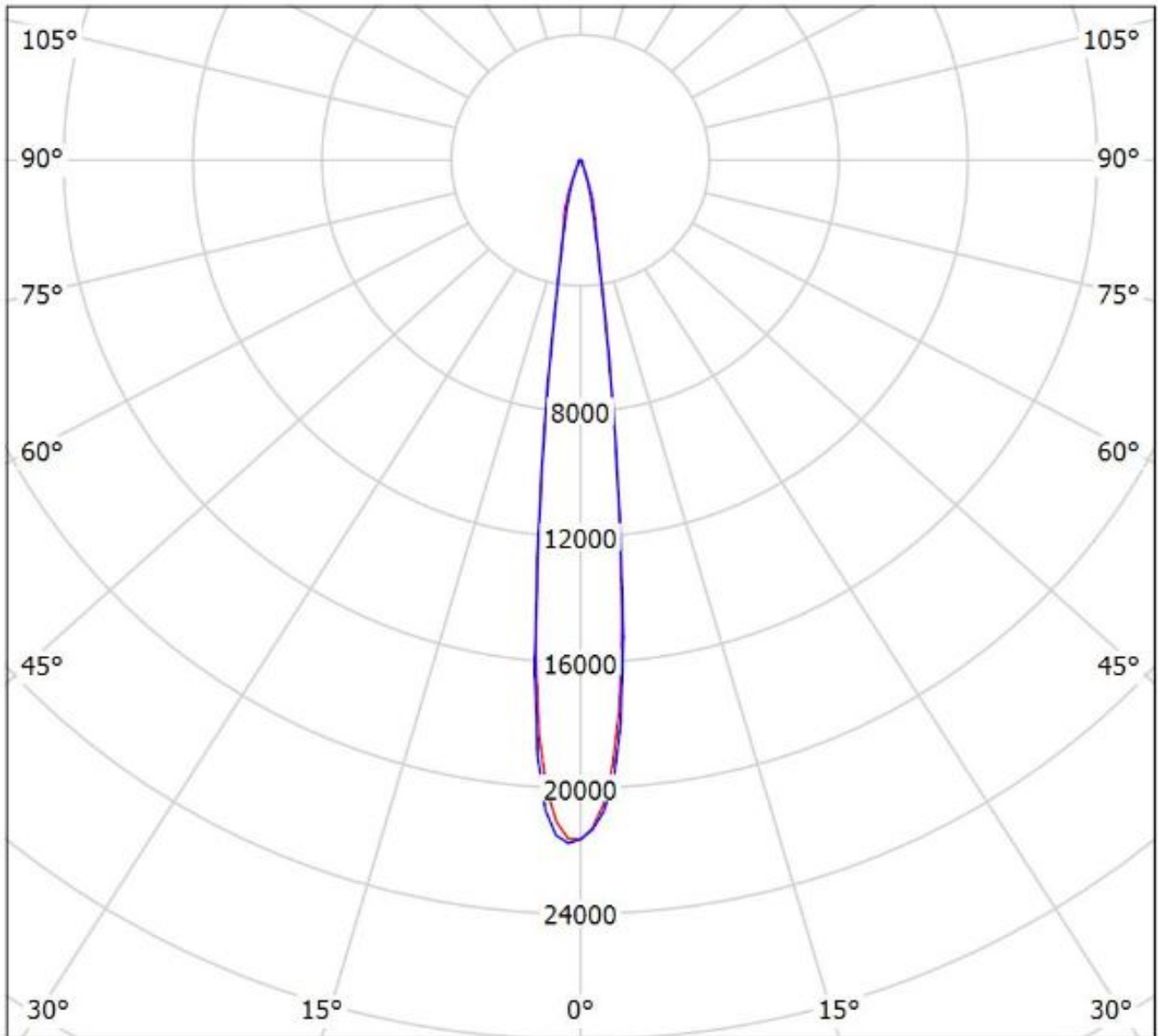
Luminaire: LEDiL Oy C14541_HB-2X2-RS_(Tridonic_Module_RLE_G1)
Lamps: 1 x Tridonic_Module_RLE_G1_2288lm@700mA_P=16W_I=0.700A



cd/klm
— C0 - C180 — C90 - C270

$\eta = 191\%$

Luminaire: LEDiL Oy C14541_HB-2X2-RS_(Tridonic_Module_RLE_G1)
Lamps: 1 x Tridonic_Module_RLE_G1_2288lm@700mA_P=16W_I=0.700A



cd/klm
— C0 - C180 — C90 - C270

$\eta = 191\%$

NOTE: The typical divergence will be changed by different color, chip size and chip position tolerance. The typical total divergence is the full angle measured where the luminous intensity is half of the peak value.