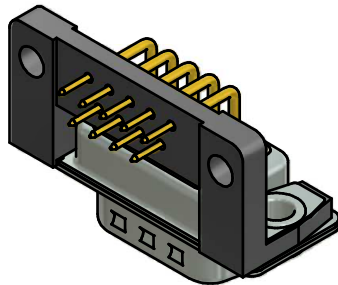


SEE NOTE 10



NOTES:

- FOR WAVESOLDERING (SOLDER BATH TEMPERATURE 260°C FOR 5 SEC. AND SOLDER PREHEAT 100°C FOR 30 SEC.)
- METALSHELLS: STEEL; min. 315µin TIN over 40-80µin NICKEL
- INSULATOR: HIGH TEMPERATURE PLASTIC UL 94 V-0, BLACK
- CONTACTS: COPPER ALLOY, PLATING:
 - PLEASE ADD A for GOLD FLASH over NICKEL (PREFERRED TYPE)
 - PLEASE ADD B for 20µin HARD GOLD over min. 50µin NICKEL
 - PLEASE ADD C for 30µin HARD GOLD over min. 50µin NICKEL
 CONTACT TAILS PRETINNED
- MOUNTING BRACKET: HIGH TEMPERATURE PLASTIC UL 94 V-0; BLACK
- RIVETED INSERTS: COPPER ALLOY; min. 200µin TIN over 80µin NICKEL
- GROUNDING BRACKETS: COPPER ALLOY; TIN PLATED
- CAPACITANCE: 370pF±20%
- DIELECTRIC WITHSTANDING VOLTAGE: 424 VDC
- CONNECTOR IS PART MARKED: 241□10970X CONEC ABC (see note 3)

Directive 2002/95/EC RoHS compliant

THIS DRAWING MAY NOT BE COPIED OR REPRODUCED IN ANY WAY, AND MAY NOT BE PASSED ON TO A THIRD PARTY WITHOUT WRITTEN PERMISSION. OWNERSHIP AND COPYRIGHT OF CONEC GmbH DO NOT ALTER CAD DRAWING BY HAND	tolerance		dim. in mm	scale: 2:1 (5:1)		
				material: SEE NOTES		
	drawn	04.09.2014	Heinrich	title: D-SUB FILTER MALE 90° 9pos. SOLDER PIN ANGLED 0.370inch through hole, mounting bracket, grounding bracket		
	appd.	04.09.2014	Lehmenkühler			
norm			dwg no:			
d-old			24K1A1547 part no: 241□10970X (see note 3)			
a	Original					
rev.	description	date				name